



MLS 7072857 Lake Home

\$4,500,000

2,646 sq ft
6 bedrooms
4 baths

22558 Senns Beach Drive
Detroit Lakes MN 56501

Waterfront: Pelican

Status: Active

Description:

Pelican Lake - Major Real Estate. 225' level frontage, 1.47ACRES, 63,000 ft.² of gorgeous lake shore. Key elements for the trained eye are found here, and they set the pace for an offering where the composition is in a class by itself. Huge level frontage, the most ideal grade, park-like grounds, tremendous depth to the lot and a dead-end location found in the sweetheart of all lake neighborhoods. Seven parcels, which include 3 lake front lots. Two cottages on the property, each approx 1,300 ft.² and mid-1920's vintage; beautifully kept/updated. One detached garage (2019), 28'x32' & 9' door for larger boats, etc. North Shore, nostalgic and beloved, Senns Beach lends prolific hard sand lake bottom. 600 ft.² stamped concrete patio by the water's edge; frontage is partial walk-in sand and partial rip-rap. The entire property has UGSS, sand point well (X2), drainfield/holding tank, two docks included. Property should be walked to be fully appreciated. Sold as one piece, the new Buyer could: have immediate use with extended family as it currently exists, split property or build new. 911 addresses also included: 22548 Senns & 22540 Senns. Short term CFD available.

Additional Details:

Year Built	1926
Lot Acres	1.47
Lot Dimensions	225 x irr.
Garage Stalls	2
School District	2889
Taxes	\$16,620
Taxes with Assessments	\$16,620
Tax Year	2025

Additional Features:

Basement: None **Fuel:** Electric **Garage:** 2 **Heat:** Baseboard **Sewer:** Private Sewer, Tank with Drainage Field **Water:** Private, Sand Point **Air Conditioning:** Wall Unit(s)

Driving Directions:

Co 20 to 225th Ave, south to bottom of hill, left/east to signs/dead-end.



Listed By:
Counselor Realty Detroit Lakes

Affinity Real Estate Inc. participates in the Regional Multiple Listing Service of Minnesota, Inc Broker Reciprocity (sm) program, allowing us to display other broker's listings on our website. All properties are subject to prior sale, change or withdrawal.



Call Affinity Real Estate

218-237-3333

info@affinityrealestate.com



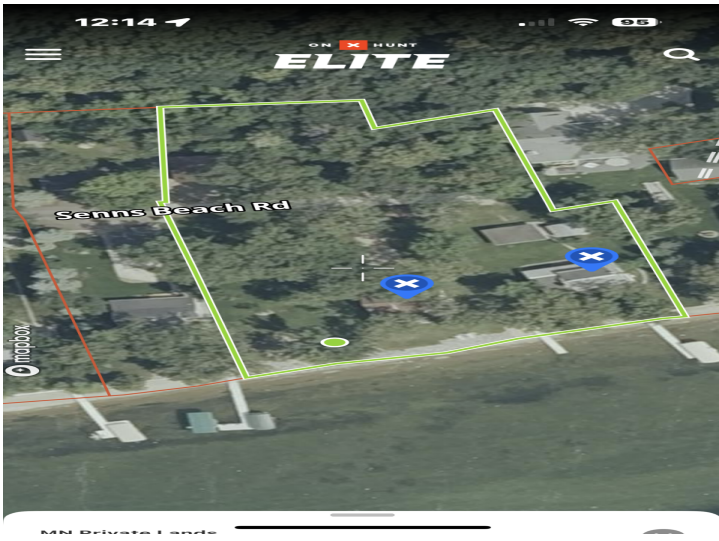
Affinity Real Estate - 600 Park Avenue South - Park Rapids MN 56470



website: www.AffinityRealEstate.com | email: info@affinityrealestate.com | office: 218-237-3333 | fax:218-237-3377



\$4,500,000
MLS 7072857 Lake Home
22558 Senns Beach Drive
Detroit Lakes MN 56501



website: www.AffinityRealEstate.com | email: info@affinityrealestate.com | office: 218-237-3333 | fax: 218-237-3377



\$4,500,000

MLS 7072857 Lake Home
22558 Senns Beach Drive
Detroit Lakes MN 56501



website: www.AffinityRealEstate.com | email: info@affinityrealestate.com | office: 218-237-3333 | fax: 218-237-3377

Affinity
REAL ESTATE INC

\$4,500,000
MLS 7072857 Lake Home
22558 Senns Beach Drive
Detroit Lakes MN 56501



website: www.AffinityRealEstate.com | email: info@affinityrealestate.com | office: 218-237-3333 | fax:218-237-3377

Affinity
REAL ESTATE INC

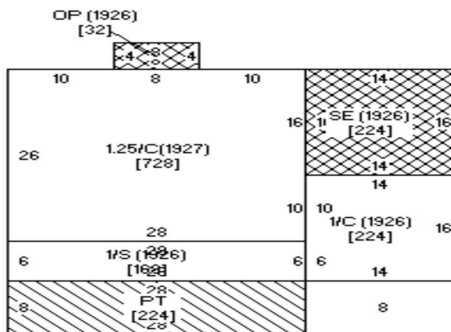
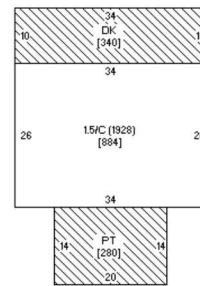
\$4,500,000
MLS 7072857 Lake Home
22558 Senns Beach Drive
Detroit Lakes MN 56501



website: www.AffinityRealEstate.com | email: info@affinityrealestate.com | office: 218-237-3333 | fax:218-237-3377



\$4,500,000
MLS 7072857 Lake Home
22558 Senns Beach Drive
Detroit Lakes MN 56501



website: www.AffinityRealEstate.com | email: info@affinityrealestate.com | office: 218-237-3333 | fax: 218-237-3377



\$4,500,000
 MLS 7072857 Lake Home
 22558 Senns Beach Drive
 Detroit Lakes MN 56501