



MLS 7073220 Lake Home

**\$585,000**

2,656 sq ft  
4 bedrooms  
2 baths

11415 Abby Lane  
Alexandria MN 56308

Waterfront: Ida

Status: Active

**Description:**

From the moment you arrive, the pace slows, the air feels calmer and the water begins to sparkle. Set on 100 feet of shoreline along prestigious Lake Ida, this warm and welcoming 4 bed, 2 bath, 2 stall heated garage log-sided home captures the perfect balance of rustic cabin charm and everyday comfort. Tucked away on a peaceful road shared by only two neighboring homes, the setting feels wonderfully private while still placing you just minutes from everything Alexandria is loved for - restaurants, wineries, theatre, boutique shopping, fishing, and endless recreation. Sunlight pours through the main level windows, filling the spacious kitchen and living areas with natural light and panoramic lake views. Thoughtfully designed with a comfortable 2-bedroom, 1-bath layout on the main level, the home centers around an inviting kitchen and living space anchored by a cozy fireplace. The lower-level family room features a cozy retreat-like feel for movie nights, game days, or guests returning from a day on the water. Two additional bedrooms and a second bath provide flexibility for hosting family and friends with ease. Completing the property is a spacious two-stall attached heated garage perfect for year-round convenience. Outside, lake life truly begins at your doorstep. Spend your days fishing, boating, swimming, or simply enjoying the peaceful beauty of Lake Ida's pristine waters. The additional lot and impressive 20x16 mezzanine storage shed offers exceptional space for lake toys, hobbies, and all the extras that come with making memories at the lake. This is more than a home, it's a place where summers feel longer, sunsets feel brighter, and memories are waiting to be made. Whether you're searching for a year-round residence or the ultimate weekend retreat, this Lake Ida opportunity invites you to experience the lifestyle so many are searching for.

**Additional Details:**

Year Built	1972
Lot Acres	0.76
Lot Dimensions	101x328x101x328
Garage Stalls	2
School District	206
Taxes	\$3,695
Taxes with Assessments	\$4,104
Tax Year	2026

**Additional Features:**

Exterior Window(s), Finished, Full, Storage Space **Fuel:** Propane, Gas, and 2 **Heat:** Baseboard, Boiler, Fireplace(s), Gravity, Hot  
Water: Drilled, Private, Well **Appliances:** Dishwasher, Full Kitchen  
City Sewer/Connected **Water:** Drilled, Private, Well **Appliances:** Dishwasher, Full Kitchen

**Driving Real Estate** Inc. participates in the Regional Multiple Listing Service of Minnesota, Inc. Broker Reciprocity (sm) program, allowing us to display other broker's listings on our website. All properties are subject to prior sale, change or withdrawal.



**Call Affinity Real Estate**

**218-237-3333**

**info@affinityrealestate.com**



**Affinity Real Estate - 600 Park Avenue South - Park Rapids MN 56470**



website: [www.AffinityRealEstate.com](http://www.AffinityRealEstate.com) | email: [info@affinityrealestate.com](mailto:info@affinityrealestate.com) | office: 218-237-3333 | fax: 218-237-3377



**\$585,000**  
MLS 7073220 Lake Home  
11415 Abby Lane  
Alexandria MN 56308



website: [www.AffinityRealEstate.com](http://www.AffinityRealEstate.com) | email: [info@affinityrealestate.com](mailto:info@affinityrealestate.com) | office: 218-237-3333 | fax:218-237-3377



**\$585,000**  
MLS 7073220 Lake Home  
11415 Abby Lane  
Alexandria MN 56308



website: [www.AffinityRealEstate.com](http://www.AffinityRealEstate.com) | email: [info@affinityrealestate.com](mailto:info@affinityrealestate.com) | office: 218-237-3333 | fax:218-237-3377



**\$585,000**  
MLS 7073220 Lake Home  
11415 Abby Lane  
Alexandria MN 56308



website: [www.AffinityRealEstate.com](http://www.AffinityRealEstate.com) | email: [info@affinityrealestate.com](mailto:info@affinityrealestate.com) | office: 218-237-3333 | fax:218-237-3377



**\$585,000**  
MLS 7073220 Lake Home  
11415 Abby Lane  
Alexandria MN 56308



website: [www.AffinityRealEstate.com](http://www.AffinityRealEstate.com) | email: [info@affinityrealestate.com](mailto:info@affinityrealestate.com) | office: 218-237-3333 | fax:218-237-3377



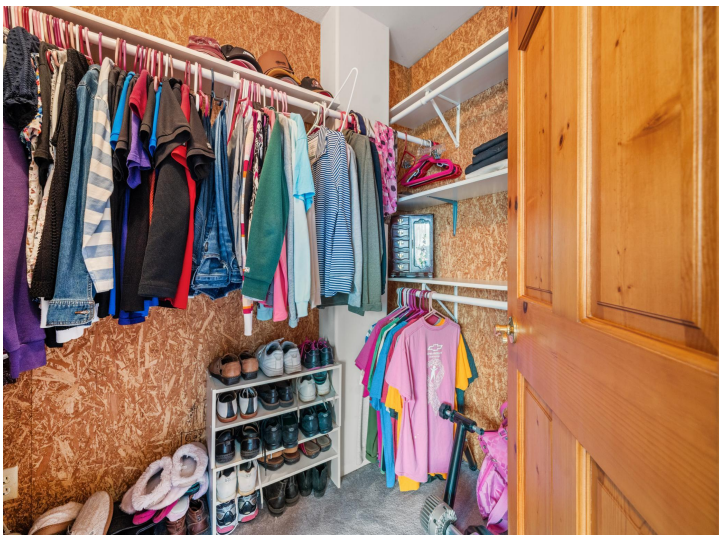
**\$585,000**  
MLS 7073220 Lake Home  
11415 Abby Lane  
Alexandria MN 56308



website: [www.AffinityRealEstate.com](http://www.AffinityRealEstate.com) | email: [info@affinityrealestate.com](mailto:info@affinityrealestate.com) | office: 218-237-3333 | fax: 218-237-3377

**Affinity**  
REAL ESTATE INC

**\$585,000**  
MLS 7073220 Lake Home  
11415 Abby Lane  
Alexandria MN 56308



website: [www.AffinityRealEstate.com](http://www.AffinityRealEstate.com) | email: [info@affinityrealestate.com](mailto:info@affinityrealestate.com) | office: 218-237-3333 | fax: 218-237-3377

**Affinity**  
REAL ESTATE INC

**\$585,000**  
MLS 7073220 Lake Home  
11415 Abby Lane  
Alexandria MN 56308



website: [www.AffinityRealEstate.com](http://www.AffinityRealEstate.com) | email: [info@affinityrealestate.com](mailto:info@affinityrealestate.com) | office: 218-237-3333 | fax:218-237-3377

**Affinity**  
REAL ESTATE INC

**\$585,000**  
MLS 7073220 Lake Home  
11415 Abby Lane  
Alexandria MN 56308



website: [www.AffinityRealEstate.com](http://www.AffinityRealEstate.com) | email: [info@affinityrealestate.com](mailto:info@affinityrealestate.com) | office: 218-237-3333 | fax:218-237-3377

**Affinity**  
REAL ESTATE INC

**\$585,000**  
MLS 7073220 Lake Home  
11415 Abby Lane  
Alexandria MN 56308



website: [www.AffinityRealEstate.com](http://www.AffinityRealEstate.com) | email: [info@affinityrealestate.com](mailto:info@affinityrealestate.com) | office: 218-237-3333 | fax:218-237-3377



**\$585,000**  
MLS 7073220 Lake Home  
11415 Abby Lane  
Alexandria MN 56308