



MLS 7073416 Lake Home

\$775,000

1,283 sq ft
2 bedrooms
2 baths

1393 East Pointe Drive
Brainerd MN 56401

Waterfront: Gull

Status: Active

Description:

Experience Maintenance-Free lake living at its finest in this beautifully appointed 2-bedroom, 2-bath home located in Gull Lake's sought-after East Pointe Townhome community. You will love the open concept design with soaring cathedral ceilings and a floor-to-ceiling stone fireplace. Enjoy stunning sunset views and warm summer breezes from the lakeside 3-season porch featuring a recently installed Weather Master Window System. The lakeside primary bedroom suite offers a full private bath and panoramic lake views. An attached garage and an additional 30x16 detached garage provide ample space for all your storage needs. This unit is situated in one of the most desired locations in the community, with end-of-the-street privacy and just steps away from your boat slip and the lake. Meticulously maintained association amenities include a private boat slip, sugar sand swimming beach, a heated pool, tennis/pickleball courts, a children's playground, and an owner's clubhouse. Conveniently located near championship golf, popular dining, scenic biking trails, and world-class resorts. Whether you're looking for a weekend escape or a year-round lake home, this property has you covered.

Additional Details:

Year Built	1986
Lot Acres	30.5
Lot Dimensions	1400x885x1130x1190
Garage Stalls	3
School District	181
Taxes	\$4,682
Taxes with Assessments	\$4,768
Tax Year	2026

Additional Features:

Fuel: Natural Gas **Heat:** Forced Air

Driving Directions:

FROM THE STOPLIGHTS AT THE JCT. OF 77 & 371 (DONDELINGERS), GO WEST ON 77 FOR 4.9 MILES, THEN RIGHT ON EAST POINTE DR. FOR 0.4 MILES, STAYING LEFT TO SIGN & FIRE #1393 ON THE RIGHT.



Listed By:
Kurilla Real Estate LTD

Affinity Real Estate Inc. participates in the Regional Multiple Listing Service of Minnesota, Inc Broker Reciprocity (sm) program, allowing us to display other broker's listings on our website. All properties are subject to prior sale, change or withdrawal.



Call Affinity Real Estate

218-237-3333

info@affinityrealestate.com



Affinity Real Estate - 600 Park Avenue South - Park Rapids MN 56470



website: www.AffinityRealEstate.com | email: info@affinityrealestate.com | office: 218-237-3333 | fax: 218-237-3377

Affinity
REAL ESTATE INC

\$775,000
MLS 7073416 Lake Home
1393 East Pointe Drive
Brainerd MN 56401



website: www.AffinityRealEstate.com | email: info@affinityrealestate.com | office: 218-237-3333 | fax:218-237-3377

Affinity
REAL ESTATE INC

\$775,000
MLS 7073416 Lake Home
1393 East Pointe Drive
Brainerd MN 56401



website: www.AffinityRealEstate.com | email: info@affinityrealestate.com | office: 218-237-3333 | fax:218-237-3377



\$775,000
MLS 7073416 Lake Home
1393 East Pointe Drive
Brainerd MN 56401



website: www.AffinityRealEstate.com | email: info@affinityrealestate.com | office: 218-237-3333 | fax:218-237-3377

Affinity
REAL ESTATE INC

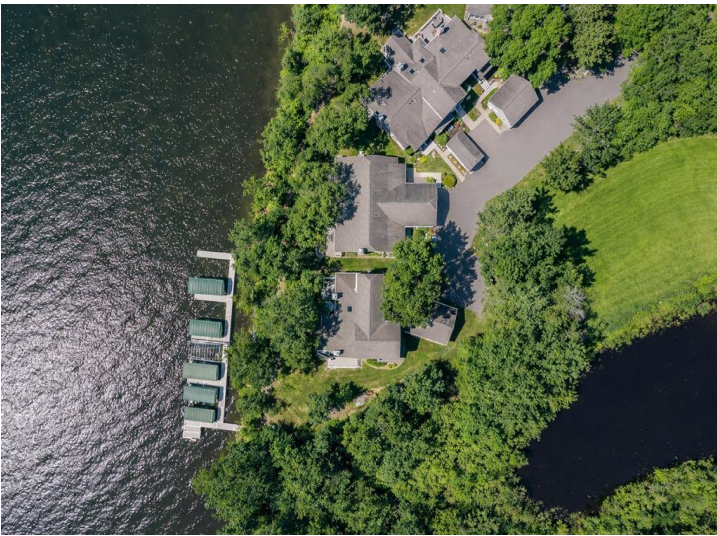
\$775,000
MLS 7073416 Lake Home
1393 East Pointe Drive
Brainerd MN 56401



website: www.AffinityRealEstate.com | email: info@affinityrealestate.com | office: 218-237-3333 | fax:218-237-3377

Affinity
REAL ESTATE INC

\$775,000
MLS 7073416 Lake Home
1393 East Pointe Drive
Brainerd MN 56401



website: www.AffinityRealEstate.com | email: info@affinityrealestate.com | office: 218-237-3333 | fax:218-237-3377



\$775,000
MLS 7073416 Lake Home
1393 East Pointe Drive
Brainerd MN 56401



website: www.AffinityRealEstate.com | email: info@affinityrealestate.com | office: 218-237-3333 | fax:218-237-3377

Affinity
REAL ESTATE INC

\$775,000
MLS 7073416 Lake Home
1393 East Pointe Drive
Brainerd MN 56401