



MLS 7073465 Lake Land

\$85,000

Description:

Current Owners Park off County Rd 14, in the Grass & Use the Walking Trail to the River & Camping Sites. Could use it as the Current Owners, as a Secluded Spot for Friends & Family Camping. Walking Distance to Nimrods Parks, Restaurants, & Stores. A Driveway has not been put in to keep the "UP North" feeling while Canoeing & Kayaking the Crow Wing River. Possibilities are Endless. Realtor is Related

Additional Details:

Lot Acres	3.662
Lot Dimensions	375x616x394x353
School District	820
Taxes	\$514
Taxes with Assessments	\$514
Tax Year	2026

Additional Features:

Driving Directions:

From Nimrod go North on County Road 14 Approximately 1 mile to sign on the right.



Listed By:
Counselor Realty Brainerd Lakes

Affinity Real Estate Inc. participates in the Regional Multiple Listing Service of Minnesota, Inc Broker Reciprocity (sm) program, allowing us to display other broker's listings on our website. All properties are subject to prior sale, change or withdrawal.



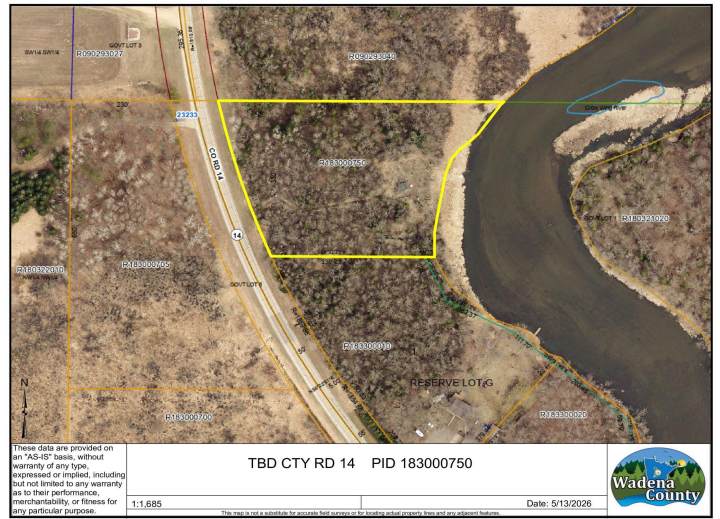
Call Affinity Real Estate

218-237-3333

info@affinityrealestate.com



Affinity Real Estate - 600 Park Avenue South - Park Rapids MN 56470



website: www.AffinityRealEstate.com | email: info@affinityrealestate.com | office: 218-237-3333 | fax:218-237-3377



\$85,000
MLS 7073465 Lake Land
TBD County Rd 14
Nimrod MN 56478



website: www.AffinityRealEstate.com | email: info@affinityrealestate.com | office: 218-237-3333 | fax:218-237-3377



\$85,000
MLS 7073465 Lake Land
TBD County Rd 14
Nimrod MN 56478



website: www.AffinityRealEstate.com | email: info@affinityrealestate.com | office: 218-237-3333 | fax:218-237-3377

Affinity
REAL ESTATE INC

\$85,000
MLS 7073465 Lake Land
TBD County Rd 14
Nimrod MN 56478



website: www.AffinityRealEstate.com | email: info@affinityrealestate.com | office: 218-237-3333 | fax:218-237-3377



\$85,000
MLS 7073465 Lake Land
TBD County Rd 14
Nimrod MN 56478