



MLS 7073597 Lake Land

**\$44,500**

**Description:**

Must-see recreational property on beautiful Sibley Lake in Pequot Lakes! Nestled among the towering pines of the Nordensua Association, this peaceful retreat offers the tranquility and up-north charm you've been searching for. You'll fall in love with the serene setting, featuring access to 350 feet of sandy shoreline and 14 stunning wooded acres to enjoy. Property includes private docks on Sibley Lake, making it easy to spend your days fishing, boating, or simply relaxing by the water.

Conveniently located just 3 hours from the MSP airport, this getaway offers the perfect balance of seclusion and accessibility. Sibley Lake spans approximately 500 acres, stretches nearly 3 miles long, and reaches depths of 40-50 feet. Known for excellent fishing, the lake is highly regarded for largemouth bass and northern pike, along with quality panfish including bluegill and crappie. Walleye are also present and periodically stocked, offering even more angling opportunities. Lots of public hunting land in the area as well as ATV trails and snowmobile trails. Come check out the beautiful Pequot Lakes area in the big woods of northern Minnesota !!

**Additional Details:**

Lot Acres	0.09
Lot Dimensions	43 x 88
School District	186
Taxes	\$516
Taxes with Assessments	\$624
Tax Year	2026

**Additional Features:**

**Driving Directions:**

From Hwy 371 just north of Pequot Lakes, turn west onto Patriot Ave. In .5 mile turn right onto County Rd 17. In a .5 mile turn left onto Nordenstua Lane and the lot is on the right.



Listed By:  
Timber Ghost Realty, LLC

Affinity Real Estate Inc. participates in the Regional Multiple Listing Service of Minnesota, Inc Broker Reciprocity (sm) program, allowing us to display other broker's listings on our website. All properties are subject to prior sale, change or withdrawal.



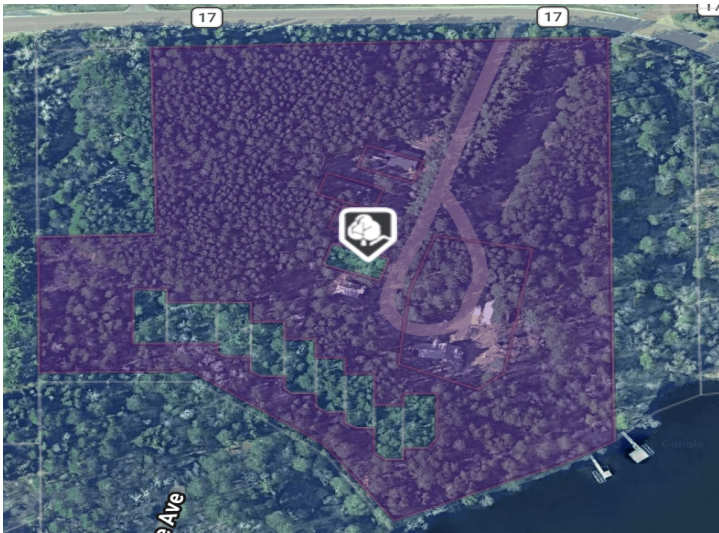
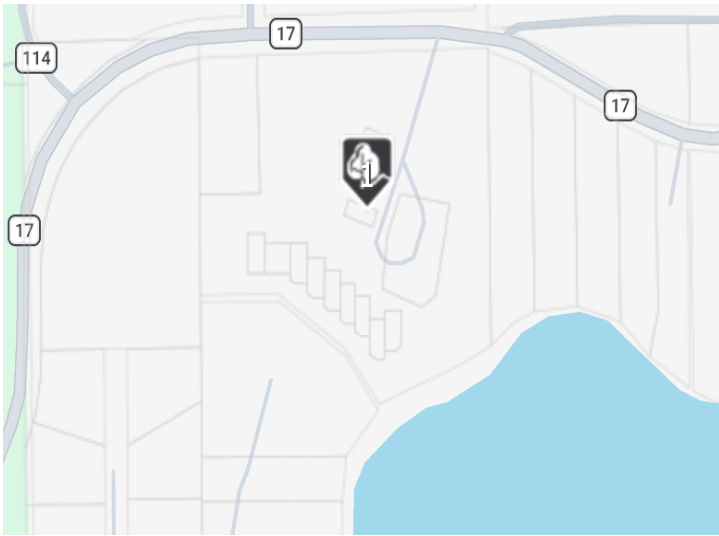
**Call Affinity Real Estate**

**218-237-3333**

**info@affinityrealestate.com**



**Affinity Real Estate - 600 Park Avenue South - Park Rapids MN 56470**



website: [www.AffinityRealEstate.com](http://www.AffinityRealEstate.com) | email: [info@affinityrealestate.com](mailto:info@affinityrealestate.com) | office: 218-237-3333 | fax: 218-237-3377



**\$44,500**  
MLS 7073597 Lake Land  
31XXX Nordenstua Lane  
Pequot Lakes MN 56472

website: [www.AffinityRealEstate.com](http://www.AffinityRealEstate.com) | email: [info@affinityrealestate.com](mailto:info@affinityrealestate.com) | office: 218-237-3333 | fax:218-237-3377



**\$44,500**

MLS 7073597 Lake Land  
31XXX Nordenstua Lane  
Pequot Lakes MN 56472

website: [www.AffinityRealEstate.com](http://www.AffinityRealEstate.com) | email: [info@affinityrealestate.com](mailto:info@affinityrealestate.com) | office: 218-237-3333 | fax:218-237-3377



**\$44,500**

MLS 7073597 Lake Land  
31XXX Nordenstua Lane  
Pequot Lakes MN 56472

website: [www.AffinityRealEstate.com](http://www.AffinityRealEstate.com) | email: [info@affinityrealestate.com](mailto:info@affinityrealestate.com) | office: 218-237-3333 | fax:218-237-3377



**\$44,500**

MLS 7073597 Lake Land  
31XXX Nordenstua Lane  
Pequot Lakes MN 56472