



MLS 7073666 Residential

\$525,000

1,504 sq ft
3 bedrooms
2 baths

8766 Dosh Lane
Fort Ripley MN 56449

Status: Coming Soon

Description:

FORT RIPLEY, MN Rare hobby farm situated on a rolling hillside overlooking 14+ acres of beautiful pasture and a red barn ready for all your livestock. This one-level home features an open floor plan with 3 bedrooms, 2 full baths, high vaulted ceilings, 6-panel doors, in-floor heat, and a cozy living room with a gas fireplace. The property also includes a 2-stall attached heated garage, plus an additional 4-stall heated garage with in-floor heat. The wonderfully landscaped yard is filled with flowers, boulders, and a garden shed.

Enjoy true country living on a quiet cul-de-sac road — all just minutes from Brainerd.

Additional Details:

Year Built	2005
Lot Acres	14.46
Lot Dimensions	915x782x741x759
Garage Stalls	6
School District	181
Taxes	\$3,002
Taxes with Assessments	\$3,002
Tax Year	2025

Additional Features:

Fuel: Electric, Propane **Heat:** Boiler, Dual Fuel/Off Peak, Fireplace(s), In-Floor Heating

Driving Directions:

Highway #371 S. to left on County Road #2, to right on County Road #122, to left on 10th Street, to right on Dosh Road, to left on Dosh Lane, to property on left.



Listed By:
LPT Realty, LLC.

Affinity Real Estate Inc. participates in the Regional Multiple Listing Service of Minnesota, Inc Broker Reciprocity (sm) program, allowing us to display other broker's listings on our website. All properties are subject to prior sale, change or withdrawal.



Call Affinity Real Estate

218-237-3333

info@affinityrealestate.com



Affinity Real Estate - 600 Park Avenue South - Park Rapids MN 56470



website: www.AffinityRealEstate.com | email: info@affinityrealestate.com | office: 218-237-3333 | fax:218-237-3377



\$525,000
MLS 7073666 Residential
8766 Dosh Lane
Fort Ripley MN 56449



website: www.AffinityRealEstate.com | email: info@affinityrealestate.com | office: 218-237-3333 | fax: 218-237-3377

Affinity
REAL ESTATE INC

\$525,000
MLS 7073666 Residential
8766 Dosh Lane
Fort Ripley MN 56449



website: www.AffinityRealEstate.com | email: info@affinityrealestate.com | office: 218-237-3333 | fax: 218-237-3377

Affinity
REAL ESTATE INC

\$525,000
MLS 7073666 Residential
8766 Dosh Lane
Fort Ripley MN 56449



website: www.AffinityRealEstate.com | email: info@affinityrealestate.com | office: 218-237-3333 | fax:218-237-3377



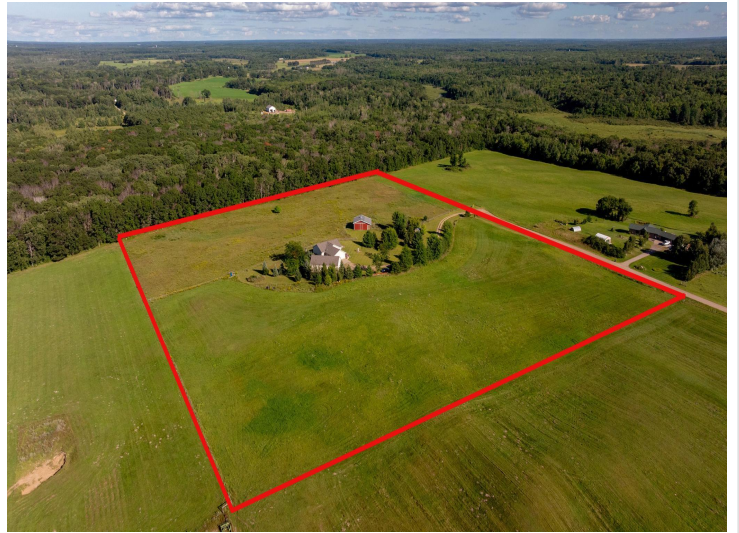
\$525,000
MLS 7073666 Residential
8766 Dosh Lane
Fort Ripley MN 56449



website: www.AffinityRealEstate.com | email: info@affinityrealestate.com | office: 218-237-3333 | fax: 218-237-3377

Affinity
REAL ESTATE INC

\$525,000
MLS 7073666 Residential
8766 Dosh Lane
Fort Ripley MN 56449



website: www.AffinityRealEstate.com | email: info@affinityrealestate.com | office: 218-237-3333 | fax:218-237-3377



\$525,000
MLS 7073666 Residential
8766 Dosh Lane
Fort Ripley MN 56449