



MLS 7073886 Land

**\$320,000**

88 Acres  
Raw Land

TBD Bear Road  
Cushing MN 56443

Status: Active

**Description:**

Discover 88 acres of premier hunting land in Cushing, perfectly positioned just one mile off U.S. Highway 10 and less than 10 miles from Lake Alexander and Fish Trap Lake. This exceptional property offers a rare combination of privacy, recreation, and accessibility.

The rolling hardwood terrain is thoughtfully set up for serious hunters and outdoor enthusiasts, featuring established trail systems, multiple deer stands, thick bedding cover, abundant natural food sources, and areas suitable for additional food plots. The property has a proven history of mature whitetail deer activity and also provides outstanding opportunities for bear, turkey, and grouse hunting.

A build site is already in place, making this property ideal for a future cabin, hunting camp, or year-round retreat. Whether you are looking for a premier recreational property, a private getaway, or a long-term land investment, this acreage offers endless potential in the heart of central Minnesota.

**Additional Details:**

Lot Acres	88
Lot Dimensions	88ac
School District	482
Taxes	\$1,208
Taxes with Assessments	\$1,208
Tax Year	2025

**Additional Features:**

**Driving Directions:**

From Cushing head east on Bear Rd, property is right after Cedar road



Listed By:  
American Legacy Land Co., LLC

Affinity Real Estate Inc. participates in the Regional Multiple Listing Service of Minnesota, Inc Broker Reciprocity (sm) program, allowing us to display other broker's listings on our website. All properties are subject to prior sale, change or withdrawal.



**Call Affinity Real Estate**

**218-237-3333**

**info@affinityrealestate.com**



**Affinity Real Estate - 600 Park Avenue South - Park Rapids MN 56470**



website: [www.AffinityRealEstate.com](http://www.AffinityRealEstate.com) | email: [info@affinityrealestate.com](mailto:info@affinityrealestate.com) | office: 218-237-3333 | fax:218-237-3377

**Affinity**  
REAL ESTATE INC

**\$320,000**  
MLS 7073886 Land  
TBD Bear Road  
Cushing MN 56443



website: [www.AffinityRealEstate.com](http://www.AffinityRealEstate.com) | email: [info@affinityrealestate.com](mailto:info@affinityrealestate.com) | office: 218-237-3333 | fax:218-237-3377



**\$320,000**  
MLS 7073886 Land  
TBD Bear Road  
Cushing MN 56443



website: [www.AffinityRealEstate.com](http://www.AffinityRealEstate.com) | email: [info@affinityrealestate.com](mailto:info@affinityrealestate.com) | office: 218-237-3333 | fax:218-237-3377

**Affinity**  
REAL ESTATE INC

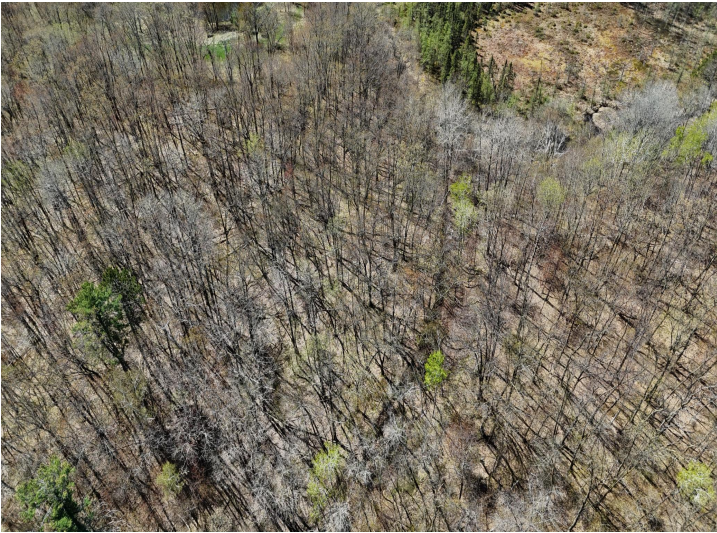
**\$320,000**  
MLS 7073886 Land  
TBD Bear Road  
Cushing MN 56443



website: [www.AffinityRealEstate.com](http://www.AffinityRealEstate.com) | email: [info@affinityrealestate.com](mailto:info@affinityrealestate.com) | office: 218-237-3333 | fax:218-237-3377

**Affinity**  
REAL ESTATE INC

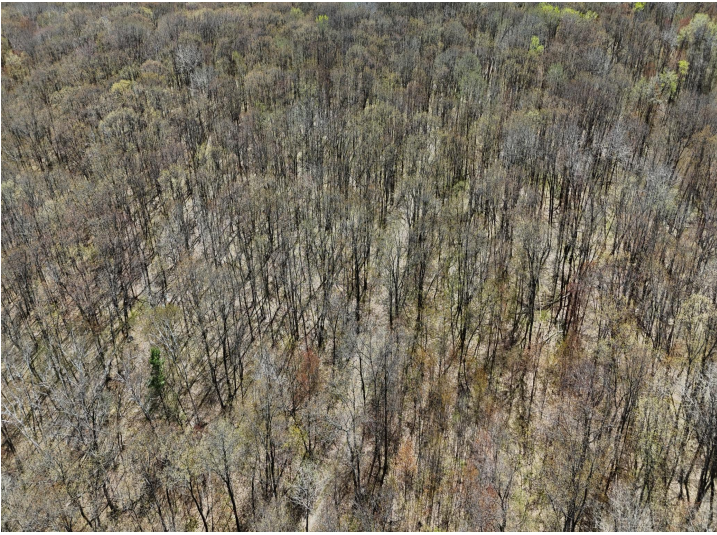
**\$320,000**  
MLS 7073886 Land  
TBD Bear Road  
Cushing MN 56443



website: [www.AffinityRealEstate.com](http://www.AffinityRealEstate.com) | email: [info@affinityrealestate.com](mailto:info@affinityrealestate.com) | office: 218-237-3333 | fax:218-237-3377

**Affinity**  
REAL ESTATE INC

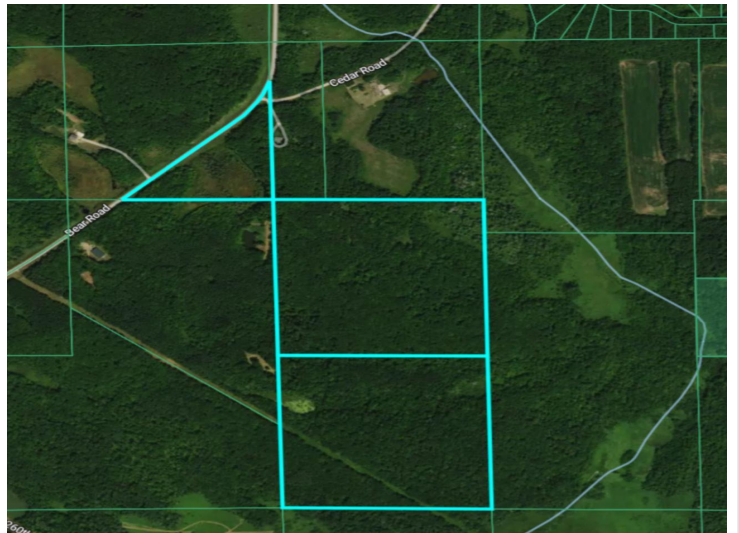
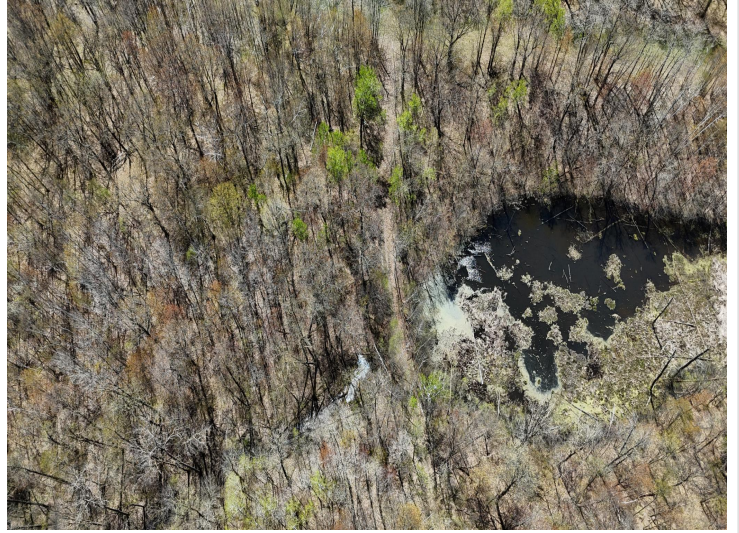
**\$320,000**  
MLS 7073886 Land  
TBD Bear Road  
Cushing MN 56443



website: [www.AffinityRealEstate.com](http://www.AffinityRealEstate.com) | email: [info@affinityrealestate.com](mailto:info@affinityrealestate.com) | office: 218-237-3333 | fax:218-237-3377



**\$320,000**  
MLS 7073886 Land  
TBD Bear Road  
Cushing MN 56443



website: [www.AffinityRealEstate.com](http://www.AffinityRealEstate.com) | email: [info@affinityrealestate.com](mailto:info@affinityrealestate.com) | office: 218-237-3333 | fax:218-237-3377



**\$320,000**  
MLS 7073886 Land  
TBD Bear Road  
Cushing MN 56443