



MLS 7073935 Residential

\$679,900

3,619 sq ft
4 bedrooms
4 baths

10719 Shore Drive
Merrifield MN 56465

Status: Coming Soon

Description:

Come see this beautiful Craftsman-style two-story home in the heart of the Lakes Area. Set on over 3 acres, this one-of-a-kind property offers 4 bedrooms, 4 bathrooms, and an ideal blend of quality, comfort, and space.

The main level features a custom kitchen with granite countertops, tile backsplash, custom cabinetry, stainless steel appliances, and a large island perfect for entertaining. The spacious living room offers beautiful wood floors, a built-in entertainment center, and a cozy gas fireplace.

Upstairs, you'll find three large bedrooms, including an impressive primary suite with a stunning private bath featuring a large tiled shower, granite finishes, and a walk-in closet. A conveniently located laundry room completes the upper level.

The lower level offers a huge recreation room, an exercise room, a second gas fireplace, ample storage, and an additional bedroom. Outside, enjoy the covered entry, large deck, firepit patio, and beautiful yard.

The property also includes a large detached shop with room for all your toys, plus plenty of parking. A truly unique Lakes Area home with space, style, and function.

Additional Details:

Year Built	2015
Lot Acres	3.1
Lot Dimensions	750x700x360
Garage Stalls	5
School District	181
Taxes	\$3,658
Taxes with Assessments	\$3,658
Tax Year	2025

Additional Features:

Basement: Full **Fuel:** Natural Gas **Garage:** 5 **Heat:** Forced Air, Fireplace(s) **Sewer:** Tank with Drainage Field **Water:** Drilled **Air Conditioning:**



Listed By:
LPT Realty, LLC.

Call Affinity Real Estate for more information on this listing. We are a member of the Multiple Listing Service of Minnesota, Inc Broker Reciprocity (sm) program, allowing us to display other broker's listings on our website. All properties are subject to prior sale, change or withdrawal.



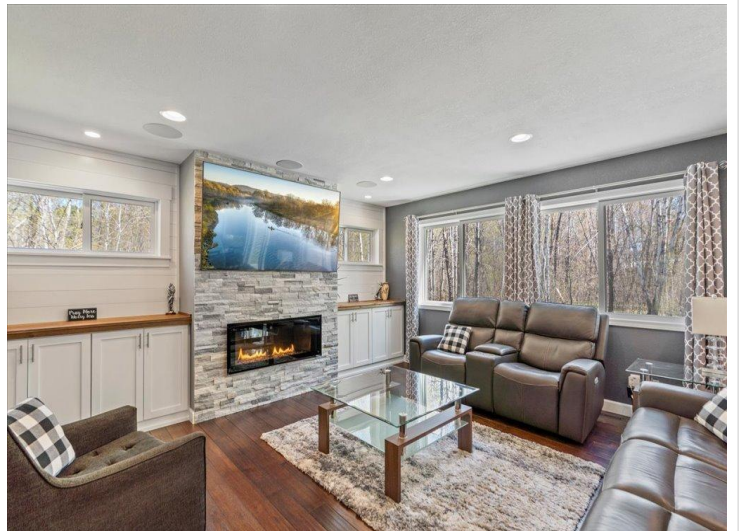
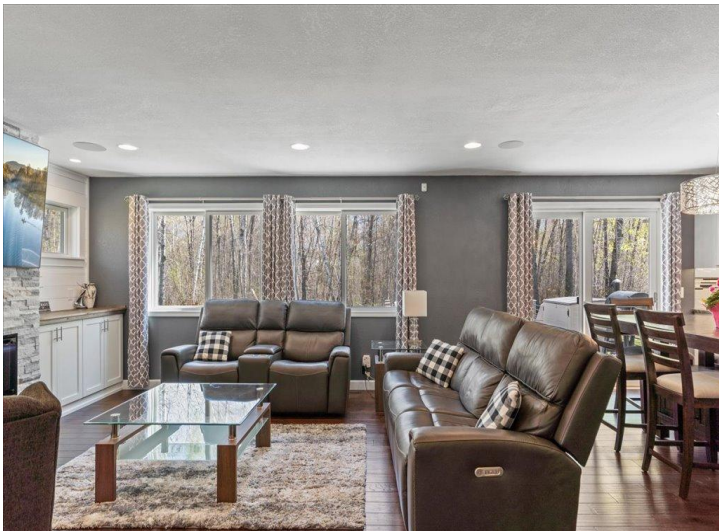
Call Affinity Real Estate

218-237-3333

info@affinityrealestate.com



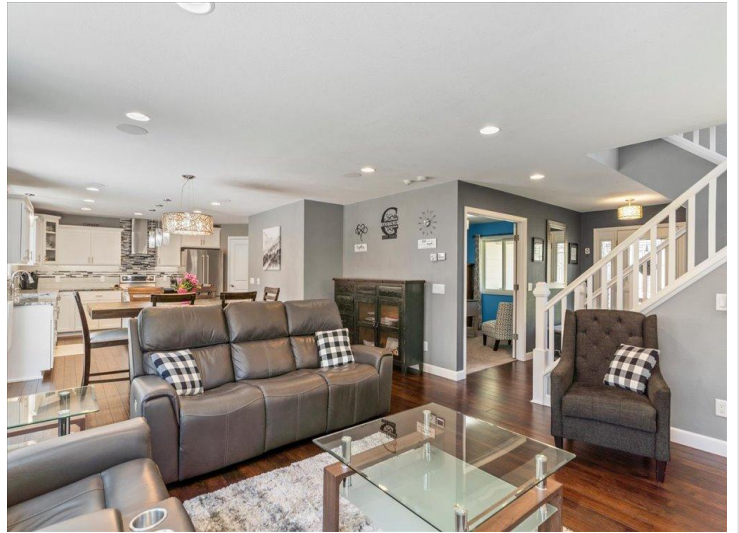
Affinity Real Estate - 600 Park Avenue South - Park Rapids MN 56470



website: www.AffinityRealEstate.com | email: info@affinityrealestate.com | office: 218-237-3333 | fax: 218-237-3377

Affinity
REAL ESTATE INC

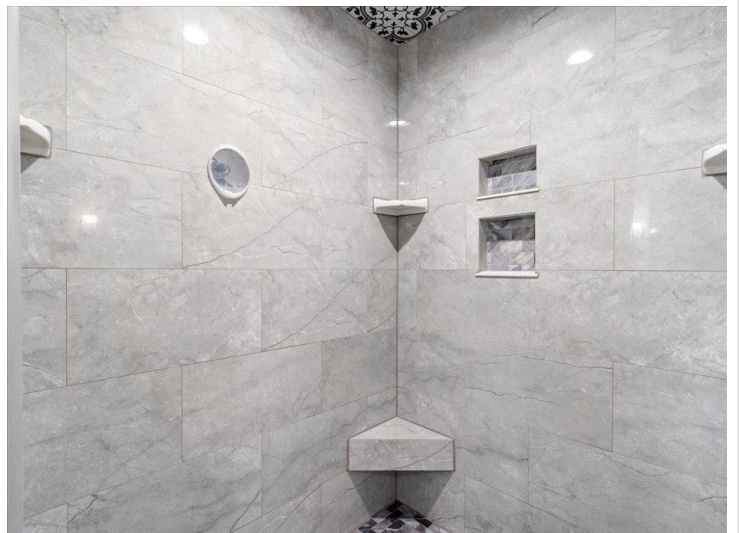
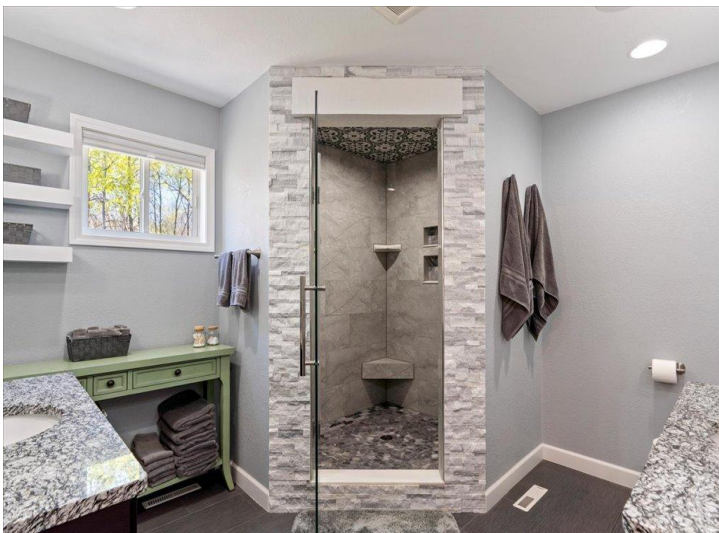
\$679,900
MLS 7073935 Residential
10719 Shore Drive
Merrifield MN 56465



website: www.AffinityRealEstate.com | email: info@affinityrealestate.com | office: 218-237-3333 | fax: 218-237-3377

Affinity
REAL ESTATE INC

\$679,900
MLS 7073935 Residential
10719 Shore Drive
Merrifield MN 56465



website: www.AffinityRealEstate.com | email: info@affinityrealestate.com | office: 218-237-3333 | fax: 218-237-3377

Affinity
REAL ESTATE INC

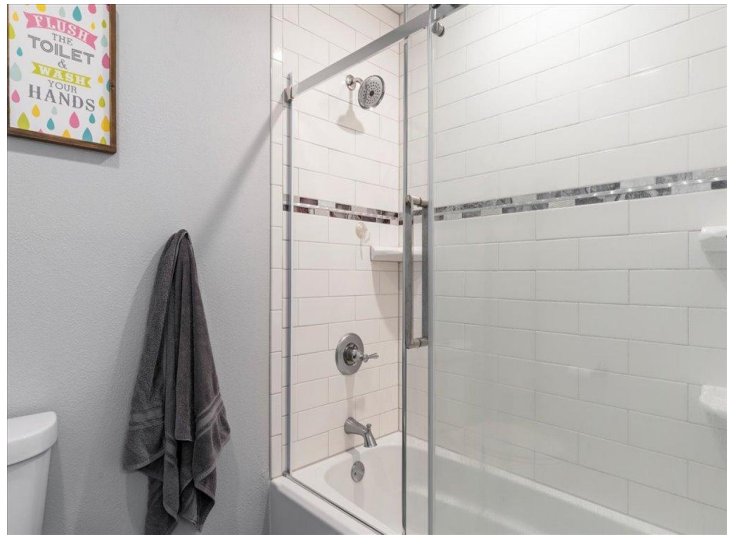
\$679,900
MLS 7073935 Residential
10719 Shore Drive
Merrifield MN 56465



website: www.AffinityRealEstate.com | email: info@affinityrealestate.com | office: 218-237-3333 | fax:218-237-3377



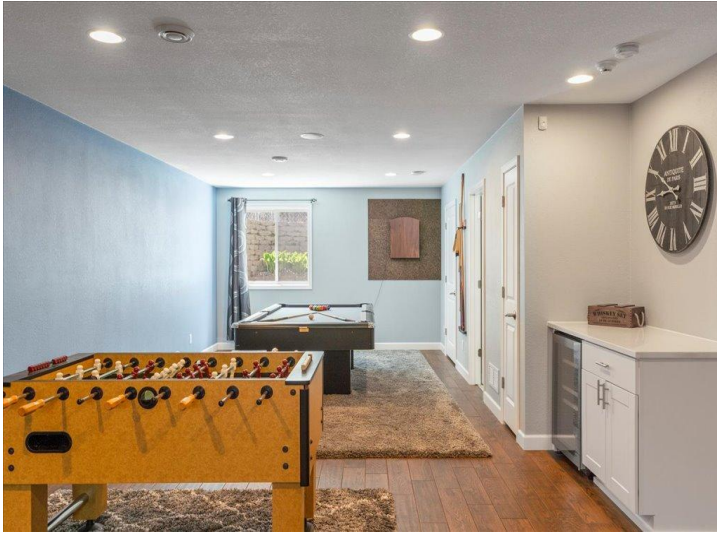
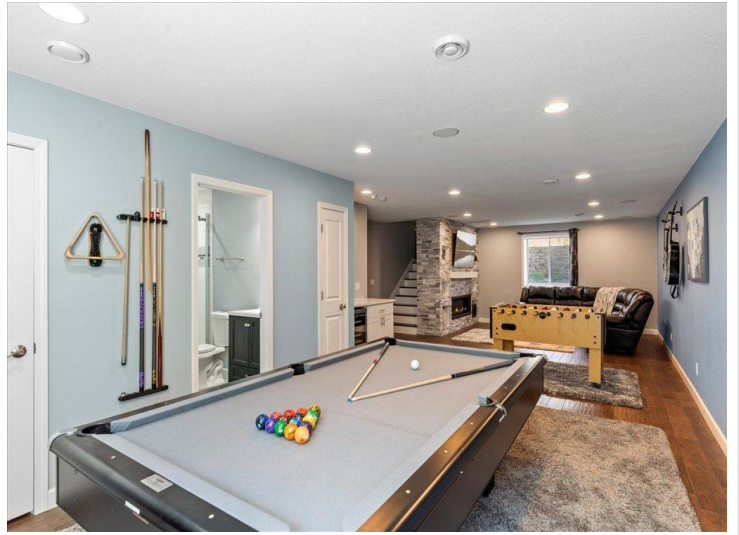
\$679,900
MLS 7073935 Residential
10719 Shore Drive
Merrifield MN 56465



website: www.AffinityRealEstate.com | email: info@affinityrealestate.com | office: 218-237-3333 | fax: 218-237-3377

Affinity
REAL ESTATE INC

\$679,900
MLS 7073935 Residential
10719 Shore Drive
Merrifield MN 56465



website: www.AffinityRealEstate.com | email: info@affinityrealestate.com | office: 218-237-3333 | fax:218-237-3377

Affinity
REAL ESTATE INC

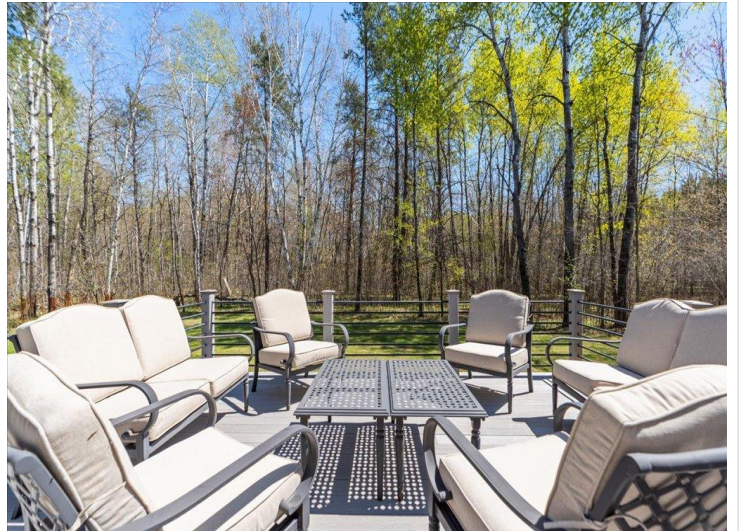
\$679,900
MLS 7073935 Residential
10719 Shore Drive
Merrifield MN 56465



website: www.AffinityRealEstate.com | email: info@affinityrealestate.com | office: 218-237-3333 | fax:218-237-3377



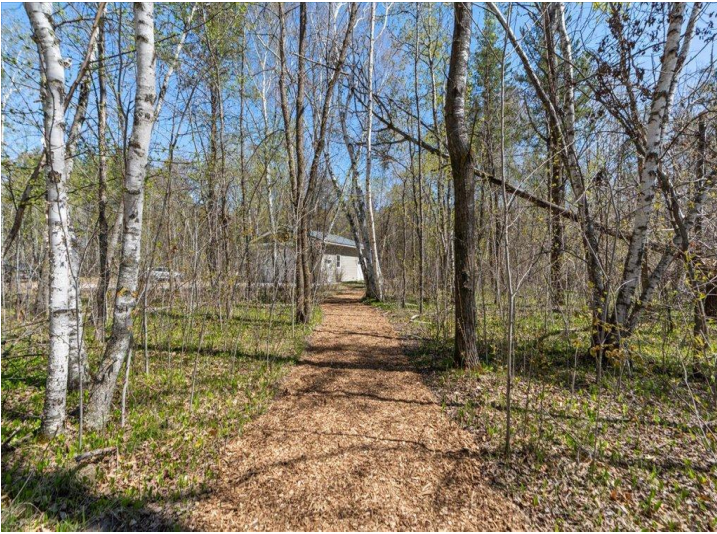
\$679,900
MLS 7073935 Residential
10719 Shore Drive
Merrifield MN 56465



website: www.AffinityRealEstate.com | email: info@affinityrealestate.com | office: 218-237-3333 | fax: 218-237-3377

Affinity
REAL ESTATE INC

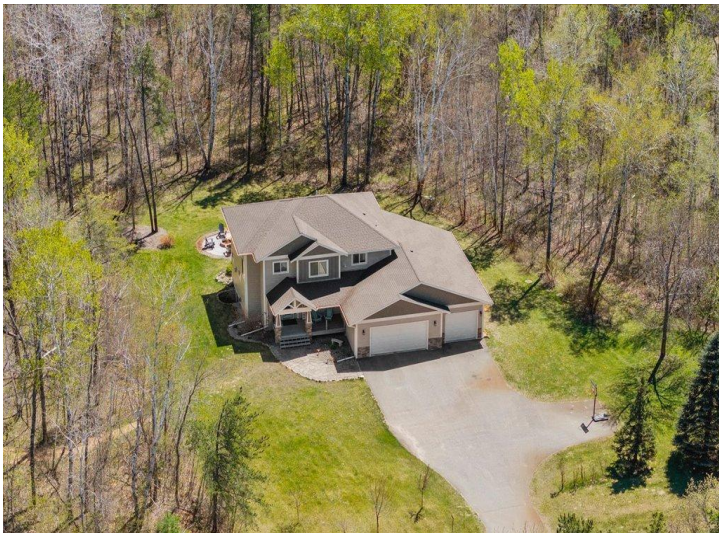
\$679,900
MLS 7073935 Residential
10719 Shore Drive
Merrifield MN 56465



website: www.AffinityRealEstate.com | email: info@affinityrealestate.com | office: 218-237-3333 | fax:218-237-3377



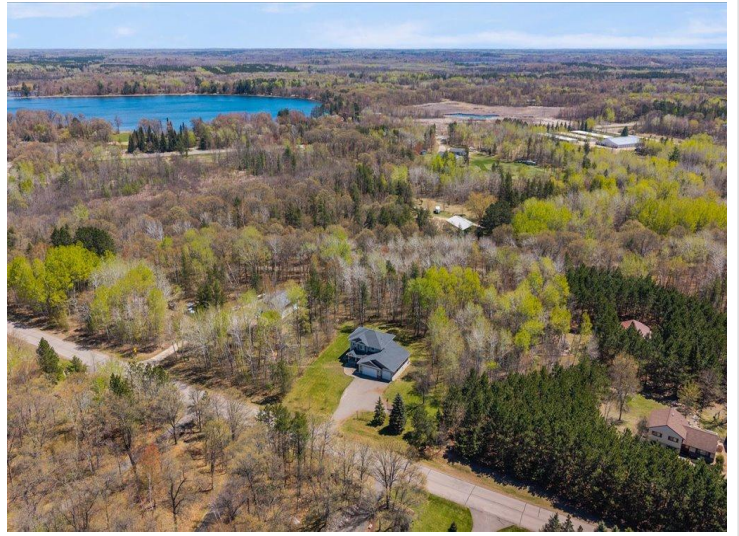
\$679,900
MLS 7073935 Residential
10719 Shore Drive
Merrifield MN 56465



website: www.AffinityRealEstate.com | email: info@affinityrealestate.com | office: 218-237-3333 | fax: 218-237-3377

Affinity
REAL ESTATE INC

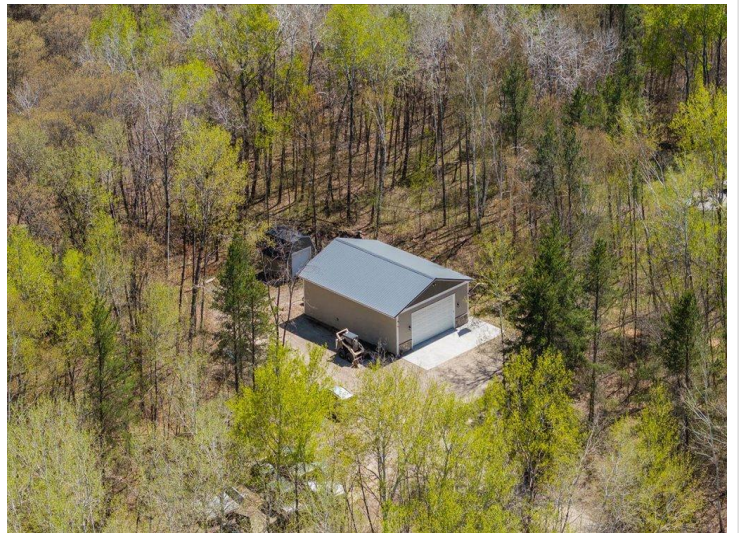
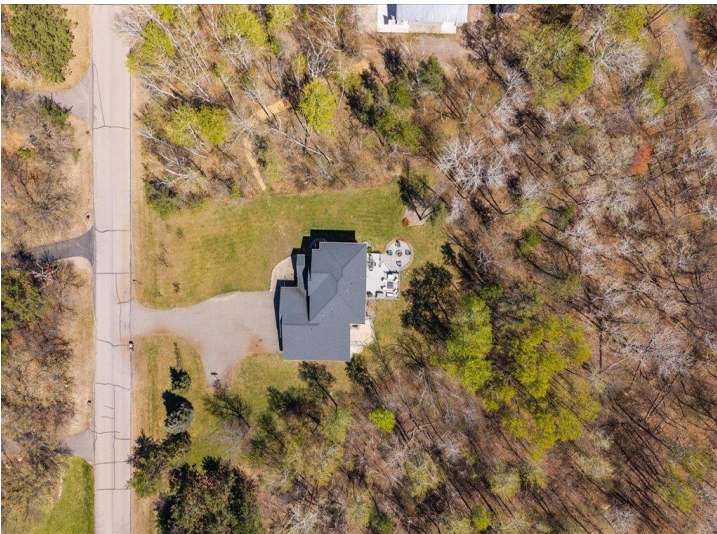
\$679,900
MLS 7073935 Residential
10719 Shore Drive
Merrifield MN 56465



website: www.AffinityRealEstate.com | email: info@affinityrealestate.com | office: 218-237-3333 | fax: 218-237-3377

Affinity
REAL ESTATE INC

\$679,900
MLS 7073935 Residential
10719 Shore Drive
Merrifield MN 56465



website: www.AffinityRealEstate.com | email: info@affinityrealestate.com | office: 218-237-3333 | fax: 218-237-3377

Affinity
REAL ESTATE INC

\$679,900
MLS 7073935 Residential
10719 Shore Drive
Merrifield MN 56465



website: www.AffinityRealEstate.com | email: info@affinityrealestate.com | office: 218-237-3333 | fax:218-237-3377



\$679,900
MLS 7073935 Residential
10719 Shore Drive
Merrifield MN 56465