

MLS 7074130 Land

\$84,900

2.9 Acres
Site Plan Approved

18080 Meadows Circle
Audubon MN 56511

Status: Active

Description:

Build the lake-area lifestyle you've been dreaming about on this spacious 2.9-acre lot in the heart of the Cormorant lakes area! Electric, well & septic holding tank are already added, making this property ready for your future plans. Located just minutes from Big Cormorant Lake, this property offers a great balance of open space, privacy & convenience. Enjoy nearby restaurants, golf courses & several public lake accesses all within a short drive. Whether you're planning a full-time residence, cabin getaway or investment property, this lot gives you the flexibility & setting to make it happen. Easy commuting distance to Detroit Lakes, Fergus Falls & Fargo-Moorhead adds even more value to this great opportunity.

Additional Details:

Lot Acres	2.9
Lot Dimensions	Irregular
School District	2889
Taxes	\$250
Taxes with Assessments	\$250
Tax Year	2025

Additional Features:

Driving Directions:

Google Maps



Listed By:
eXp Realty (219 WF)

Affinity Real Estate Inc. participates in the Regional Multiple Listing Service of Minnesota, Inc Broker Reciprocity (sm) program, allowing us to display other broker's listings on our website. All properties are subject to prior sale, change or withdrawal.



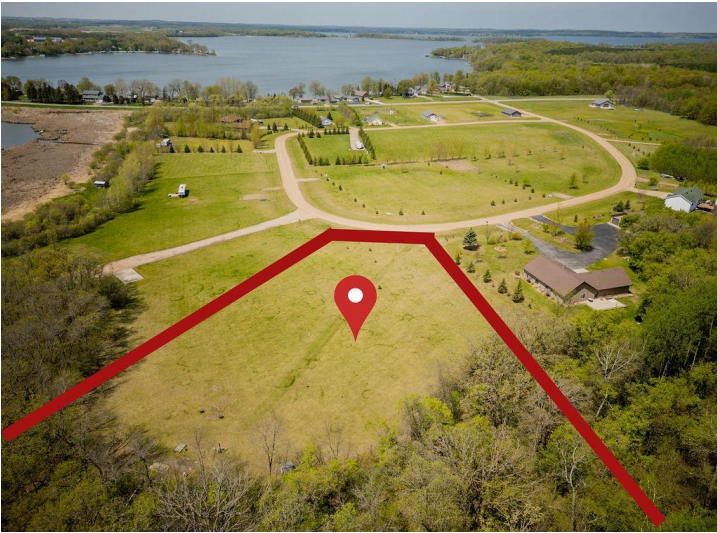
Call Affinity Real Estate

218-237-3333

info@affinityrealestate.com



Affinity Real Estate - 600 Park Avenue South - Park Rapids MN 56470



website: www.AffinityRealEstate.com | email: info@affinityrealestate.com | office: 218-237-3333 | fax: 218-237-3377

Affinity
REAL ESTATE INC

\$84,900
MLS 7074130 Land
18080 Meadows Circle
Audubon MN 56511



website: www.AffinityRealEstate.com | email: info@affinityrealestate.com | office: 218-237-3333 | fax:218-237-3377



\$84,900
MLS 7074130 Land
18080 Meadows Circle
Audubon MN 56511