



MLS 7074189 Residential

\$475,000

2,132 sq ft
3 bedrooms
3 baths

7846 Whitebirch Drive
Pequot Lakes MN 56472

Status: Pending

Description:

Welcome to 7846 Whitebirch Drive in Breezy Point—a beautifully situated 3-bedroom, 3-bathroom home offering privacy, space, and an unbeatable location across the road from Whitebirch Golf Course. Set on a spacious and wooded 1.1-acre lot, this property provides a peaceful setting while remaining close to everything the Breezy Point area has to offer.

Inside, the home features an open-concept layout with vaulted ceilings that create a bright and expansive feel throughout the main living areas. The huge primary suite offers a comfortable private retreat with plenty of space to unwind. Designed for both everyday living and entertaining, the home combines functionality with warm and inviting living spaces.

Enjoy being just minutes from many of the area's premier lakes, golf courses, restaurants, and local amenities. Whether you're looking for a year-round residence, a weekend getaway, or a home near recreation and outdoor activities, this property delivers the ideal combination of location, privacy, and comfort in the heart of the Brainerd Lakes Area.

Additional Details:

Year Built	2001
Lot Acres	1.1
Lot Dimensions	271x165x308x180
Garage Stalls	2
School District	186
Taxes	\$3,140
Taxes with Assessments	\$4,404
Tax Year	2026

Additional Features:

Basement: Finished, Walkout **Fuel:** Natural Gas **Garage:** 2 **Heat:** Forced Air **Sewer:** Private Sewer, Tank with Drainage Field **Water:** Drilled, Well **Air Conditioning:** Central Air

Driving Directions:

From Pequot Lakes head E on County Road 11 for approx. 3.5 miles, turn right on Whitebirch Drive, follow to property on the right.



Listed By:
RE/MAX Advantage Plus

Affinity Real Estate Inc. participates in the Regional Multiple Listing Service of Minnesota, Inc Broker Reciprocity (sm) program, allowing us to display other broker's listings on our website. All properties are subject to prior sale, change or withdrawal.



Call Affinity Real Estate

218-237-3333

info@affinityrealestate.com



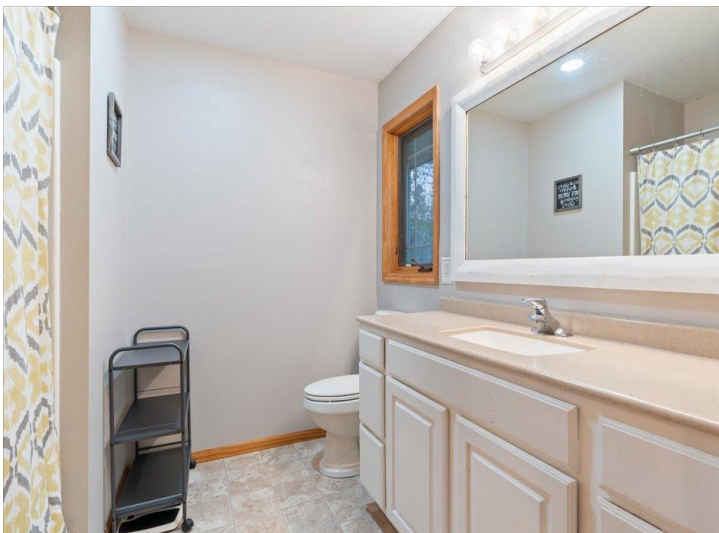
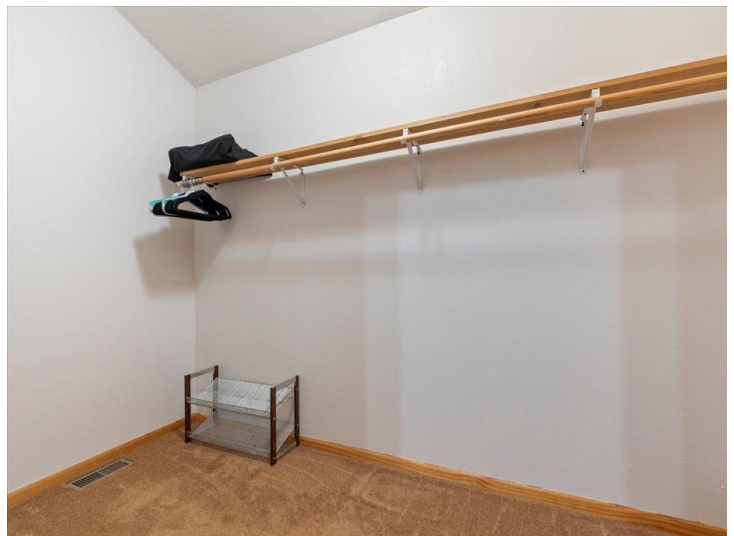
Affinity Real Estate - 600 Park Avenue South - Park Rapids MN 56470



website: www.AffinityRealEstate.com | email: info@affinityrealestate.com | office: 218-237-3333 | fax:218-237-3377



\$475,000
MLS 7074189 Residential
7846 Whitebirch Drive
Pequot Lakes MN 56472



website: www.AffinityRealEstate.com | email: info@affinityrealestate.com | office: 218-237-3333 | fax:218-237-3377

Affinity
REAL ESTATE INC

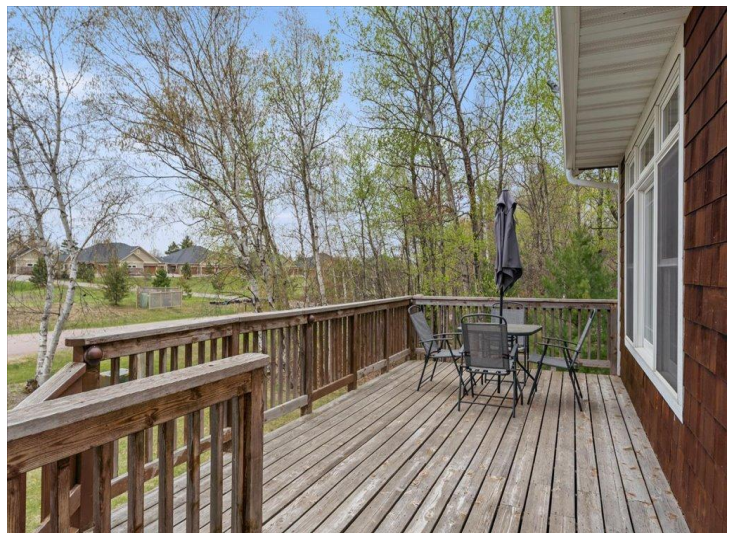
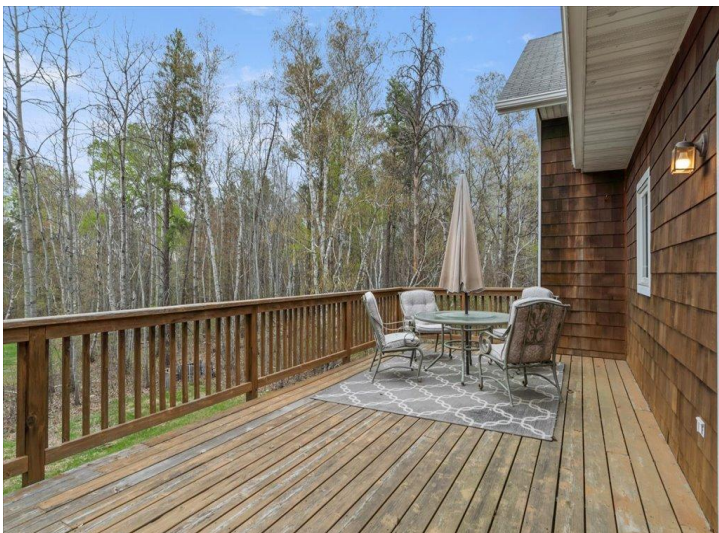
\$475,000
MLS 7074189 Residential
7846 Whitebirch Drive
Pequot Lakes MN 56472



website: www.AffinityRealEstate.com | email: info@affinityrealestate.com | office: 218-237-3333 | fax:218-237-3377

Affinity
REAL ESTATE INC

\$475,000
MLS 7074189 Residential
7846 Whitebirch Drive
Pequot Lakes MN 56472



website: www.AffinityRealEstate.com | email: info@affinityrealestate.com | office: 218-237-3333 | fax: 218-237-3377

Affinity
REAL ESTATE INC

\$475,000
MLS 7074189 Residential
7846 Whitebirch Drive
Pequot Lakes MN 56472

