



MLS 7074314 Lake Home

\$699,900

1,613 sq ft
3 bedrooms
3 baths

1227 Sunset Hill Road
Outing MN 56662

Waterfront: Roosevelt

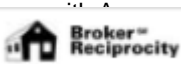
Status: Active

Description:

Stunning Lakefront Retreat on Roosevelt Lake – 2.9 Acres & 200' of west-facing lake frontage this property offers panoramic views, spectacular sunsets, and a peaceful setting towards the end of a quiet dead-end road. A level lakefront area with a sandy bottom makes this a perfect swimming and recreation spot. Enjoy easy access to the water with your private dock and hillside lift to the shoreline. The property is beautifully wooded with towering pines and a mix of mature trees, providing privacy and the ultimate Northwoods vibe. Main Cabin Features: 1 Bedroom / 1 Bath, Gorgeous wood beams, hardwood floors, and natural woodwork throughout, Custom kitchen with granite countertops, Woodburning fireplace adds rustic charm, Vaulted ceilings with skylights and plenty of windows for abundant sunlight, Primary bedroom offers serene views of Roosevelt Lake, Custom bathroom with tiled shower, Cozy living room and a large dining/gathering area perfect for entertaining, Custom benches and thoughtful design touches, new roof in 2025 on main cabin, Comes fully furnished, Security system included, Expansive deck space ideal for hosting guests. Guest Cabin Highlights: 2 Bedrooms / 2 – ¾ Baths (updated in 2025), Beautiful hardwood floors, Laundry room attached for convenience, newer roof, Covered porch for relaxing and enjoying the outdoors. Additional features include a carport and storage shed. Outdoor enthusiasts will appreciate direct access to the Emily–Outing ATV Trail System, featuring 72 miles of scenic riding through forests and lakes country. Trails are open seasonally from May 15 through October 31 and connect to the Moose River trail network for endless adventure. Roosevelt Lake is a highly sought-after 1,511-acre lake located in Cass and Crow Wing Counties, known for its exceptional fishing and crystal-clear waters. Anglers will enjoy excellent fishing for walleye, largemouth and smallmouth bass, northern pike, muskellunge, crappie, bluegill, perch, and tullibee. Whether you're searching for a peaceful lakeside getaway, a multi-cabin family retreat, or a once-in-a-lifetime investment opportunity, this Roosevelt Lake property truly delivers. Properties like this rarely come available — don't miss your chance to own a slice of Minnesota lakefront paradise. An additional adjoining lakefront lot is also available for purchase, creating a rare opportunity for a large family estate or expanded lakeside compound.

Additional Details:

Year Built	1995
Lot Acres	2.9
Lot Dimensions	200x623x204x631
School District	118
Taxes	\$3,320


 Listed By: Edina Realty, Inc.
 Commission: \$6,406
 Listed By: 2026

Additional Features:
 Fuel: Electricity, Wood Heat, Baseboard, Fireplaces
 Affinity Real Estate Inc. participates in the Regional Multiple Listing Service of Minnesota, Inc Broker Reciprocity (sm) program, allowing
 subject to prior sale, change or withdrawal.

Driving Directions:

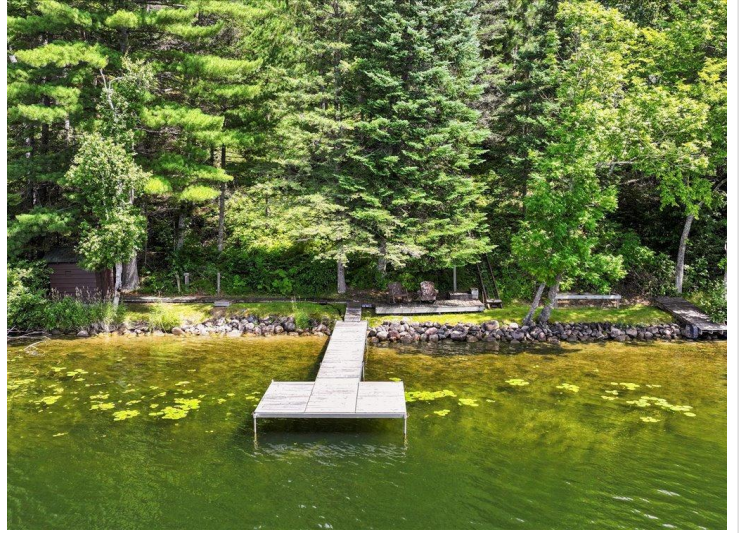


Call Affinity Real Estate
218-237-3333
info@affinityrealestate.com



Affinity Real Estate - 600 Park Avenue South - Park Rapids MN 56470

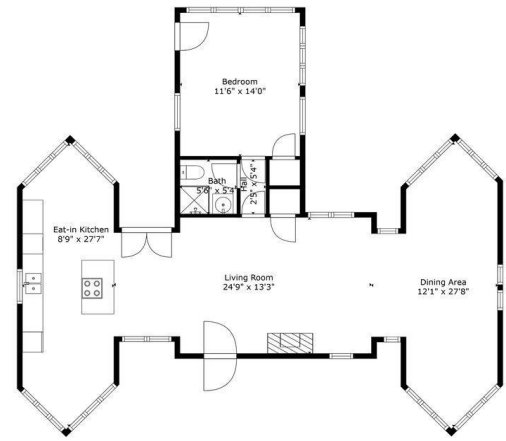
From Emily take State Highway 6 North to Outing and take a right onto County Road 58 to a left onto Sunset Hill Road NE and follow to the property on the left located at 1227 Sunset Hill Road NE.



website: www.AffinityRealEstate.com | email: info@affinityrealestate.com | office: 218-237-3333 | fax:218-237-3377



\$699,900
MLS 7074314 Lake Home
1227 Sunset Hill Road
Outing MN 56662



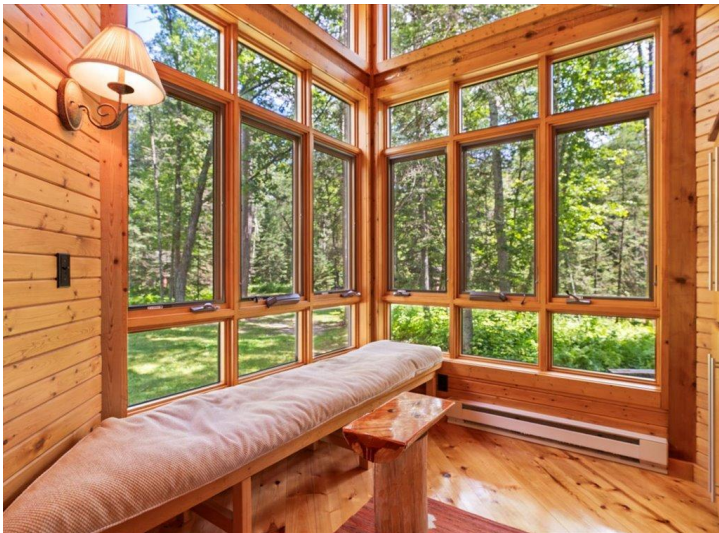
TOTAL: 987 sq. ft.
FLOOR: 1: 987 sq. ft.
WALLS: 106 sq. ft.
Size And Dimensions Are Approximate. Actual Measurements May Vary.



website: www.AffinityRealEstate.com | email: info@affinityrealestate.com | office: 218-237-3333 | fax: 218-237-3377

Affinity
REAL ESTATE INC

\$699,900
MLS 7074314 Lake Home
1227 Sunset Hill Road
Outing MN 56662



website: www.AffinityRealEstate.com | email: info@affinityrealestate.com | office: 218-237-3333 | fax: 218-237-3377

Affinity
REAL ESTATE INC

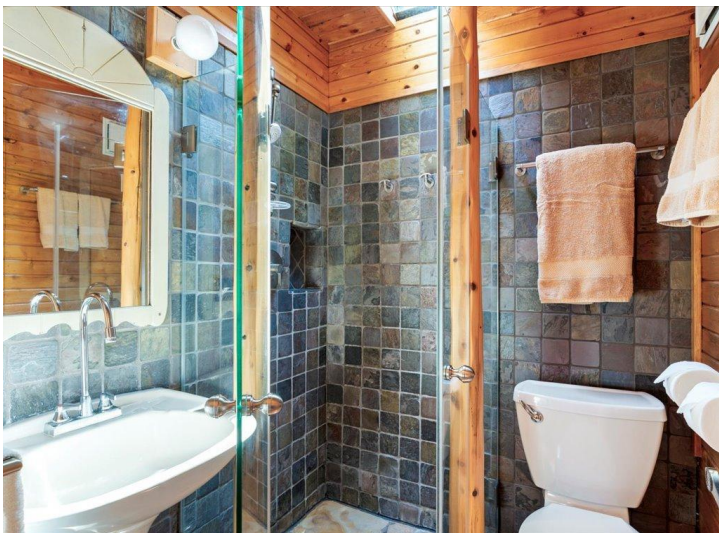
\$699,900
MLS 7074314 Lake Home
1227 Sunset Hill Road
Outing MN 56662



website: www.AffinityRealEstate.com | email: info@affinityrealestate.com | office: 218-237-3333 | fax: 218-237-3377

Affinity
REAL ESTATE INC

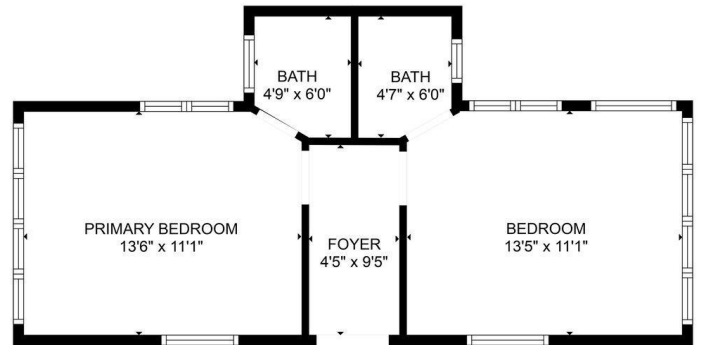
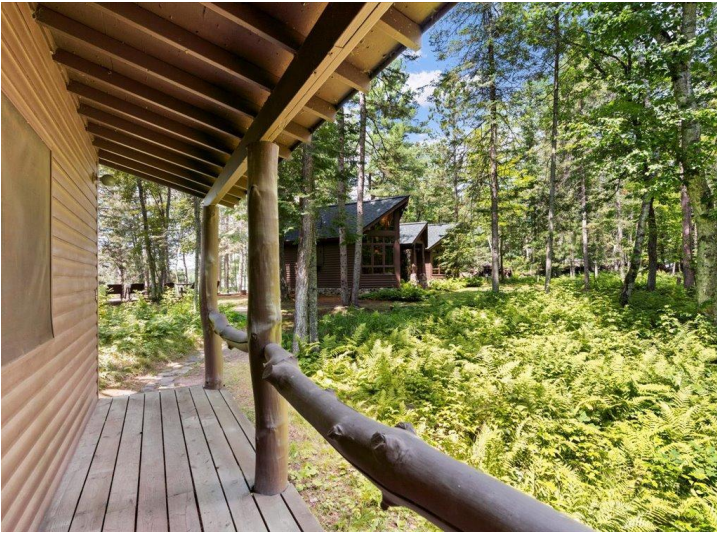
\$699,900
MLS 7074314 Lake Home
1227 Sunset Hill Road
Outing MN 56662



website: www.AffinityRealEstate.com | email: info@affinityrealestate.com | office: 218-237-3333 | fax:218-237-3377

Affinity
REAL ESTATE INC

\$699,900
MLS 7074314 Lake Home
1227 Sunset Hill Road
Outing MN 56662



FLOOR PLAN CREATED BY CURBCASA APP. MEASUREMENTS DEEMED HIGHLY RELIABLE BUT NOT GUARANTEED.

website: www.AffinityRealEstate.com | email: info@affinityrealestate.com | office: 218-237-3333 | fax: 218-237-3377



\$699,900
 MLS 7074314 Lake Home
 1227 Sunset Hill Road
 Outing MN 56662



website: www.AffinityRealEstate.com | email: info@affinityrealestate.com | office: 218-237-3333 | fax:218-237-3377

Affinity
REAL ESTATE INC

\$699,900
MLS 7074314 Lake Home
1227 Sunset Hill Road
Outing MN 56662



website: www.AffinityRealEstate.com | email: info@affinityrealestate.com | office: 218-237-3333 | fax:218-237-3377

Affinity
REAL ESTATE INC

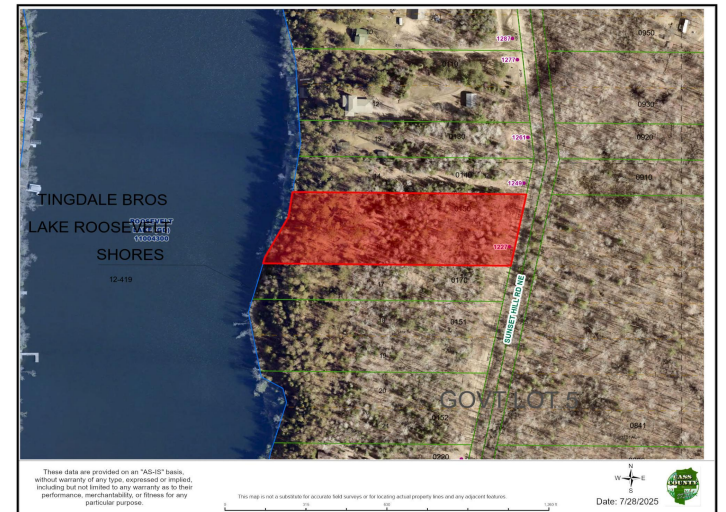
\$699,900
MLS 7074314 Lake Home
1227 Sunset Hill Road
Outing MN 56662



website: www.AffinityRealEstate.com | email: info@affinityrealestate.com | office: 218-237-3333 | fax:218-237-3377



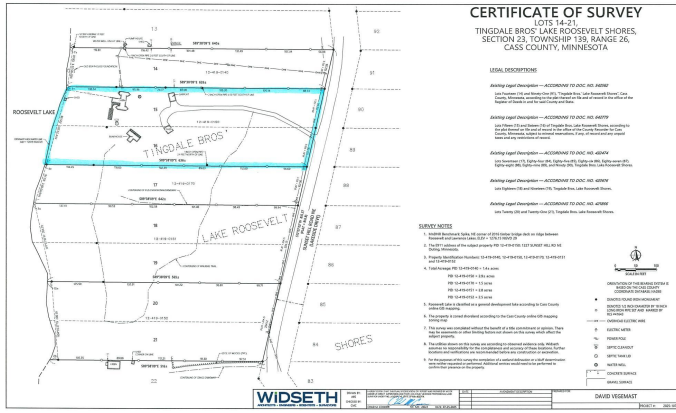
\$699,900
MLS 7074314 Lake Home
1227 Sunset Hill Road
Outing MN 56662



website: www.AffinityRealEstate.com | email: info@affinityrealestate.com | office: 218-237-3333 | fax:218-237-3377



\$699,900
 MLS 7074314 Lake Home
 1227 Sunset Hill Road
 Outing MN 56662



website: www.AffinityRealEstate.com | email: info@affinityrealestate.com | office: 218-237-3333 | fax:218-237-3377



\$699,900
 MLS 7074314 Lake Home
 1227 Sunset Hill Road
 Outing MN 56662