



MLS 7074401 Residential

\$169,900

1,804 sq ft
6 bedrooms
2 baths

10907 US Highway 71
Wadena MN 56482

Status: Active

Description:

Don't miss this spacious 6 bedroom, 2 full bathroom home offering over 1,800 finished sq ft on a beautiful 10 acre corner lot with a convenient location between Wadena and Verndale. Compliant septic system installed in 2008, replacement windows in 2010/2012 with Anderson windows upstairs, and central air installed approximately 8 years ago. Plenty of space inside and out with endless possibilities for country living. Home must close prior to June 10th.

Additional Details:

Year Built	1918
Lot Acres	10.33
Lot Dimensions	1016x605x1368
Garage Stalls	3
School District	2155
Taxes	\$1,890
Taxes with Assessments	\$1,890
Tax Year	2026

Additional Features:

Basement: Unfinished **Fuel:** Propane **Garage:** 3 **Heat:** Outdoor Boiler **Sewer:** Private Sewer, Tank with Drainage Field **Water:** Sand Point **Air Conditioning:** Central Air

Driving Directions:

From Wadena take Us HWY 71 South for about 4.5 miles, home on right.



Listed By:
eXp Realty

Affinity Real Estate Inc. participates in the Regional Multiple Listing Service of Minnesota, Inc Broker Reciprocity (sm) program, allowing us to display other broker's listings on our website. All properties are subject to prior sale, change or withdrawal.



Call Affinity Real Estate

218-237-3333

info@affinityrealestate.com



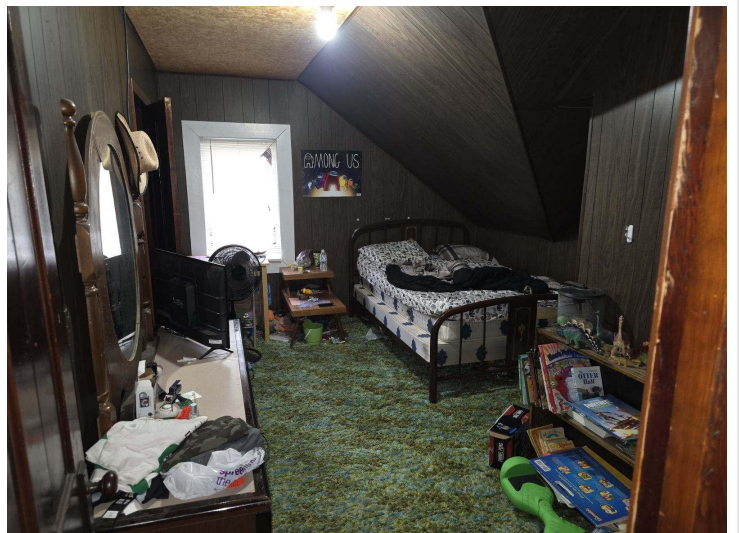
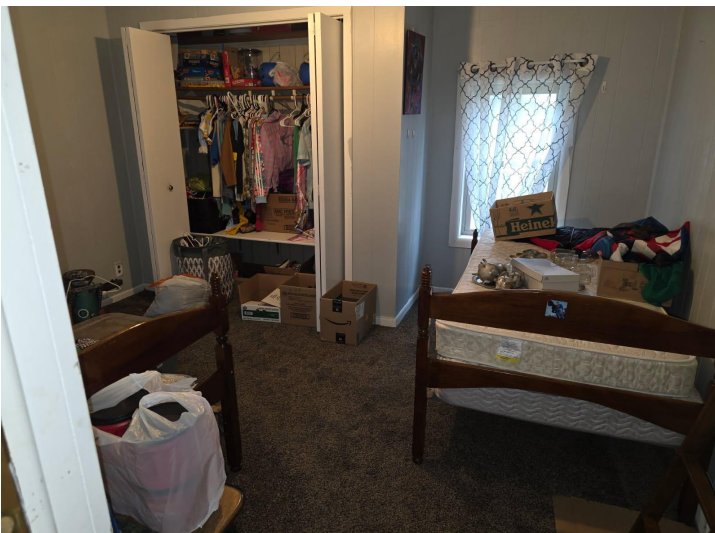
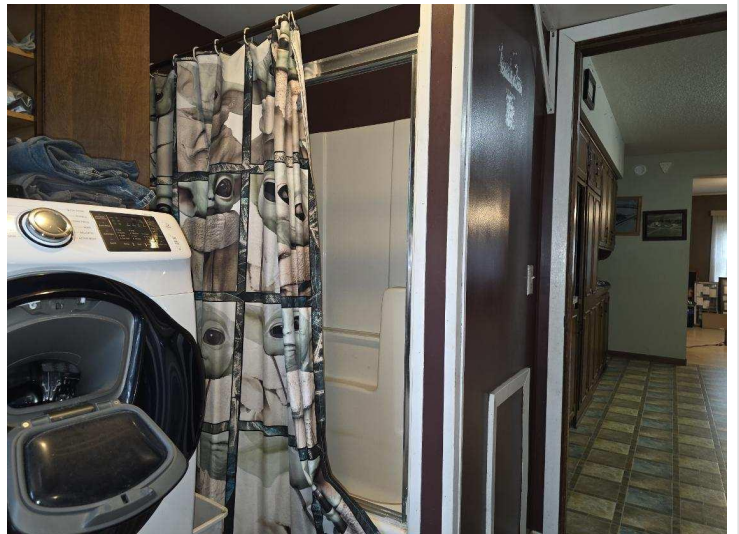
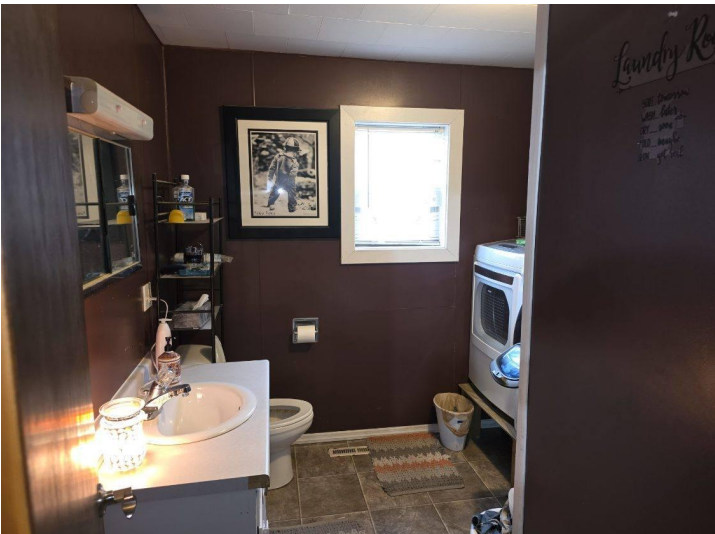
Affinity Real Estate - 600 Park Avenue South - Park Rapids MN 56470



website: www.AffinityRealEstate.com | email: info@affinityrealestate.com | office: 218-237-3333 | fax:218-237-3377



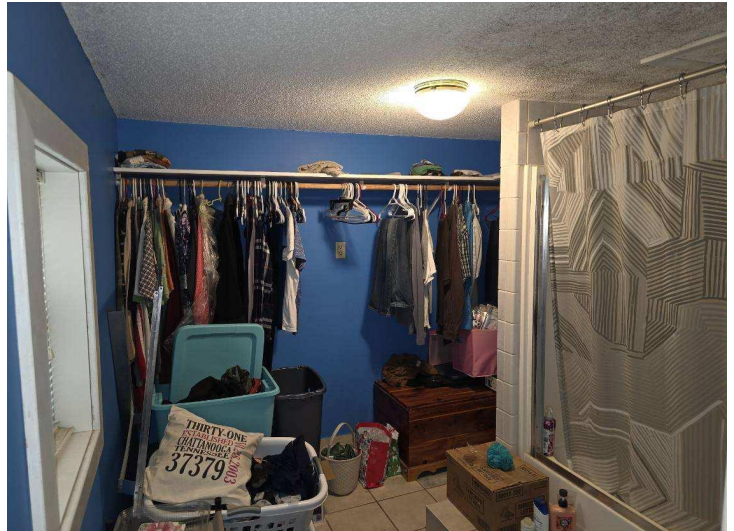
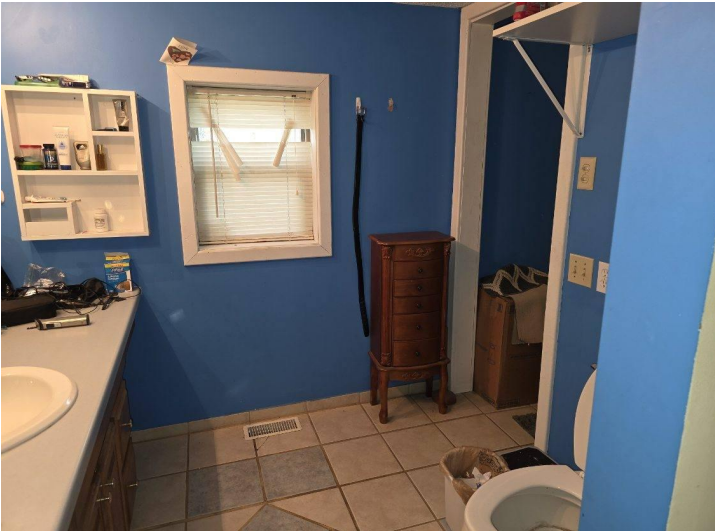
\$169,900
MLS 7074401 Residential
10907 US Highway 71
Wadena MN 56482



website: www.AffinityRealEstate.com | email: info@affinityrealestate.com | office: 218-237-3333 | fax:218-237-3377

Affinity
REAL ESTATE INC

\$169,900
MLS 7074401 Residential
10907 US Highway 71
Wadena MN 56482



website: www.AffinityRealEstate.com | email: info@affinityrealestate.com | office: 218-237-3333 | fax:218-237-3377

Affinity
REAL ESTATE INC

\$169,900
MLS 7074401 Residential
10907 US Highway 71
Wadena MN 56482