



MLS 7074498 Land

\$179,900

36 Acres
Raw Land

TBD Jewel Road
Little Falls MN 56345

Status: Active

Description:

Escape to the North Woods with this scenic 35 acre property ideally situated on a paved public road between Brainerd and Little Falls. Whether you're searching for a peaceful recreational retreat, hunting property, or the perfect setting for your future home and outbuildings, this parcel offers endless possibilities. The land features a beautiful mix of high wooded ground and lower areas that attract wildlife and add natural character to the landscape. A rare opportunity to own acreage in a highly accessible location offering both seclusion and convenience.

Additional Details:

Year Built	1983
Lot Acres	36
Lot Dimensions	irr
School District	482
Taxes	\$732
Taxes with Assessments	\$732
Tax Year	2025

Additional Features:

Driving Directions:

From MN-210 E: turn right onto MN-25 S, turn left onto MN-25, turn right onto Co Rd 9 SE. turn right onto Co Rd 2 SE, turn left onto Co Rd 45 S, continue onto Jewel Rd, lot will be on the right.



Listed By:
eXp Realty

Affinity Real Estate Inc. participates in the Regional Multiple Listing Service of Minnesota, Inc Broker Reciprocity (sm) program, allowing us to display other broker's listings on our website. All properties are subject to prior sale, change or withdrawal.



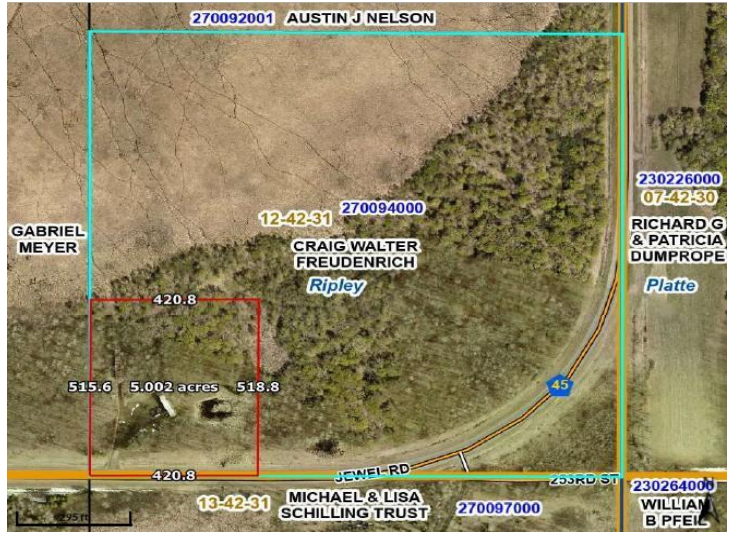
Call Affinity Real Estate

218-237-3333

info@affinityrealestate.com



Affinity Real Estate - 600 Park Avenue South - Park Rapids MN 56470



website: www.AffinityRealEstate.com | email: info@affinityrealestate.com | office: 218-237-3333 | fax: 218-237-3377



\$179,900
 MLS 7074498 Land
 TBD Jewel Road
 Little Falls MN 56345



website: www.AffinityRealEstate.com | email: info@affinityrealestate.com | office: 218-237-3333 | fax:218-237-3377



\$179,900
MLS 7074498 Land
TBD Jewel Road
Little Falls MN 56345