



MLS 7074536 Lake Home

**\$2,750,000**

1,880 sq ft  
3 bedrooms  
3 baths

27965 County 7  
Park Rapids MN 56470

Waterfront: Mantrap

Status: Active

**Description:**

Experience a Canadian-style retreat on the region's premier muskie fishery. This preserved mid-century classic sits on 260+ private acres of mature woods with 1,300+ feet of shoreline, a coveted sandy beach, and a private boat launch. The home retains its pure architectural spirit, featuring many lakeside windows with sweeping views and a dramatic stone fireplace. Offers 3 bedrooms plus a large sleeping loft, perfect for hosting. Enjoy bug-free sunsets from the west-facing lakeside screen room. Outdoor infrastructure includes a dedicated private shooting range and miles of established trails for ATVs, snowshoeing, and wilderness hikes. Storage is covered by a heavy-duty steel pole building for large equipment and a convenient lakeside shed for marine gear. A rare combination of mid-century heritage and absolute acreage seclusion.

**Additional Details:**

Year Built	1952
Lot Acres	260.86
Lot Dimensions	irregular
Garage Stalls	3
School District	308
Taxes	\$11,256
Taxes with Assessments	\$11,256
Tax Year	2026

**Additional Features:**

**Fuel:** Electric, Propane, Wood **Heat:** Forced Air, Fireplace(s)

**Driving Directions:**

FROM PARK RAPIDS, HEAD EAST ON HWY 34 TO THE DORSET CORNER (MN-226) THEN NORTH (LEFT ON MN-226). CONTINUE PAST DORSET AND FOLLOW NORTH PAST ZORBAZ AND THE ROUNDABOUT, CONTINUE NORTH APPROX 4 MORE MILES TO 27965 ON THE LEFT



Listed By:  
Keller Williams Realty Professionals

Affinity Real Estate Inc. participates in the Regional Multiple Listing Service of Minnesota, Inc Broker Reciprocity (sm) program, allowing us to display other broker's listings on our website. All properties are subject to prior sale, change or withdrawal.



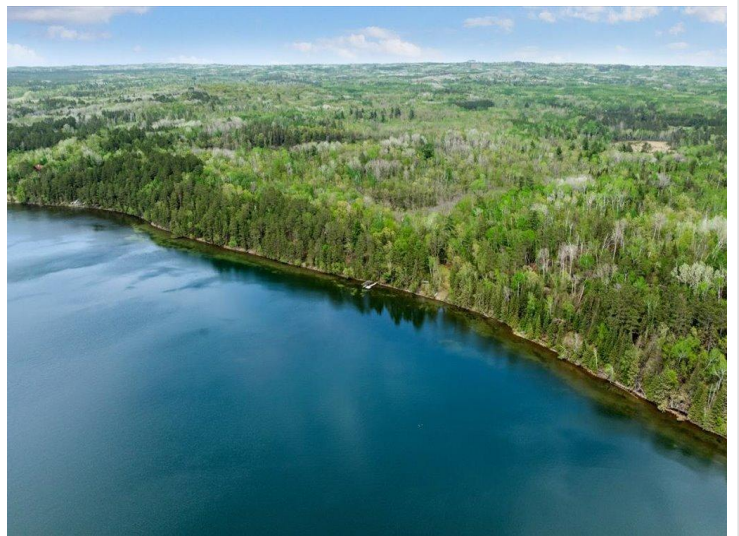
**Call Affinity Real Estate**

**218-237-3333**

**info@affinityrealestate.com**



**Affinity Real Estate - 600 Park Avenue South - Park Rapids MN 56470**



website: [www.AffinityRealEstate.com](http://www.AffinityRealEstate.com) | email: [info@affinityrealestate.com](mailto:info@affinityrealestate.com) | office: 218-237-3333 | fax:218-237-3377



**\$2,750,000**  
MLS 7074536 Lake Home  
27965 County 7  
Park Rapids MN 56470



website: [www.AffinityRealEstate.com](http://www.AffinityRealEstate.com) | email: [info@affinityrealestate.com](mailto:info@affinityrealestate.com) | office: 218-237-3333 | fax:218-237-3377



**\$2,750,000**  
MLS 7074536 Lake Home  
27965 County 7  
Park Rapids MN 56470



website: [www.AffinityRealEstate.com](http://www.AffinityRealEstate.com) | email: [info@affinityrealestate.com](mailto:info@affinityrealestate.com) | office: 218-237-3333 | fax:218-237-3377

**Affinity**  
REAL ESTATE INC

**\$2,750,000**  
MLS 7074536 Lake Home  
27965 County 7  
Park Rapids MN 56470



website: [www.AffinityRealEstate.com](http://www.AffinityRealEstate.com) | email: [info@affinityrealestate.com](mailto:info@affinityrealestate.com) | office: 218-237-3333 | fax:218-237-3377

**Affinity**  
REAL ESTATE INC

**\$2,750,000**  
MLS 7074536 Lake Home  
27965 County 7  
Park Rapids MN 56470



website: [www.AffinityRealEstate.com](http://www.AffinityRealEstate.com) | email: [info@affinityrealestate.com](mailto:info@affinityrealestate.com) | office: 218-237-3333 | fax: 218-237-3377

**Affinity**  
REAL ESTATE INC

**\$2,750,000**  
MLS 7074536 Lake Home  
27965 County 7  
Park Rapids MN 56470



website: [www.AffinityRealEstate.com](http://www.AffinityRealEstate.com) | email: [info@affinityrealestate.com](mailto:info@affinityrealestate.com) | office: 218-237-3333 | fax:218-237-3377

**Affinity**  
REAL ESTATE INC

**\$2,750,000**  
MLS 7074536 Lake Home  
27965 County 7  
Park Rapids MN 56470



website: [www.AffinityRealEstate.com](http://www.AffinityRealEstate.com) | email: [info@affinityrealestate.com](mailto:info@affinityrealestate.com) | office: 218-237-3333 | fax:218-237-3377



**\$2,750,000**  
MLS 7074536 Lake Home  
27965 County 7  
Park Rapids MN 56470



website: [www.AffinityRealEstate.com](http://www.AffinityRealEstate.com) | email: [info@affinityrealestate.com](mailto:info@affinityrealestate.com) | office: 218-237-3333 | fax:218-237-3377



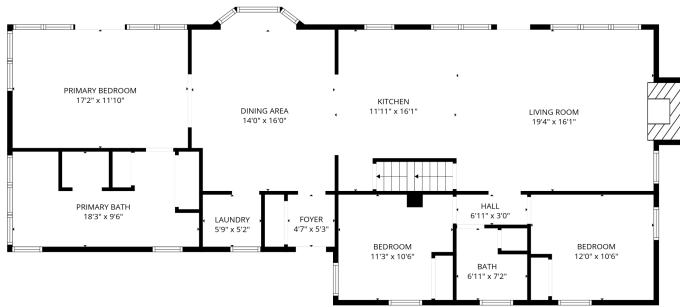
**\$2,750,000**  
MLS 7074536 Lake Home  
27965 County 7  
Park Rapids MN 56470



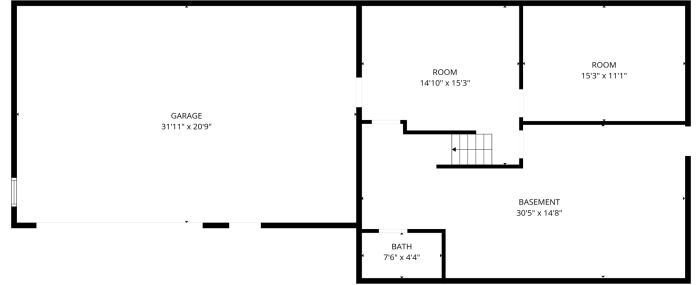
website: [www.AffinityRealEstate.com](http://www.AffinityRealEstate.com) | email: [info@affinityrealestate.com](mailto:info@affinityrealestate.com) | office: 218-237-3333 | fax:218-237-3377



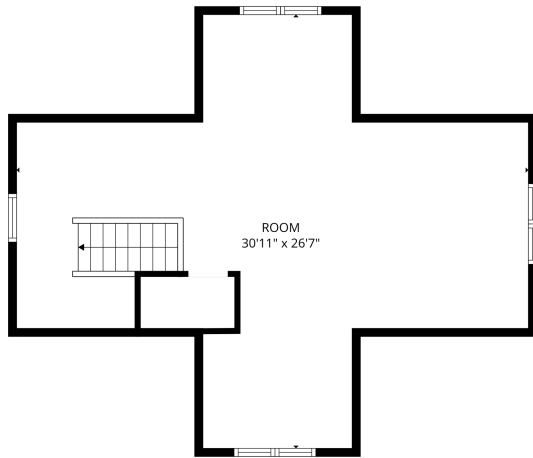
**\$2,750,000**  
MLS 7074536 Lake Home  
27965 County 7  
Park Rapids MN 56470



FLOOR PLAN CREATED BY CUBICASA APP. MEASUREMENTS DEEMED HIGHLY RELIABLE BUT NOT GUARANTEED.



FLOOR PLAN CREATED BY CUBICASA APP. MEASUREMENTS DEEMED HIGHLY RELIABLE BUT NOT GUARANTEED.



FLOOR PLAN CREATED BY CUBICASA APP. MEASUREMENTS DEEMED HIGHLY RELIABLE BUT NOT GUARANTEED.

website: [www.AffinityRealEstate.com](http://www.AffinityRealEstate.com) | email: [info@affinityrealestate.com](mailto:info@affinityrealestate.com) | office: 218-237-3333 | fax: 218-237-3377



**\$2,750,000**  
 MLS 7074536 Lake Home  
 27965 County 7  
 Park Rapids MN 56470