



MLS 7074548 Lake Home

\$235,900

998 sq ft
2 bedrooms
2 baths

12935 Miltona Bay Road
Alexandria MN 56308

Waterfront: Miltona

Status: Active

Description:

So many wonderful memories over the last 30 years for the sellers at what they call their "Lake Miltona Shangri-La!" Now it can be your turn to enjoy it! Extremely well-maintained seasonal home with beautiful lake views! The family room addition offers a place to relax & sit back and enjoy the lake view or gives an additional sleeping area for guests. Another bonus is the master en suite bath, giving this property 2 baths! Location is key for this unit as it is set back off the road giving unparalleled privacy on the patio/grilling area & also an option for more parking than the other units. The additional storage shed is where your fishing gear & lake toys will find plenty of room. Seller is leaving just about all the furnishings so you can get out on the lake for fishing & relaxing ASAP! Easy lake access with the Association maintained dock system with boat launch & sandy beach. Other amenities include fish cleaning house, storm shelter, playground, recreation room with games, puzzles & foosball, ice making machine & shed with workshop tools & supplies. There is even a cabin for members to rent for their extra guests. There is nothing lacking here for you to enjoy your time on Lake Miltona!

Additional Details:


Year Built	1971
Lot Acres	0.22
Lot Dimensions	100 100 75 100
School District	206
Taxes	\$250
Taxes with Assessments	\$250
Tax Year	2026

Additional Features:

Fuel: Propane **Heat:** Forced Air

Driving Directions:

From Alexandria...take Hwy29N to left on County Road 5 to right on Miltona Bay Rd. Follow to end in the Miltona Bay Estates. Property will be on your right.

 Listed By:
RE/MAX Results

Affinity Real Estate Inc. participates in the Regional Multiple Listing Service of Minnesota, Inc Broker Reciprocity (sm) program, allowing us to display other broker's listings on our website. All properties are subject to prior sale, change or withdrawal.

 **Call Affinity Real Estate**
218-237-3333
info@affinityrealestate.com

  
Affinity Real Estate - 600 Park Avenue South - Park Rapids MN 56470



website: www.AffinityRealEstate.com | email: info@affinityrealestate.com | office: 218-237-3333 | fax: 218-237-3377

Affinity
REAL ESTATE INC

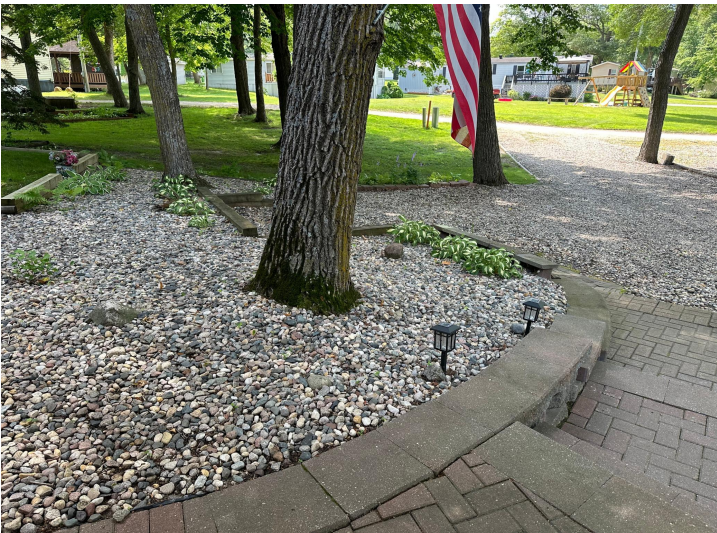
\$235,900
MLS 7074548 Lake Home
12935 Milona Bay Road
Alexandria MN 56308



website: www.AffinityRealEstate.com | email: info@affinityrealestate.com | office: 218-237-3333 | fax:218-237-3377

Affinity
REAL ESTATE INC

\$235,900
MLS 7074548 Lake Home
12935 Milona Bay Road
Alexandria MN 56308



website: www.AffinityRealEstate.com | email: info@affinityrealestate.com | office: 218-237-3333 | fax: 218-237-3377

Affinity
REAL ESTATE INC

\$235,900
MLS 7074548 Lake Home
12935 Milona Bay Road
Alexandria MN 56308



website: www.AffinityRealEstate.com | email: info@affinityrealestate.com | office: 218-237-3333 | fax:218-237-3377



\$235,900
MLS 7074548 Lake Home
12935 Miltona Bay Road
Alexandria MN 56308



website: www.AffinityRealEstate.com | email: info@affinityrealestate.com | office: 218-237-3333 | fax:218-237-3377

Affinity
REAL ESTATE INC

\$235,900
MLS 7074548 Lake Home
12935 Miltona Bay Road
Alexandria MN 56308



website: www.AffinityRealEstate.com | email: info@affinityrealestate.com | office: 218-237-3333 | fax:218-237-3377



\$235,900
MLS 7074548 Lake Home
12935 Milona Bay Road
Alexandria MN 56308



website: www.AffinityRealEstate.com | email: info@affinityrealestate.com | office: 218-237-3333 | fax:218-237-3377



\$235,900
MLS 7074548 Lake Home
12935 Milona Bay Road
Alexandria MN 56308