



MLS 7074701 Lake Land

\$575,000

Description:

Discover a truly unique opportunity to own 76.65 acres of contiguous land just minutes from Baxter and Brainerd. This exceptional property offers a rare blend of privacy, recreation, and natural beauty with proximity to two scenic lakes, including Bass Lake, and access to the Mississippi River corridor. Experience outstanding fishing opportunities on Bass Lake and the Mississippi River, both known for diverse species and year-round angling. Whether casting from shore, launching nearby, or exploring miles of connected waterways, this property places you in the heart of some of the area's most desirable fishing grounds. Located directly across the river from Crow Wing State Park, the property enjoys breathtaking natural surroundings and access to extensive outdoor recreation, including hiking, wildlife viewing, and scenic river exploration. The land itself features a diverse mix of wooded high ground, wetlands, and dramatic bluff topography, offering panoramic views and a true "Up North" feel. Abundant wildlife is present throughout, with strong deer and turkey populations supported by natural cover, water sources, and established travel corridors—making this property an excellent hunting and recreation destination. Multiple potential building sites may exist (subject to local and county approvals), giving buyers the flexibility to explore a future homesite, private retreat, or investment opportunity. The property also offers long-term upside for those willing to navigate development considerations. Enjoy the rare combination of seclusion and convenience, with quick access to the shopping, dining, and amenities of Baxter and Brainerd, while still surrounded by nature and recreational opportunities

Additional Details:

Lot Acres	76.65
Lot Dimensions	1800xIRR
School District	181
Taxes	\$2,582
Taxes with Assessments	\$2,582
Tax Year	2026

Additional Features:

Driving Directions:

Hwy 210 West to CTY RD 36 to CAMP JIM ROAD, follow to Timber Ridge Park



Listed By:
Edina Realty, Inc.

Affinity Real Estate Inc. participates in the Regional Multiple Listing Service of Minnesota, Inc Broker Reciprocity (sm) program, allowing us to display other broker's listings on our website. All properties are subject to prior sale, change or withdrawal.



Call Affinity Real Estate

218-237-3333

info@affinityrealestate.com



Affinity Real Estate - 600 Park Avenue South - Park Rapids MN 56470



website: www.AffinityRealEstate.com | email: info@affinityrealestate.com | office: 218-237-3333 | fax:218-237-3377



\$575,000
MLS 7074701 Lake Land
XXX Timber Ridge Drive
Baxter MN 56425



website: www.AffinityRealEstate.com | email: info@affinityrealestate.com | office: 218-237-3333 | fax:218-237-3377



\$575,000
MLS 7074701 Lake Land
XXX Timber Ridge Drive
Baxter MN 56425



website: www.AffinityRealEstate.com | email: info@affinityrealestate.com | office: 218-237-3333 | fax:218-237-3377



\$575,000
MLS 7074701 Lake Land
XXX Timber Ridge Drive
Baxter MN 56425



website: www.AffinityRealEstate.com | email: info@affinityrealestate.com | office: 218-237-3333 | fax:218-237-3377



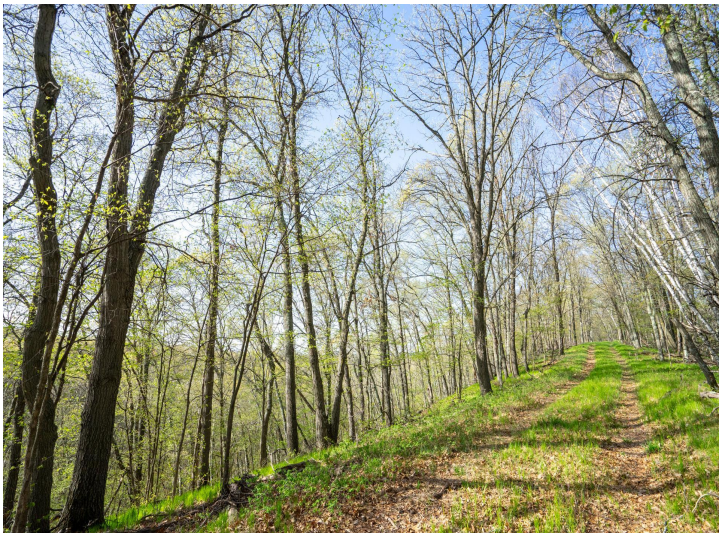
\$575,000
MLS 7074701 Lake Land
XXX Timber Ridge Drive
Baxter MN 56425



website: www.AffinityRealEstate.com | email: info@affinityrealestate.com | office: 218-237-3333 | fax:218-237-3377



\$575,000
MLS 7074701 Lake Land
XXX Timber Ridge Drive
Baxter MN 56425



website: www.AffinityRealEstate.com | email: info@affinityrealestate.com | office: 218-237-3333 | fax:218-237-3377



\$575,000
MLS 7074701 Lake Land
XXX Timber Ridge Drive
Baxter MN 56425



website: www.AffinityRealEstate.com | email: info@affinityrealestate.com | office: 218-237-3333 | fax:218-237-3377



\$575,000
MLS 7074701 Lake Land
XXX Timber Ridge Drive
Baxter MN 56425