



MLS 7074988 Land

\$94,900

17 Acres
Plat Designed

Lot 1 County Road 12
Ironton MN 56455

Status: Active

Description:

Explore the possibilities on this 17-acre wooded parcel in Irondale Township near Crosby and Deerwood. Mature hardwoods and a scenic Northwoods setting create an exceptional opportunity for a custom home, cabin, or recreational getaway.

The property features a mix of wooded acreage and wetlands, while county-owned land bordering the north and west helps preserve the surrounding scenery. Recently created through a lot split, this parcel offers a unique opportunity to own a sizable tract in the Brainerd Lakes Area.

Located near area lakes, golf courses, and the renowned Cuyuna Country State Recreation Area, this property offers convenient access to the outdoor recreation and natural beauty that make this region a sought-after destination.

Additional Details:

Lot Acres	17
Lot Dimensions	1853x400x1854x400
School District	182
Taxes	\$1,779
Taxes with Assessments	\$1,804
Tax Year	2026

Additional Features:

Driving Directions:

From the 4-way stop in Crosby head south on 3rd Ave NW/Hwy 6, turn left onto County Rd 28, head south then turn right onto CR-12 (Deerwood Shortcut), go 2.2 miles to 20118 CR-12. Stay straight north on the new driveway to the left to access parcel.



Listed By:
Northland Sotheby's International Realty

Affinity Real Estate Inc. participates in the Regional Multiple Listing Service of Minnesota, Inc Broker Reciprocity (sm) program, allowing us to display other broker's listings on our website. All properties are subject to prior sale, change or withdrawal.



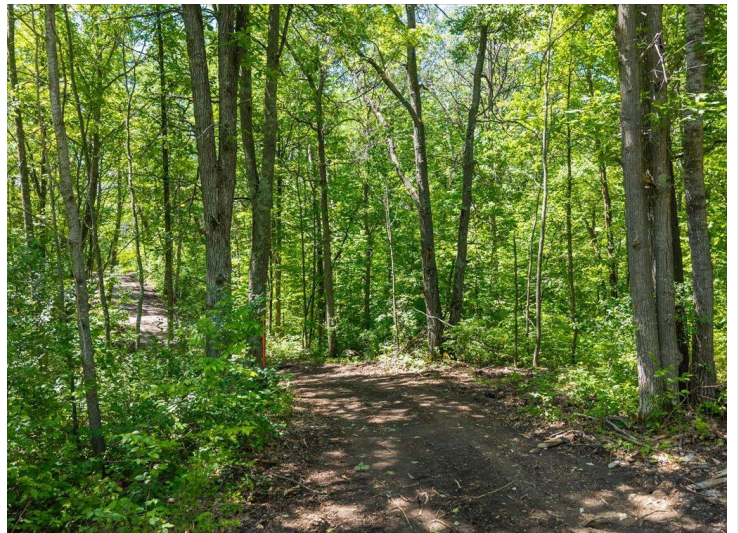
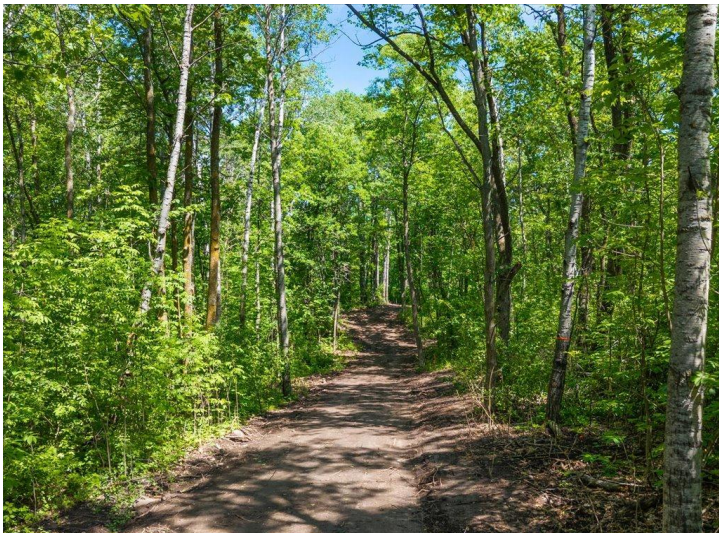
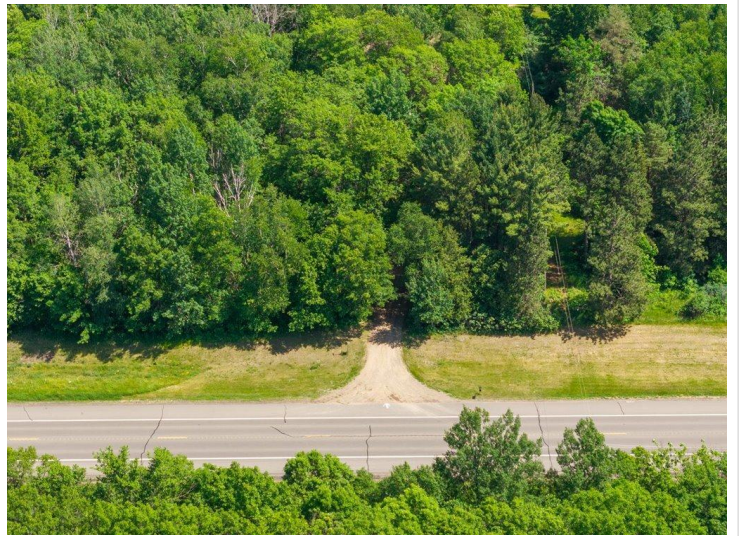
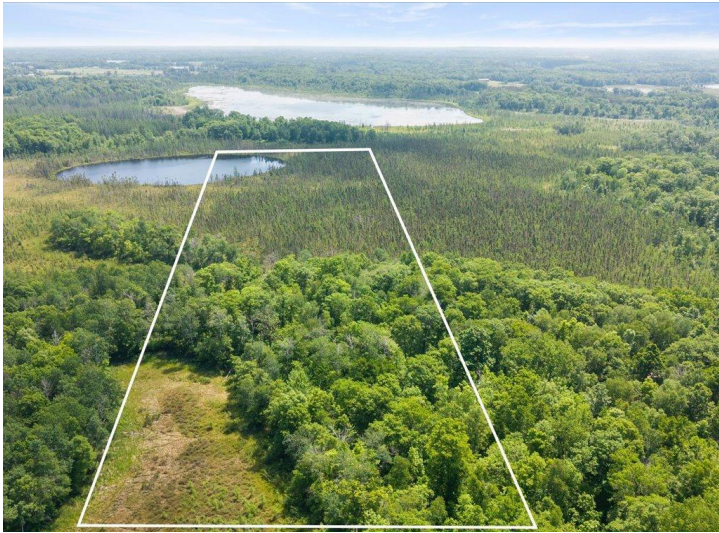
Call Affinity Real Estate

218-237-3333

info@affinityrealestate.com



Affinity Real Estate - 600 Park Avenue South - Park Rapids MN 56470



website: www.AffinityRealEstate.com | email: info@affinityrealestate.com | office: 218-237-3333 | fax: 218-237-3377



\$94,900
MLS 7074988 Land
Lot 1 County Road 12
Ironton MN 56455



website: www.AffinityRealEstate.com | email: info@affinityrealestate.com | office: 218-237-3333 | fax:218-237-3377



\$94,900
MLS 7074988 Land
Lot 1 County Road 12
Ironton MN 56455