



MLS 7075245 Lake Land

\$1,500,000

Description:

It's getting harder and harder to find truly special lake lots on the Whitefish Chain of Lakes, especially on Lower Whitefish. With 258' of frontage and 3.42 acres, this is one of the last premium undeveloped properties left on the entire chain.

The setting is exactly what buyers dream about when they picture an Up North legacy property: towering Norway pines, incredible privacy, and wide panoramic views looking west over the lake for unforgettable sunset nights. The combination of acreage and shoreline gives you room to create something remarkable, whether that's a timeless cabin estate, a modern lake home, or a multi generational retreat designed to stay in the family for decades.

Lower Whitefish has long been one of the most desirable lakes in the Brainerd area because of its clear water, boating access across the chain, and high end surrounding properties. Finding a vacant parcel of this size and quality anymore is exceptionally rare.

If you've been waiting for the right place to build your forever lake home, not just another cabin, but a property your family will talk about for generations, this is the opportunity.

Additional Details:

Lot Acres	3.42
Lot Dimensions	258x494x583x300
School District	186
Taxes	\$1,564
Taxes with Assessments	\$1,564
Tax Year	2025

Additional Features:

Driving Directions:

From Co Rd 16 turn onto Butternut Pt Rd. Take a Left on Liediwood



Listed By:
Woods to Water Real Estate

Affinity Real Estate Inc. participates in the Regional Multiple Listing Service of Minnesota, Inc Broker Reciprocity (sm) program, allowing us to display other broker's listings on our website. All properties are subject to prior sale, change or withdrawal.



Call Affinity Real Estate

218-237-3333

info@affinityrealestate.com



Affinity Real Estate - 600 Park Avenue South - Park Rapids MN 56470



website: www.AffinityRealEstate.com | email: info@affinityrealestate.com | office: 218-237-3333 | fax:218-237-3377



\$1,500,000
MLS 7075245 Lake Land
TBD Liedlwood Ln
Pequot Lakes MN 56472



website: www.AffinityRealEstate.com | email: info@affinityrealestate.com | office: 218-237-3333 | fax: 218-237-3377

Affinity
REAL ESTATE INC

\$1,500,000

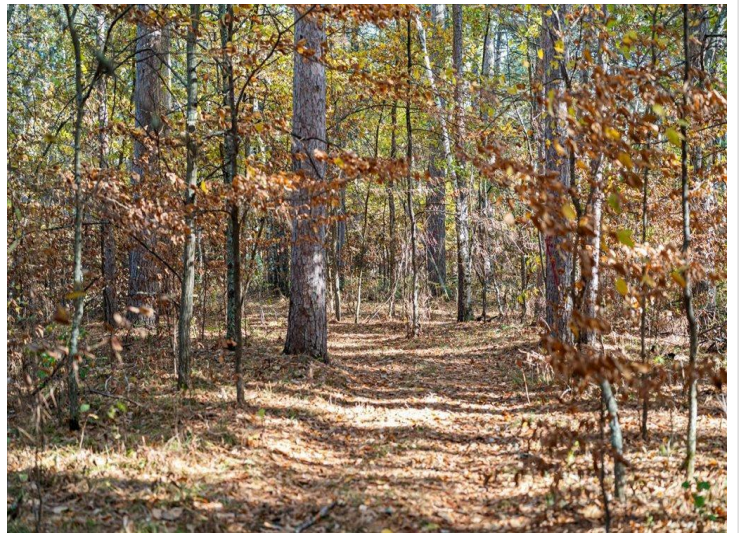
MLS 7075245 Lake Land
TBD Liedlwood Ln
Pequot Lakes MN 56472



website: www.AffinityRealEstate.com | email: info@affinityrealestate.com | office: 218-237-3333 | fax:218-237-3377



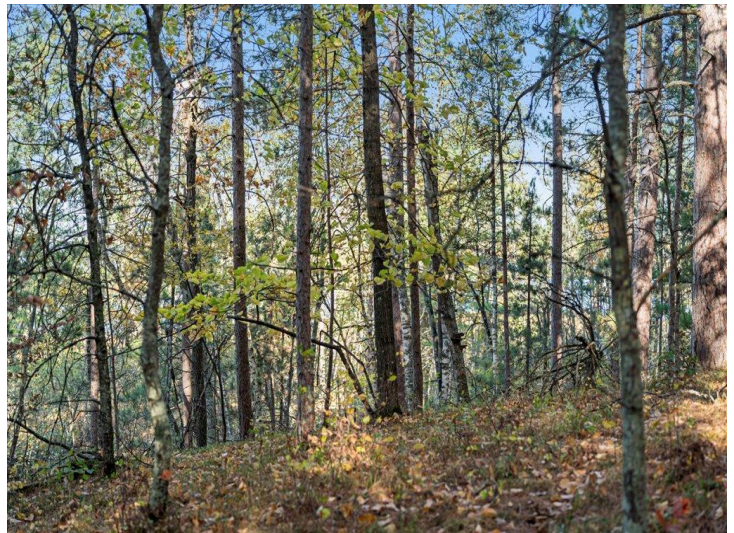
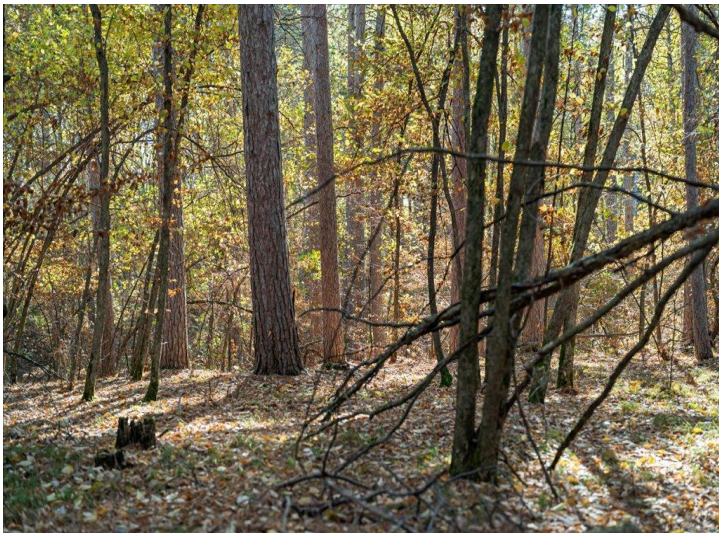
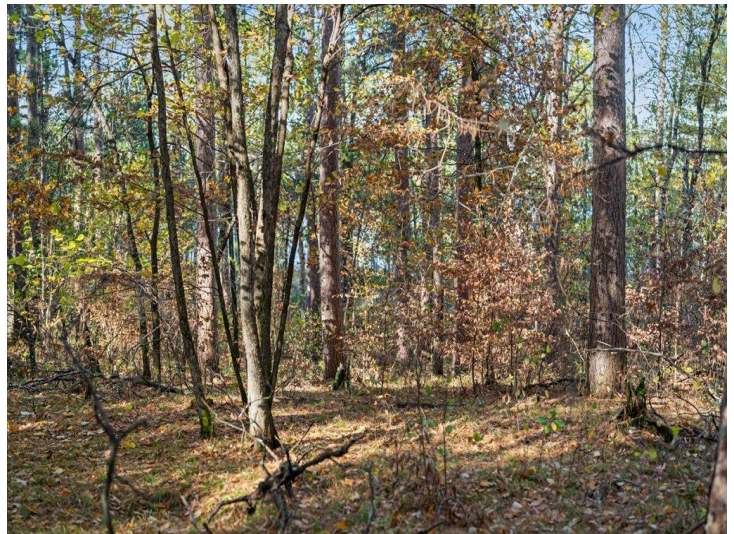
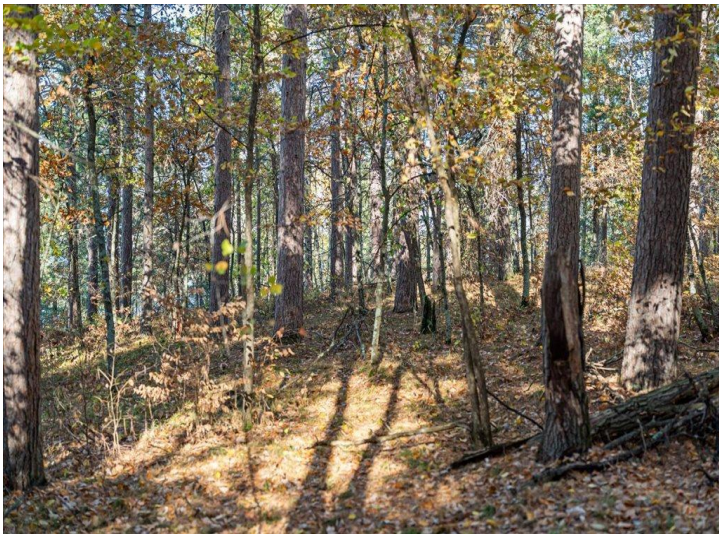
\$1,500,000
MLS 7075245 Lake Land
TBD Liedlwood Ln
Pequot Lakes MN 56472



website: www.AffinityRealEstate.com | email: info@affinityrealestate.com | office: 218-237-3333 | fax:218-237-3377



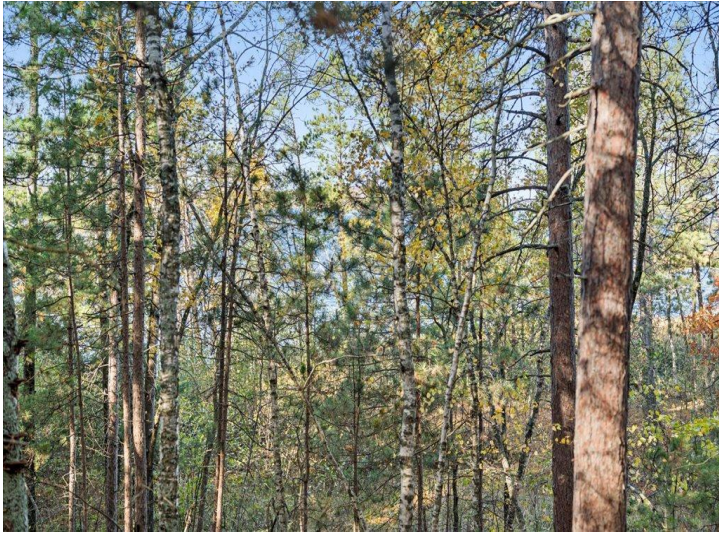
\$1,500,000
MLS 7075245 Lake Land
TBD Liedwood Ln
Pequot Lakes MN 56472



website: www.AffinityRealEstate.com | email: info@affinityrealestate.com | office: 218-237-3333 | fax:218-237-3377



\$1,500,000
MLS 7075245 Lake Land
TBD Liedlwood Ln
Pequot Lakes MN 56472

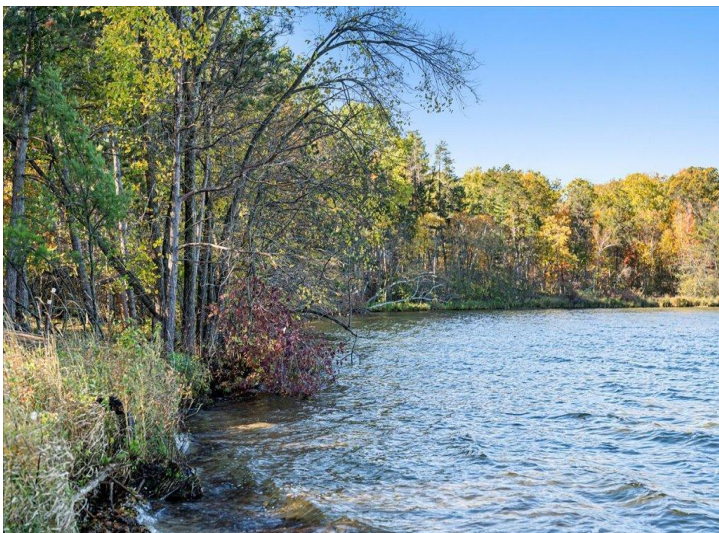
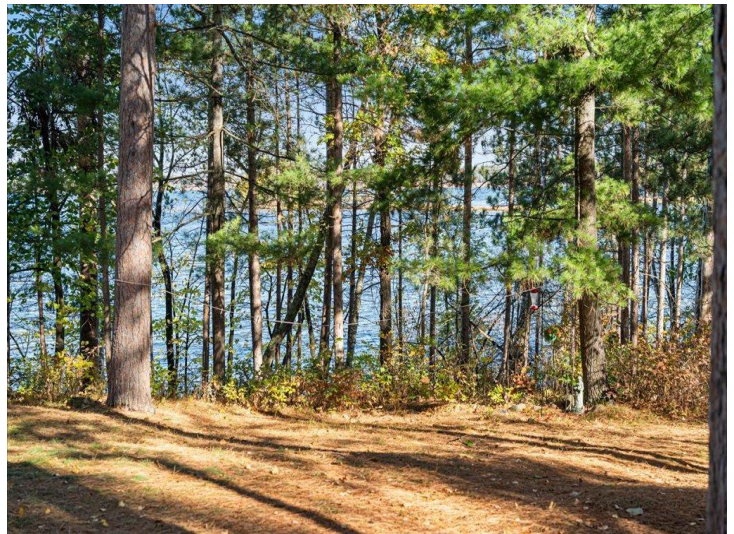
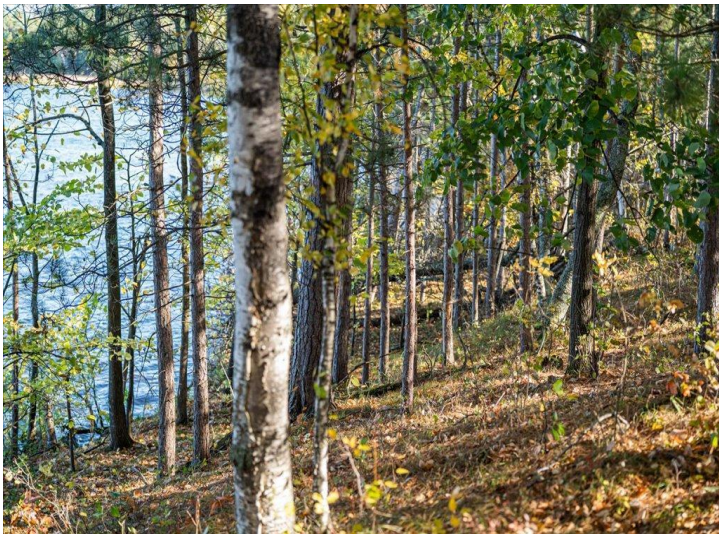


website: www.AffinityRealEstate.com | email: info@affinityrealestate.com | office: 218-237-3333 | fax:218-237-3377

Affinity
REAL ESTATE INC

\$1,500,000

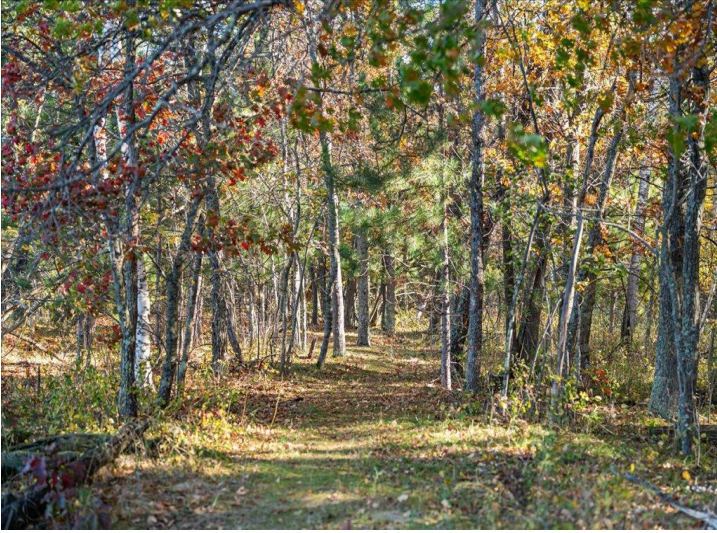
MLS 7075245 Lake Land
TBD Liedlwood Ln
Pequot Lakes MN 56472



website: www.AffinityRealEstate.com | email: info@affinityrealestate.com | office: 218-237-3333 | fax:218-237-3377



\$1,500,000
MLS 7075245 Lake Land
TBD Liedlwood Ln
Pequot Lakes MN 56472



website: www.AffinityRealEstate.com | email: info@affinityrealestate.com | office: 218-237-3333 | fax:218-237-3377



\$1,500,000

MLS 7075245 Lake Land
TBD Liedlwood Ln
Pequot Lakes MN 56472