



MLS 7075734 Residential

**\$195,000**

1,200 sq ft  
2 bedrooms  
1 baths

2960 170th Street  
Glyndon MN 56547

Status: Active

**Description:**

Amazing 10acres w/ lots of Trees and Wild Life,  
24'x24' detached shop/garage, + Manufactured home w/ est. 1500sq. ft. 2-Beds, 1-Bath, Main Floor Laundry, Large xtra room for office/bedroom potential or family room, 2-Car attached Garage, Needs TLC, Kitchen/Dining room is roughed in and needs to be finished. Close to FM Area,

**Additional Details:**

Year Built	1975
Lot Acres	10
Lot Dimensions	658x660
Garage Stalls	2
School District	2164
Taxes	\$1,706
Taxes with Assessments	\$1,758
Tax Year	2026

**Additional Features:**

**Basement:** Crawl Space **Fuel:** Propane **Garage:** 2 **Heat:** Forced Air **Sewer:** Septic System Compliant - No **Water:** Well **Air Conditioning:** Central Air

**Driving Directions:**

2miles N. hwy.10



Listed By:  
RE/MAX Legacy Realty

Affinity Real Estate Inc. participates in the Regional Multiple Listing Service of Minnesota, Inc Broker Reciprocity (sm) program, allowing us to display other broker's listings on our website. All properties are subject to prior sale, change or withdrawal.



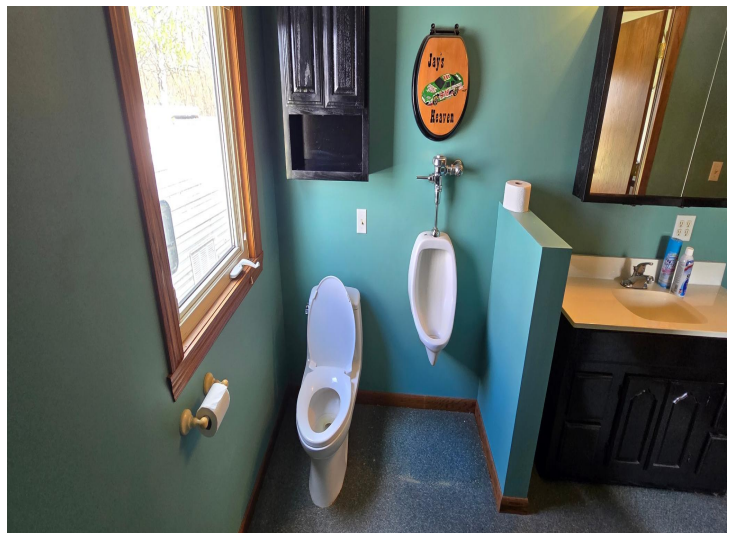
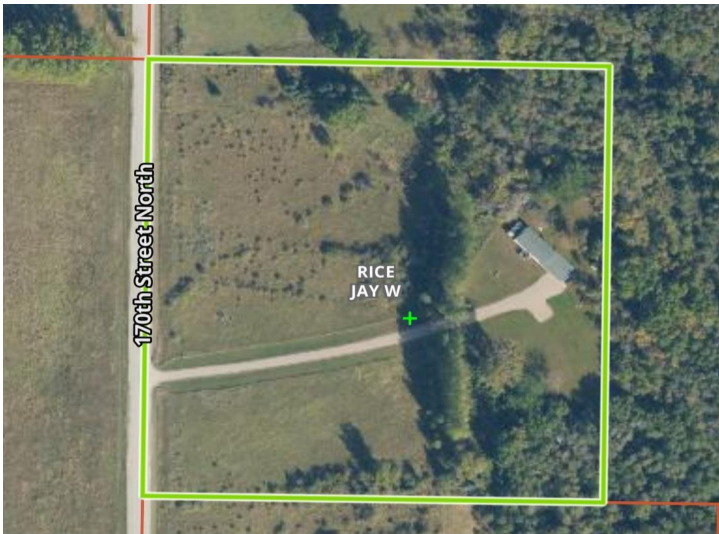
**Call Affinity Real Estate**

**218-237-3333**

**info@affinityrealestate.com**



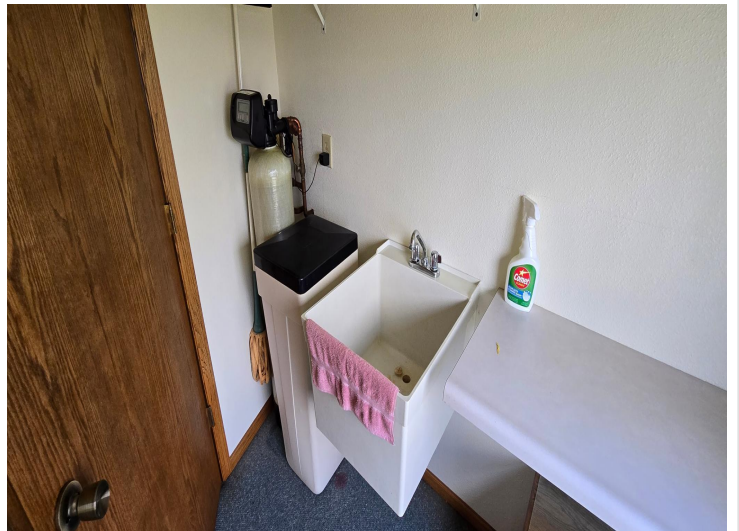
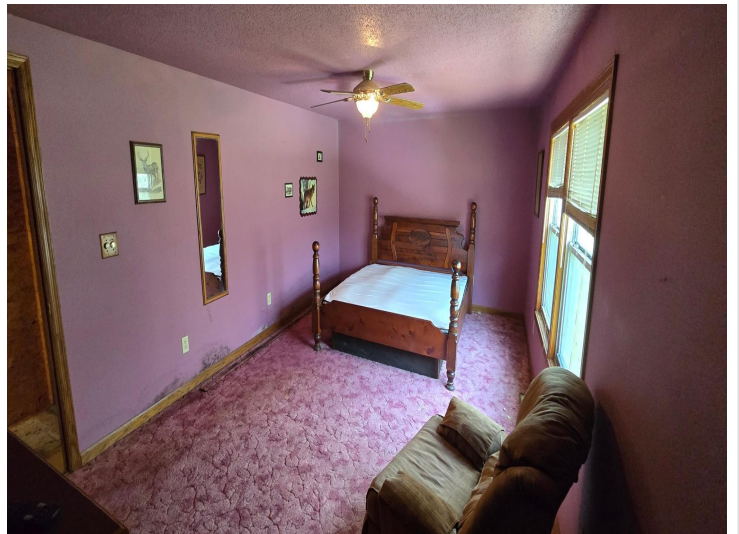
**Affinity Real Estate - 600 Park Avenue South - Park Rapids MN 56470**



website: [www.AffinityRealEstate.com](http://www.AffinityRealEstate.com) | email: [info@affinityrealestate.com](mailto:info@affinityrealestate.com) | office: 218-237-3333 | fax: 218-237-3377



**\$195,000**  
MLS 7075734 Residential  
2960 170th Street  
Glyndon MN 56547



website: [www.AffinityRealEstate.com](http://www.AffinityRealEstate.com) | email: [info@affinityrealestate.com](mailto:info@affinityrealestate.com) | office: 218-237-3333 | fax:218-237-3377



**\$195,000**  
MLS 7075734 Residential  
2960 170th Street  
Glyndon MN 56547



website: [www.AffinityRealEstate.com](http://www.AffinityRealEstate.com) | email: [info@affinityrealestate.com](mailto:info@affinityrealestate.com) | office: 218-237-3333 | fax:218-237-3377



**\$195,000**  
MLS 7075734 Residential  
2960 170th Street  
Glyndon MN 56547



website: [www.AffinityRealEstate.com](http://www.AffinityRealEstate.com) | email: [info@affinityrealestate.com](mailto:info@affinityrealestate.com) | office: 218-237-3333 | fax: 218-237-3377

**Affinity**  
REAL ESTATE INC

**\$195,000**  
MLS 7075734 Residential  
2960 170th Street  
Glyndon MN 56547



website: [www.AffinityRealEstate.com](http://www.AffinityRealEstate.com) | email: [info@affinityrealestate.com](mailto:info@affinityrealestate.com) | office: 218-237-3333 | fax:218-237-3377



**\$195,000**  
MLS 7075734 Residential  
2960 170th Street  
Glyndon MN 56547