



MLS 7075759 Residential

\$349,900

3,146 sq ft
6 bedrooms
6 baths

19391 County Rd 37
Osakis MN 56360

Status: Active

Description:

Nestled on approximately 9 picturesque acres just minutes from beautiful Lake Osakis, this unique country property offers endless possibilities for homeowners, investors, hobby farmers, and entrepreneurs alike. Surrounded by open farmland and towering whispering pines, the setting provides exceptional privacy, peaceful views, and room to bring your vision to life.

The spacious farmhouse features up to 8 bedrooms, 5 bathrooms, and multiple kitchen areas, creating opportunities for a large single-family residence, multi-generational living, guest accommodations, or potential rental income. A large deck overlooks the scenic property and provides the perfect space for relaxing or entertaining.


Outside, you'll find an impressive collection of outbuildings, including a classic barn full of character, a versatile outbuilding with five individual stalls ideal for animals, storage, workshop space, or hobby use, plus an additional large storage building offering ample room for equipment, vehicles, recreational toys, or future projects.

The property's wood-burning boiler system provides an energy-efficient heating option, while the expansive acreage offers space for gardening, animals, recreation, or simply enjoying country living. Conveniently located near Lake Osakis and less than 20 minutes from Alexandria, this property combines rural tranquility with easy access to shopping, dining, recreation, and everyday conveniences.

Whether you're searching for a private family estate, hobby farm, investment opportunity, retreat property, or a place to create your dream country lifestyle, this one-of-a-kind acreage is ready for its next chapter.

Additional Details:

| | |
|-----------------|-----------------|
| Year Built | 1880 |
| Lot Acres | 8.88 |
| Lot Dimensions | 457x845x457x845 |
| Garage Stalls | 4 |
| School District | 213 |
| Taxes | \$2,558 |


 Listed By: **RE/MAX**
 Affinity Real Estate Inc. participates in the Regional Multiple Listing Service of Minnesota, Inc Broker Reciprocity (sm) program, allowing
Additional Features:
 Fuel Dispenser, Wood Boilers, Bins on Quills, For All Properties, Outdoor
 subject to prior sale, change or withdrawal.
Driving Directions:



Call Affinity Real Estate
218-237-3333
info@affinityrealestate.com



Affinity Real Estate - 600 Park Avenue South - Park Rapids MN 56470



website: www.AffinityRealEstate.com | email: info@affinityrealestate.com | office: 218-237-3333 | fax: 218-237-3377



\$349,900
MLS 7075759 Residential
19391 County Rd 37
Osakis MN 56360



website: www.AffinityRealEstate.com | email: info@affinityrealestate.com | office: 218-237-3333 | fax:218-237-3377

Affinity
REAL ESTATE INC

\$349,900
MLS 7075759 Residential
19391 County Rd 37
Osakis MN 56360



website: www.AffinityRealEstate.com | email: info@affinityrealestate.com | office: 218-237-3333 | fax:218-237-3377



\$349,900
MLS 7075759 Residential
19391 County Rd 37
Osakis MN 56360



website: www.AffinityRealEstate.com | email: info@affinityrealestate.com | office: 218-237-3333 | fax:218-237-3377

Affinity
REAL ESTATE INC

\$349,900
MLS 7075759 Residential
19391 County Rd 37
Osakis MN 56360



website: www.AffinityRealEstate.com | email: info@affinityrealestate.com | office: 218-237-3333 | fax:218-237-3377

Affinity
REAL ESTATE INC

\$349,900
MLS 7075759 Residential
19391 County Rd 37
Osakis MN 56360



website: www.AffinityRealEstate.com | email: info@affinityrealestate.com | office: 218-237-3333 | fax:218-237-3377

Affinity
REAL ESTATE INC

\$349,900
MLS 7075759 Residential
19391 County Rd 37
Osakis MN 56360



website: www.AffinityRealEstate.com | email: info@affinityrealestate.com | office: 218-237-3333 | fax:218-237-3377

Affinity
REAL ESTATE INC

\$349,900
MLS 7075759 Residential
19391 County Rd 37
Osakis MN 56360



website: www.AffinityRealEstate.com | email: info@affinityrealestate.com | office: 218-237-3333 | fax:218-237-3377

Affinity
REAL ESTATE INC

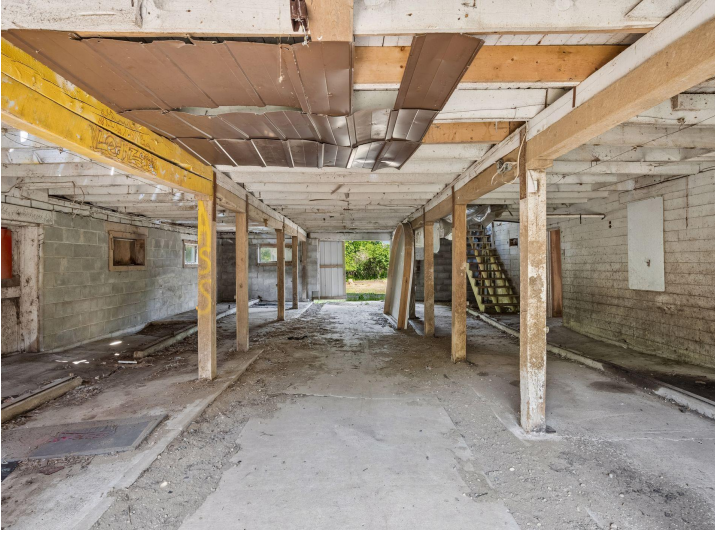
\$349,900
MLS 7075759 Residential
19391 County Rd 37
Osakis MN 56360



website: www.AffinityRealEstate.com | email: info@affinityrealestate.com | office: 218-237-3333 | fax:218-237-3377

Affinity
REAL ESTATE INC

\$349,900
MLS 7075759 Residential
19391 County Rd 37
Osakis MN 56360



website: www.AffinityRealEstate.com | email: info@affinityrealestate.com | office: 218-237-3333 | fax:218-237-3377



\$349,900
MLS 7075759 Residential
19391 County Rd 37
Osakis MN 56360



website: www.AffinityRealEstate.com | email: info@affinityrealestate.com | office: 218-237-3333 | fax:218-237-3377



\$349,900
MLS 7075759 Residential
19391 County Rd 37
Osakis MN 56360



website: www.AffinityRealEstate.com | email: info@affinityrealestate.com | office: 218-237-3333 | fax:218-237-3377

Affinity
REAL ESTATE INC

\$349,900
MLS 7075759 Residential
19391 County Rd 37
Osakis MN 56360



website: www.AffinityRealEstate.com | email: info@affinityrealestate.com | office: 218-237-3333 | fax:218-237-3377



\$349,900
MLS 7075759 Residential
19391 County Rd 37
Osakis MN 56360



website: www.AffinityRealEstate.com | email: info@affinityrealestate.com | office: 218-237-3333 | fax: 218-237-3377

Affinity
REAL ESTATE INC

\$349,900
MLS 7075759 Residential
19391 County Rd 37
Osakis MN 56360



website: www.AffinityRealEstate.com | email: info@affinityrealestate.com | office: 218-237-3333 | fax:218-237-3377



\$349,900
MLS 7075759 Residential
19391 County Rd 37
Osakis MN 56360