



MLS 7076070 Residential

**\$449,000**

3,076 sq ft  
4 bedrooms  
3 baths

5000 Monroe Avenue  
Bemidji MN 56601

Status: Active

**Description:**

Nestled on 10 beautiful acres, this spacious 4-bedroom, 3-bathroom home offers over 2800 sq ft of comfortable living space with the perfect blend of modern updates and country charm. Inside, you'll find stunning granite countertops, generous living areas, and a thoughtfully designed layout - ideal for everyday living and entertaining. Recent upgrades include a new HVAC system for added comfort and efficiency year-round. Step outside to enjoy the covered back deck overlooking the peaceful property. Additional features include a heated double detached garage and a large pole building, providing ample storage, workshop space, or room for hobbies and equipment. This property offers the privacy and functionality you've been looking for with plenty of space to live, work, and play.

**Additional Details:**

Year Built	1998
Lot Acres	10
Lot Dimensions	660x660
Garage Stalls	2
School District	31
Taxes	\$3,486
Taxes with Assessments	\$3,486
Tax Year	2026

**Additional Features:**

**Basement:** Block, Egress Window(s), Finished **Fuel:** Propane **Garage:** 2 **Heat:** Forced Air **Sewer:** Private Sewer **Water:** Private **Air Conditioning:** Central Air

**Driving Directions:**

From Bemidji: South on Hwy 71, Right on N Plantagenet Rd SW, Right on Monroe Ave SW, Property will be on the right.



Listed By:  
Grimes Realty

Affinity Real Estate Inc. participates in the Regional Multiple Listing Service of Minnesota, Inc Broker Reciprocity (sm) program, allowing us to display other broker's listings on our website. All properties are subject to prior sale, change or withdrawal.



**Call Affinity Real Estate**

**218-237-3333**

**info@affinityrealestate.com**



**Affinity Real Estate - 600 Park Avenue South - Park Rapids MN 56470**



website: [www.AffinityRealEstate.com](http://www.AffinityRealEstate.com) | email: [info@affinityrealestate.com](mailto:info@affinityrealestate.com) | office: 218-237-3333 | fax:218-237-3377

**Affinity**  
REAL ESTATE INC

**\$449,000**  
MLS 7076070 Residential  
5000 Monroe Avenue  
Bemidji MN 56601



website: [www.AffinityRealEstate.com](http://www.AffinityRealEstate.com) | email: [info@affinityrealestate.com](mailto:info@affinityrealestate.com) | office: 218-237-3333 | fax:218-237-3377

**Affinity**  
REAL ESTATE INC

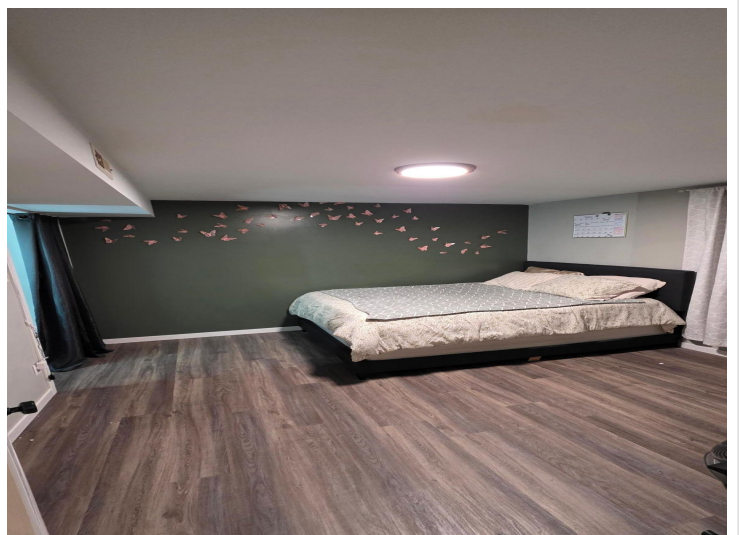
**\$449,000**  
MLS 7076070 Residential  
5000 Monroe Avenue  
Bemidji MN 56601



website: [www.AffinityRealEstate.com](http://www.AffinityRealEstate.com) | email: [info@affinityrealestate.com](mailto:info@affinityrealestate.com) | office: 218-237-3333 | fax: 218-237-3377

**Affinity**  
REAL ESTATE INC

**\$449,000**  
MLS 7076070 Residential  
5000 Monroe Avenue  
Bemidji MN 56601



website: [www.AffinityRealEstate.com](http://www.AffinityRealEstate.com) | email: [info@affinityrealestate.com](mailto:info@affinityrealestate.com) | office: 218-237-3333 | fax:218-237-3377

**Affinity**  
REAL ESTATE INC

**\$449,000**  
MLS 7076070 Residential  
5000 Monroe Avenue  
Bemidji MN 56601



website: [www.AffinityRealEstate.com](http://www.AffinityRealEstate.com) | email: [info@affinityrealestate.com](mailto:info@affinityrealestate.com) | office: 218-237-3333 | fax:218-237-3377



**\$449,000**  
MLS 7076070 Residential  
5000 Monroe Avenue  
Bemidji MN 56601