



MLS 7076169 Land

**\$64,900**

0.88 Acres  
Finished Lot(s)

TBD Lot 4 BLK 1 Chainview Drive  
Alexandria MN 56308

Status: Active

**Description:**

Welcome to Chainview Estates – a beautiful new development in the highly desirable Alexandria Lakes Area! Offering spacious, level lots with room to bring your vision to life, this development provides the perfect setting for your future home. Enjoy the convenience of being just a short drive to local restaurants, shopping, entertainment, and the many amenities the Alexandria area is known for. Located near Lake Carlos, outdoor recreation opportunities are close by, including boating, fishing, lake activities, trails, and year-round enjoyment of Minnesota’s lake country lifestyle. Chainview Estates offers the opportunity to enjoy country-style space with easy access to city conveniences. The generous lot sizes provide flexibility for home design, outdoor living areas, additional garage space, and more. Whether you are looking to build your dream home, a retreat near the lakes, or invest in one of Alexandria’s growing areas, these lots offer outstanding potential.

**Additional Details:**

|                        |                 |
|------------------------|-----------------|
| Lot Acres              | 0.88            |
| Lot Dimensions         | 136x299x120x299 |
| School District        | 206             |
| Taxes                  | (unreported)    |
| Taxes with Assessments | (unreported)    |
| Tax Year               | 2026            |

**Additional Features:**

**Driving Directions:**

County Road 42 N, right on County Road 11, left on Chainview Drive NW



Listed By:  
Counselor Realty Inc of Alex

Affinity Real Estate Inc. participates in the Regional Multiple Listing Service of Minnesota, Inc Broker Reciprocity (sm) program, allowing us to display other broker’s listings on our website. All properties are subject to prior sale, change or withdrawal.



Call Affinity Real Estate

**218-237-3333**

[info@affinityrealestate.com](mailto:info@affinityrealestate.com)



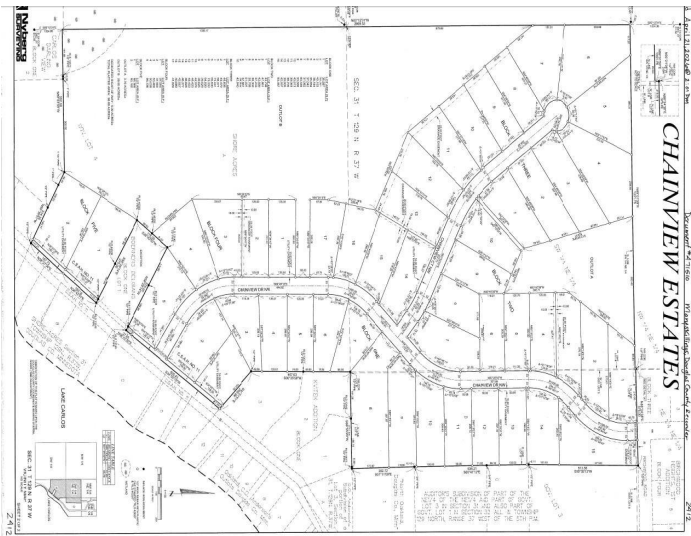
Affinity Real Estate - 600 Park Avenue South - Park Rapids MN 56470



website: [www.AffinityRealEstate.com](http://www.AffinityRealEstate.com) | email: [info@affinityrealestate.com](mailto:info@affinityrealestate.com) | office: 218-237-3333 | fax:218-237-3377



**\$64,900**  
MLS 7076169 Land  
TBD Lot 4 BLK 1 Chainview  
Drive  
Alexandria MN 56308



website: [www.AffinityRealEstate.com](http://www.AffinityRealEstate.com) | email: [info@affinityrealestate.com](mailto:info@affinityrealestate.com) | office: 218-237-3333 | fax:218-237-3377



**\$64,900**  
 MLS 7076169 Land  
 TBD Lot 4 BLK 1 Chainview  
 Drive  
 Alexandria MN 56308