



MLS 7076256 Residential

\$199,900

1,104 sq ft
2 bedrooms
1 baths

28709 Pacer Drive
Browerville MN 56438

Status: Coming Soon

Description:

Don't miss this cute three bedroom, one bath Browerville home on 3+ acres. Home features an open floor plan, large primary suite, vaulted wood ceilings, main floor laundry, two fireplaces, fenced back yard, an over sized two plus car heated garage with lean to. There are a total of 8 lots and potential to split or build on additional lots. Set up a showing today.

Additional Details:

Year Built	1979
Lot Acres	3.04
Lot Dimensions	Irregular dimensions
Garage Stalls	2
School District	2170
Taxes	\$1,172
Taxes with Assessments	\$1,172
Tax Year	2025

Additional Features:

Fuel: Electric, Propane, Wood **Heat:** Baseboard, Fireplace(s), Other, Wood Stove

Driving Directions:

From Motley: South on Hwy 10 eight miles to Right on County Road 7, approximately 4 miles, continue West to County Road 26, Left on County Road 17, Right on Pacer Drive.



Listed By:
eXp Realty

Affinity Real Estate Inc. participates in the Regional Multiple Listing Service of Minnesota, Inc Broker Reciprocity (sm) program, allowing us to display other broker's listings on our website. All properties are subject to prior sale, change or withdrawal.



Call Affinity Real Estate

218-237-3333

info@affinityrealestate.com



Affinity Real Estate - 600 Park Avenue South - Park Rapids MN 56470



website: www.AffinityRealEstate.com | email: info@affinityrealestate.com | office: 218-237-3333 | fax:218-237-3377

Affinity
REAL ESTATE INC

\$199,900
MLS 7076256 Residential
28709 Pacer Drive
Browerville MN 56438



website: www.AffinityRealEstate.com | email: info@affinityrealestate.com | office: 218-237-3333 | fax:218-237-3377

Affinity
REAL ESTATE INC

\$199,900
MLS 7076256 Residential
28709 Pacer Drive
Browerville MN 56438



website: www.AffinityRealEstate.com | email: info@affinityrealestate.com | office: 218-237-3333 | fax: 218-237-3377

Affinity
REAL ESTATE INC

\$199,900
MLS 7076256 Residential
28709 Pacer Drive
Browerville MN 56438



website: www.AffinityRealEstate.com | email: info@affinityrealestate.com | office: 218-237-3333 | fax: 218-237-3377

Affinity
REAL ESTATE INC

\$199,900
MLS 7076256 Residential
28709 Pacer Drive
Browerville MN 56438



website: www.AffinityRealEstate.com | email: info@affinityrealestate.com | office: 218-237-3333 | fax:218-237-3377



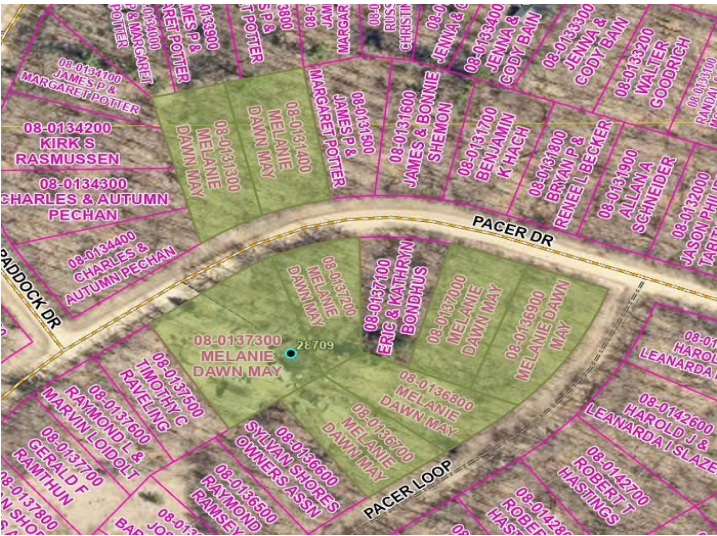
\$199,900
MLS 7076256 Residential
28709 Pacer Drive
Browerville MN 56438



website: www.AffinityRealEstate.com | email: info@affinityrealestate.com | office: 218-237-3333 | fax:218-237-3377



\$199,900
MLS 7076256 Residential
28709 Pacer Drive
Browerville MN 56438



website: www.AffinityRealEstate.com | email: info@affinityrealestate.com | office: 218-237-3333 | fax:218-237-3377



\$199,900
 MLS 7076256 Residential
 28709 Pacer Drive
 Browerville MN 56438