



MLS 7076287 Lake Land

**\$159,900**

**Description:**

Large lots perfect for building a dream lake home. West facing lake frontage perfect for watching sunsets over the great fishing and recreation lake. Gradual slope to lake ideal for rear walkout home. Private drive to property off County Rd 31.

**Additional Details:**

Lot Acres	1.2
Lot Dimensions	194 x 245 x 205 x 185
School District	318
Taxes	\$202
Taxes with Assessments	\$202
Tax Year	2026

**Additional Features:**

**Driving Directions:**

From Twin Cities, MN Hwy 65 N to US Hwy 2, U.S. Hwy 2 W to Deer River, MN Hwy 46 N to Itasca Co. Rd 31, 3 miles to Moose Bay Trail.



Listed By:  
Kontor Realty Group

Affinity Real Estate Inc. participates in the Regional Multiple Listing Service of Minnesota, Inc Broker Reciprocity (sm) program, allowing us to display other broker's listings on our website. All properties are subject to prior sale, change or withdrawal.



**Call Affinity Real Estate**

**218-237-3333**

**info@affinityrealestate.com**



**Affinity Real Estate - 600 Park Avenue South - Park Rapids MN 56470**



©RMLSMN Lake from about the center of Lot 4

11/05/2007

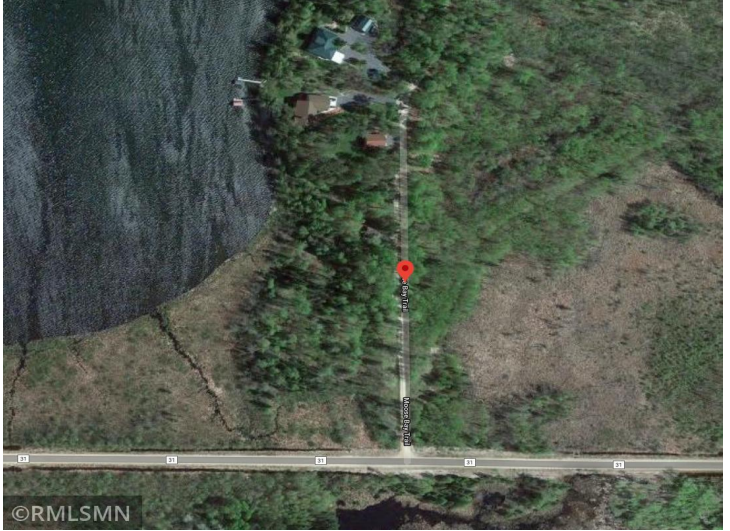


©RMLSMN Lake between Lots 3 & 4.

11/05/2007



©RMLSMN



©RMLSMN

website: [www.AffinityRealEstate.com](http://www.AffinityRealEstate.com) | email: [info@affinityrealestate.com](mailto:info@affinityrealestate.com) | office: 218-237-3333 | fax:218-237-3377



**\$159,900**  
MLS 7076287 Lake Land  
4xxxx Moose Bay Trail  
Northome MN 56661