



MLS 7076392 Lake Home

\$675,000

2,318 sq ft
4 bedrooms
2 baths

280 Lake Lawrence Road
Outing MN 56662

Waterfront: Lawrence

Status: Hold

Description:

Welcome to this very unique & private property situated on about 13 acres on Lawrence Lake! The channel connects Lawrence to premier Roosevelt Lake totaling over 1700 acres water to recreate & explore! The warm & inviting cabin features half log siding & 2 decks! 4 brs and 2 baths inside. There is a 24x26 garage AND a 30x56 pole building with concrete floor! Inside the main living area is open spacious & comfortable! Vaulted ceiling, wood burning frplc, and circle sawn wood floor throughout the living/dining area! Fantastic wall of windows face the lakeside. Kitchen features leather finished granite counters & raised oak cabinets. Kitchen overlooks living area with view out the large windows. Lower level family room with frplc! "Sunroom" off family room plus convenient "mud room" with large closet by walkout to yard! Outdoor enthusiasts note: the snowmobile trails is right across the road. Ride your ATV to the famous Outing/Emily trail system from the property. 100's of acres of public land accessible just west down the road. Great fishing abounds in both Lawrence & Roosevelt! Boat to the public access and stroll into Outing. Very private & tucked away yet close to area conveniences!

Additional Details:

Year Built	1978
Lot Acres	13
Lot Dimensions	172x576x121x37x1257
Garage Stalls	6
School District	118
Taxes	\$2,658
Taxes with Assessments	\$2,744
Tax Year	2026

Additional Features:

Fuel: Electric **Heat:** Forced Air

Driving Directions:

Hwy 6 into Outing, go east on County Rd 58 to S Lake Lawrence Rd, right follow around the lake to the property. IF your GPS suggests using Berry Rd off Hwy 6, ignore it and use the directions above!



Listed By:
RE/MAX Results

Affinity Real Estate Inc. participates in the Regional Multiple Listing Service of Minnesota, Inc Broker Reciprocity (sm) program, allowing us to display other broker's listings on our website. All properties are subject to prior sale, change or withdrawal.



Call Affinity Real Estate

218-237-3333

info@affinityrealestate.com



Affinity Real Estate - 600 Park Avenue South - Park Rapids MN 56470



website: www.AffinityRealEstate.com | email: info@affinityrealestate.com | office: 218-237-3333 | fax: 218-237-3377

Affinity
REAL ESTATE INC

\$675,000
MLS 7076392 Lake Home
280 Lake Lawrence Road
Outing MN 56662



website: www.AffinityRealEstate.com | email: info@affinityrealestate.com | office: 218-237-3333 | fax:218-237-3377



\$675,000
MLS 7076392 Lake Home
280 Lake Lawrence Road
Outing MN 56662



website: www.AffinityRealEstate.com | email: info@affinityrealestate.com | office: 218-237-3333 | fax:218-237-3377



\$675,000
MLS 7076392 Lake Home
280 Lake Lawrence Road
Outing MN 56662



website: www.AffinityRealEstate.com | email: info@affinityrealestate.com | office: 218-237-3333 | fax:218-237-3377



\$675,000
MLS 7076392 Lake Home
280 Lake Lawrence Road
Outing MN 56662



website: www.AffinityRealEstate.com | email: info@affinityrealestate.com | office: 218-237-3333 | fax:218-237-3377

Affinity
REAL ESTATE INC

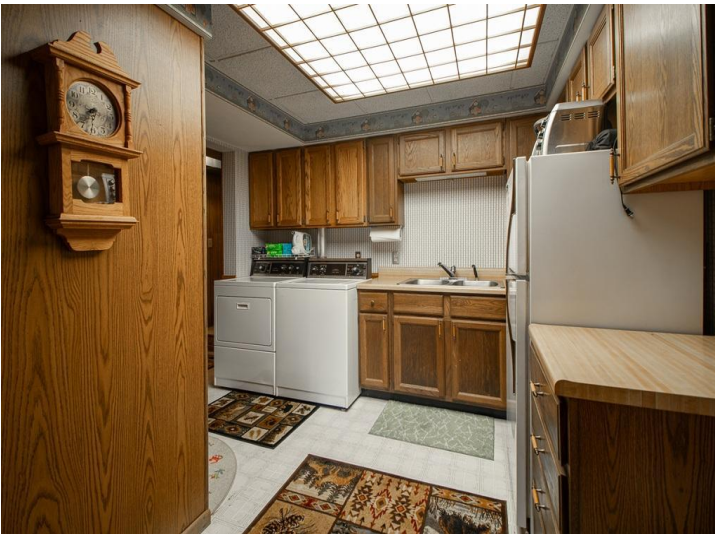
\$675,000
MLS 7076392 Lake Home
280 Lake Lawrence Road
Outing MN 56662



website: www.AffinityRealEstate.com | email: info@affinityrealestate.com | office: 218-237-3333 | fax: 218-237-3377

Affinity
REAL ESTATE INC

\$675,000
MLS 7076392 Lake Home
280 Lake Lawrence Road
Outing MN 56662



website: www.AffinityRealEstate.com | email: info@affinityrealestate.com | office: 218-237-3333 | fax:218-237-3377

Affinity
REAL ESTATE INC

\$675,000
MLS 7076392 Lake Home
280 Lake Lawrence Road
Outing MN 56662



website: www.AffinityRealEstate.com | email: info@affinityrealestate.com | office: 218-237-3333 | fax:218-237-3377



\$675,000
MLS 7076392 Lake Home
280 Lake Lawrence Road
Outing MN 56662