

MLS 7076394 Land

\$150,000

312.8 Acres
Raw Land

TBD Hwy 59
Mahanomen MN 56557

Status: Active

Description:

This property has great hunting potential. A tree line that over looks a native plant field to a lower thicket. There is a pond in the back for water fowl hunting. The field provides habitat for pheasants and other birds. The entire 300+ acres are enrolled in both WRP & RIM. You can put a stand in the trees, ground blinds anywhere and drive a 4 wheeler or truck to access different parts of the land. This property can be leased for hunting but can't be grazed, hayed or mowed. Deer sign is quite abundant. You are allowed to have up to 3 food plots with a total size not to exceed 5 acres. The time is now to prepare for this falls hunting. Check it out.

Additional Details:

Lot Acres	312.8
Lot Dimensions	Irregular
School District	432
Taxes	\$1,120
Taxes with Assessments	\$1,120
Tax Year	2024

Additional Features:

Driving Directions:

From Mahanomen about 1.6 Miles north to sign on the right.



Listed By:
Timber Ghost Realty, LLC

Affinity Real Estate Inc. participates in the Regional Multiple Listing Service of Minnesota, Inc Broker Reciprocity (sm) program, allowing us to display other broker's listings on our website. All properties are subject to prior sale, change or withdrawal.



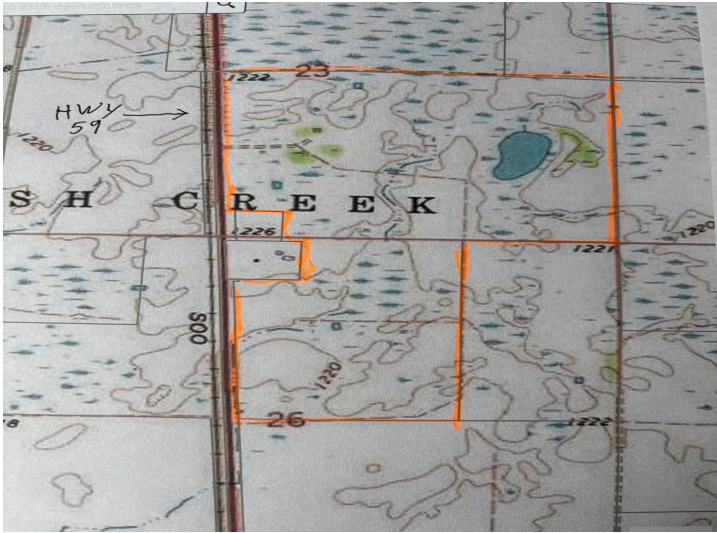
Call Affinity Real Estate

218-237-3333

info@affinityrealestate.com



Affinity Real Estate - 600 Park Avenue South - Park Rapids MN 56470



website: www.AffinityRealEstate.com | email: info@affinityrealestate.com | office: 218-237-3333 | fax:218-237-3377



\$150,000
MLS 7076394 Land
TBD Hwy 59
Mahnomn MN 56557



website: www.AffinityRealEstate.com | email: info@affinityrealestate.com | office: 218-237-3333 | fax:218-237-3377



\$150,000
MLS 7076394 Land
TBD Hwy 59
Mahnomen MN 56557



website: www.AffinityRealEstate.com | email: info@affinityrealestate.com | office: 218-237-3333 | fax:218-237-3377



\$150,000
MLS 7076394 Land
TBD Hwy 59
Mahnomon MN 56557