



MLS 7076459 Residential

\$155,000

1,320 sq ft
4 bedrooms
2 baths

312 Kilburn Street
Bertha MN 56437

Status: Coming Soon

Description:

Beautiful 4 bedroom, 2 bathroom home on a corner lot with 2 stall insulated garage. Exterior is maintenance free cement board, brand new shingles, gutters and fascia done July 2025, newer windows and new composite deck. The main level has front porch with windows all around, living room and dining room with high ceilings both freshly painted, kitchen with extra storage and sliding door leading out to the deck, full bathroom, bedroom and laundry in the side porch. There are also washer and dryer hook ups in the basement. The upper level has 3 more bedrooms with hardwood floors and a 3/4 bathroom. The large yard is beautifully landscaped and has back alley access. Open for showings Tuesday May 26th! Book your showing!

Additional Details:

Year Built	1920
Lot Acres	0.282
Lot Dimensions	70x140x100x137
Garage Stalls	2
School District	786
Taxes	\$1,600
Taxes with Assessments	\$1,948
Tax Year	2026

Additional Features:

Basement: Block, Crawl Space, Full, Storage Space, Unfinished **Fuel:** Natural Gas **Garage:** 2 **Heat:** Forced Air **Sewer:** City Sewer/Connected **Water:** City Water/Connected **Air Conditioning:** Central Air

Driving Directions:

Driving North Hwy 71, in Berth turn right on to 2nd St NW and then left on Meadow Ave NW. Home is on the corner of Meadow Ave NW and Kilburn St NW.



Listed By:
East-West Realty of Long Prairie, Inc.

Affinity Real Estate Inc. participates in the Regional Multiple Listing Service of Minnesota, Inc Broker Reciprocity (sm) program, allowing us to display other broker's listings on our website. All properties are subject to prior sale, change or withdrawal.



Call Affinity Real Estate

218-237-3333

info@affinityrealestate.com



Affinity Real Estate - 600 Park Avenue South - Park Rapids MN 56470



website: www.AffinityRealEstate.com | email: info@affinityrealestate.com | office: 218-237-3333 | fax:218-237-3377



\$155,000
MLS 7076459 Residential
312 Kilburn Street
Bertha MN 56437



website: www.AffinityRealEstate.com | email: info@affinityrealestate.com | office: 218-237-3333 | fax: 218-237-3377

Affinity
REAL ESTATE INC

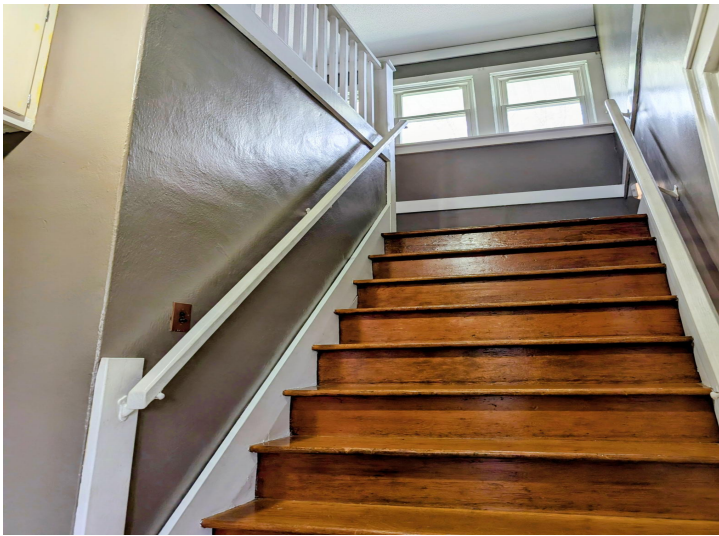
\$155,000
MLS 7076459 Residential
312 Kilburn Street
Bertha MN 56437



website: www.AffinityRealEstate.com | email: info@affinityrealestate.com | office: 218-237-3333 | fax: 218-237-3377

Affinity
REAL ESTATE INC

\$155,000
MLS 7076459 Residential
312 Kilburn Street
Bertha MN 56437



website: www.AffinityRealEstate.com | email: info@affinityrealestate.com | office: 218-237-3333 | fax:218-237-3377

Affinity
REAL ESTATE INC

\$155,000
MLS 7076459 Residential
312 Kilburn Street
Bertha MN 56437



website: www.AffinityRealEstate.com | email: info@affinityrealestate.com | office: 218-237-3333 | fax:218-237-3377

Affinity
REAL ESTATE INC

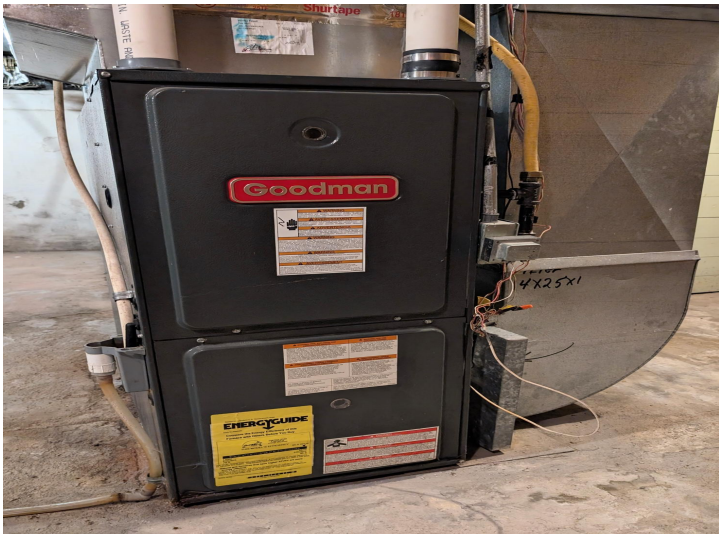
\$155,000
MLS 7076459 Residential
312 Kilburn Street
Bertha MN 56437



website: www.AffinityRealEstate.com | email: info@affinityrealestate.com | office: 218-237-3333 | fax:218-237-3377

Affinity
REAL ESTATE INC

\$155,000
MLS 7076459 Residential
312 Kilburn Street
Bertha MN 56437



website: www.AffinityRealEstate.com | email: info@affinityrealestate.com | office: 218-237-3333 | fax: 218-237-3377

Affinity
REAL ESTATE INC

\$155,000
MLS 7076459 Residential
312 Kilburn Street
Bertha MN 56437



website: www.AffinityRealEstate.com | email: info@affinityrealestate.com | office: 218-237-3333 | fax: 218-237-3377

Affinity
REAL ESTATE INC

\$155,000
MLS 7076459 Residential
312 Kilburn Street
Bertha MN 56437



website: www.AffinityRealEstate.com | email: info@affinityrealestate.com | office: 218-237-3333 | fax:218-237-3377



\$155,000
MLS 7076459 Residential
312 Kilburn Street
Bertha MN 56437