



MLS 7076541 Lake Land

\$124,900

Description:

Rare chance to own a buildable lake lot with Hay Lake frontage and walk-on access to Ham Lake across the road. This 50x215 lot gives you 50 feet of shoreline on Hay Lake. With no public access, this is a great spot for fishing, duck hunting, and enjoying lake life without the boat traffic. Across the road, Ham Lake offers walk-on access, sandy shoreline, and sunset views. The hard work has already been started. The lot has been surveyed, electric is being brought in, and Hubbard County has approved a house design, septic design, and well location. The approved design shows a 30x30 2-bedroom, 2-bath home. A rare Hubbard County lake opportunity with frontage, extra lake access, and major build steps already in place.

Additional Details:

Lot Acres	1.45
Lot Dimensions	50x1287x60x1252
School District	113
Taxes	\$192
Taxes with Assessments	\$192
Tax Year	2025

Additional Features:

Driving Directions:

Hwy 64 to 190th St to Land



Listed By:
Coldwell Banker Realty

Affinity Real Estate Inc. participates in the Regional Multiple Listing Service of Minnesota, Inc Broker Reciprocity (sm) program, allowing us to display other broker's listings on our website. All properties are subject to prior sale, change or withdrawal.



Call Affinity Real Estate

218-237-3333

info@affinityrealestate.com



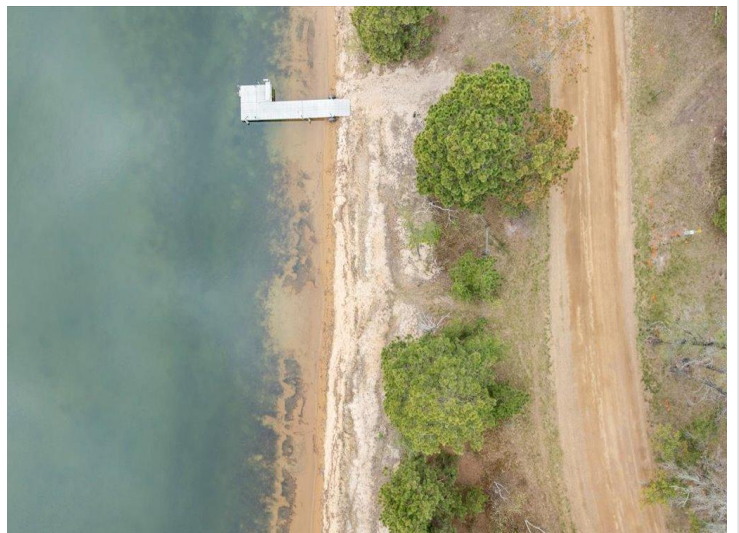
Affinity Real Estate - 600 Park Avenue South - Park Rapids MN 56470



website: www.AffinityRealEstate.com | email: info@affinityrealestate.com | office: 218-237-3333 | fax:218-237-3377



\$124,900
MLS 7076541 Lake Land
28688 190th Street
Akeley MN 56433



website: www.AffinityRealEstate.com | email: info@affinityrealestate.com | office: 218-237-3333 | fax:218-237-3377



\$124,900
MLS 7076541 Lake Land
28688 190th Street
Akeley MN 56433

