



MLS 7076542 Land

**\$79,900**

1.51 Acres  
Finished Lot(s)

TBD Lot 5 BLK 3 Chainview Court  
Alexandria MN 56308

Status: Active



**Description:**

Welcome to Chainview Estates – a beautiful new development in the highly desirable Alexandria Lakes Area! Nestled within a peaceful cul-de-sac setting, Chainview Estates offers spacious, level lots designed to provide privacy, a welcoming neighborhood feel, and room to create the home you have always envisioned.

Enjoy the convenience of being just a short drive to local restaurants, shopping, entertainment, and the many amenities the Alexandria area is known for. Located near Lake Carlos, outdoor recreation is right at your fingertips with boating, fishing, lake activities, trails, and year-round enjoyment of Minnesota’s lake country lifestyle.

The cul-de-sac design creates a quieter setting while maintaining easy access to main roads and nearby attractions. The generous lot sizes provide flexibility for home design, outdoor living spaces, additional garage options, and more. Whether you are planning your dream home, a getaway near the lakes, or looking for an opportunity in one of Alexandria’s growing areas, Chainview Estates offers exceptional potential.

**Additional Details:**

Lot Acres	1.51
Lot Dimensions	60 357 383 324
School District	206
Taxes	(unreported)
Taxes with Assessments	(unreported)
Tax Year	2026

**Additional Features:**

**Driving Directions:**

From Broadway, Right on 3rd Ave E, Left on Nokomis, Left on CR 42, Right on CR 11, Left on Chainview Drive NW, Left on Chainview Court NW.



Listed By:  
Counselor Realty Inc of Alex

Affinity Real Estate Inc. participates in the Regional Multiple Listing Service of Minnesota, Inc Broker Reciprocity (sm) program, allowing us to display other broker’s listings on our website. All properties are subject to prior sale, change or withdrawal.



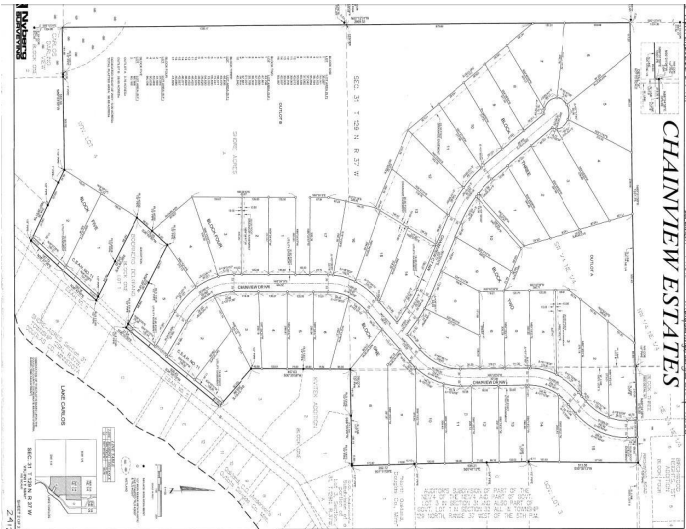
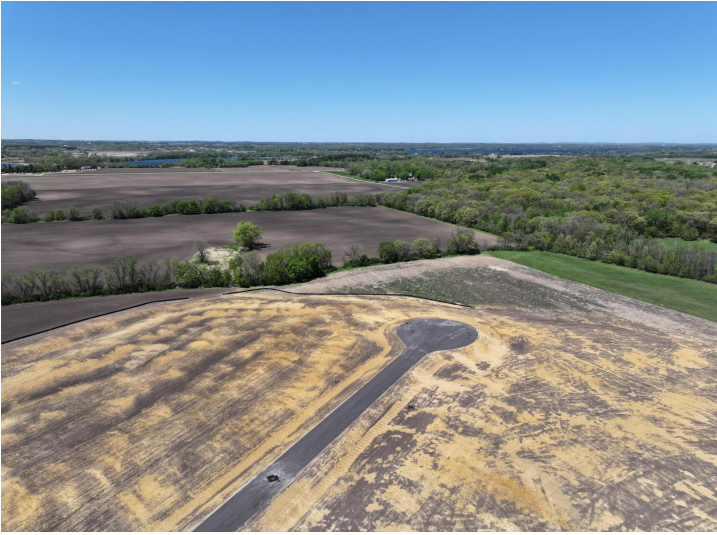
Call Affinity Real Estate

**218-237-3333**

[info@affinityrealestate.com](mailto:info@affinityrealestate.com)



Affinity Real Estate - 600 Park Avenue South - Park Rapids MN 56470



website: [www.AffinityRealEstate.com](http://www.AffinityRealEstate.com) | email: [info@affinityrealestate.com](mailto:info@affinityrealestate.com) | office: 218-237-3333 | fax: 218-237-3377



**\$79,900**  
 MLS 7076542 Land  
 TBD Lot 5 BLK 3 Chainview  
 Court  
 Alexandria MN 56308



website: [www.AffinityRealEstate.com](http://www.AffinityRealEstate.com) | email: [info@affinityrealestate.com](mailto:info@affinityrealestate.com) | office: 218-237-3333 | fax:218-237-3377



**\$79,900**  
MLS 7076542 Land  
TBD Lot 5 BLK 3 Chainview  
Court  
Alexandria MN 56308