



MLS 7076575 Land

\$99,900

1.52 Acres
Finished Lot(s)

TBD Lot 1 BLK 5 County Road 11
Alexandria MN 56308

Status: Active

Description:

Welcome to Chainview Estates – a new development in the sought-after Alexandria Lakes Area offering space, flexibility, and opportunity! These large, level lots provide the perfect setting to create a property that fits your lifestyle. Whether you are planning your dream home, extra storage, hobby space, or room for recreational toys, the possibilities are wide open.

Enjoy the convenience of being just a short drive to restaurants, shopping, entertainment, and everything the Alexandria area has to offer. Located near Lake Carlos, you will have easy access to boating, fishing, trails, and year-round lake country recreation.

With added flexibility, this lot allows room to think beyond the traditional build. Construct your home, add a shed for storage, build a shouse, or create the combination that best fits your needs. Bring your ideas and enjoy the freedom to design a property with space to work, play, store, and relax.

Additional Details:

Lot Acres	1.52
Lot Dimensions	191 330 191 358
School District	206
Taxes	(unreported)
Taxes with Assessments	(unreported)
Tax Year	2026

Additional Features:

Driving Directions:

From Broadway, Right on 3rd Ave E, Left on Nokomis, Left on CR 42, Right on CR 11 to sign on Left



Listed By:
Counselor Realty Inc of Alex

Affinity Real Estate Inc. participates in the Regional Multiple Listing Service of Minnesota, Inc Broker Reciprocity (sm) program, allowing us to display other broker's listings on our website. All properties are subject to prior sale, change or withdrawal.



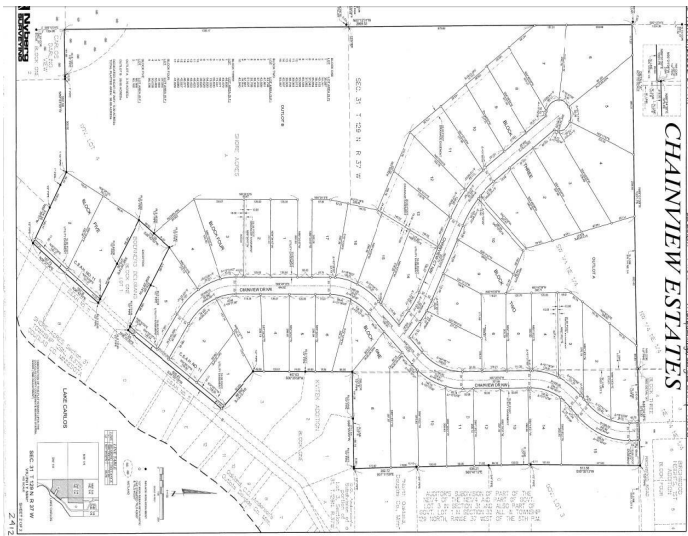
Call Affinity Real Estate

218-237-3333

info@affinityrealestate.com



Affinity Real Estate - 600 Park Avenue South - Park Rapids MN 56470



website: www.AffinityRealEstate.com | email: info@affinityrealestate.com | office: 218-237-3333 | fax:218-237-3377



\$99,900
MLS 7076575 Land
TBD Lot 1 BLK 5 County
Road 11
Alexandria MN 56308