



MLS 7076708 Residential

\$289,000

2,300 sq ft
4 bedrooms
2 baths

720 6th Drive
Perham MN 56573

Status: Active

Description:

Welcome to this beautifully maintained 4-bed, 2-bath home on a spacious corner lot in sought-after Westwind. This inviting one-story features hardwood floors throughout the main level and a functional layout. Main floor offers 2 bedrooms, full bath, formal dining, and kitchen with newer appliances and gas range. Main-floor laundry hookups add flexibility.

Finished lower level offers 2 additional bedrooms and a full bath. One oversized 24x12 room adds flexibility for a family room, office, or guest suite.

Notable updates include a furnace replaced in September and central air. Exterior features vinyl siding, attached 2-stall garage, and a spacious yard. Conveniently located near parks, walking paths, golf, and amenities, this move-in ready home offers comfort and value.

Additional Details:

Year Built	1995
Lot Acres	0.332
Lot Dimensions	90x133x141x114
Garage Stalls	2
School District	549
Taxes	\$2,330
Taxes with Assessments	\$2,330
Tax Year	2025

Additional Features:

Fuel: Electric, Natural Gas **Heat:** Baseboard, Forced Air

Driving Directions:

From Main Street Perham, North on CO HWY 51 to 9th ST NW, west on 9th for 2 blocks to 6th Avenue NW, north on 6th. Located on the intersection of 6th Avenue NW and 6th Drive NW.



Listed By:
Keller Williams Classic Rlty N

Affinity Real Estate Inc. participates in the Regional Multiple Listing Service of Minnesota, Inc Broker Reciprocity (sm) program, allowing us to display other broker's listings on our website. All properties are subject to prior sale, change or withdrawal.



Call Affinity Real Estate

218-237-3333

info@affinityrealestate.com



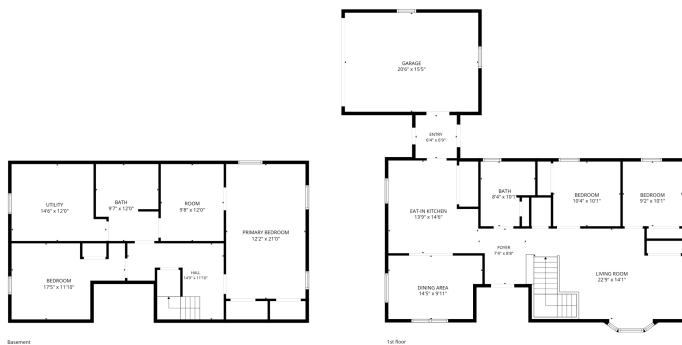
Affinity Real Estate - 600 Park Avenue South - Park Rapids MN 56470



website: www.AffinityRealEstate.com | email: info@affinityrealestate.com | office: 218-237-3333 | fax: 218-237-3377

Affinity
REAL ESTATE INC

\$289,000
MLS 7076708 Residential
720 6th Drive
Perham MN 56573



FLOOR PLAN CREATED BY CURIOUS APP. MEASUREMENTS DEEMED HIGHLY RELIABLE BUT NOT GUARANTEED.



website: www.AffinityRealEstate.com | email: info@affinityrealestate.com | office: 218-237-3333 | fax: 218-237-3377



\$289,000
 MLS 7076708 Residential
 720 6th Drive
 Perham MN 56573



website: www.AffinityRealEstate.com | email: info@affinityrealestate.com | office: 218-237-3333 | fax: 218-237-3377

Affinity
REAL ESTATE INC

\$289,000
MLS 7076708 Residential
720 6th Drive
Perham MN 56573



website: www.AffinityRealEstate.com | email: info@affinityrealestate.com | office: 218-237-3333 | fax:218-237-3377



\$289,000
MLS 7076708 Residential
720 6th Drive
Perham MN 56573



website: www.AffinityRealEstate.com | email: info@affinityrealestate.com | office: 218-237-3333 | fax:218-237-3377

Affinity
REAL ESTATE INC

\$289,000
MLS 7076708 Residential
720 6th Drive
Perham MN 56573



website: www.AffinityRealEstate.com | email: info@affinityrealestate.com | office: 218-237-3333 | fax:218-237-3377

Affinity
REAL ESTATE INC

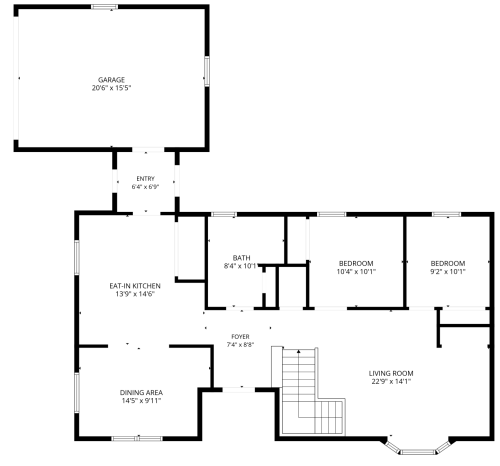
\$289,000
MLS 7076708 Residential
720 6th Drive
Perham MN 56573



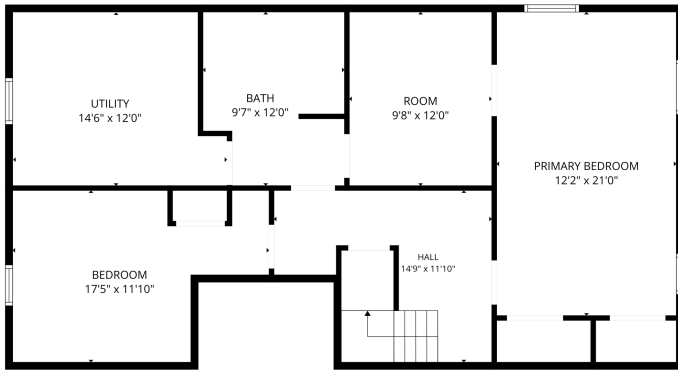
website: www.AffinityRealEstate.com | email: info@affinityrealestate.com | office: 218-237-3333 | fax: 218-237-3377

Affinity
REAL ESTATE INC

\$289,000
MLS 7076708 Residential
720 6th Drive
Perham MN 56573



FLOOR PLAN CREATED BY CUBICASA APP. MEASUREMENTS DEEMED HIGHLY RELIABLE BUT NOT GUARANTEED.



FLOOR PLAN CREATED BY CUBICASA APP. MEASUREMENTS DEEMED HIGHLY RELIABLE BUT NOT GUARANTEED.



website: www.AffinityRealEstate.com | email: info@affinityrealestate.com | office: 218-237-3333 | fax: 218-237-3377



\$289,000
 MLS 7076708 Residential
 720 6th Drive
 Perham MN 56573



website: www.AffinityRealEstate.com | email: info@affinityrealestate.com | office: 218-237-3333 | fax:218-237-3377



\$289,000
MLS 7076708 Residential
720 6th Drive
Perham MN 56573