



MLS 7076747 Residential

\$399,900

1,517 sq ft
3 bedrooms
2 baths

1726 Donway Place
Alexandria MN 56308

Status: Active

Description:

Welcome to Geneva Estates North, where peaceful living meets everyday convenience. This under construction home offers bright, open spaces filled with warmth and charm. Featuring 3 bedrooms and 2 bathrooms, this thoughtfully crafted one-level home combines comfort, style, and functionality.

The sun-filled open-concept layout showcases a modern kitchen complete with granite countertops, stainless steel appliances, soft-close cabinetry, and a spacious design perfect for entertaining. Throughout the home, you'll find durable luxury vinyl plank flooring and impressive 9-foot ceilings that enhance the airy feel.

Retreat to the private owner's suite featuring a walk-in closet and a well-appointed en-suite bath. Additional highlights include a functional mudroom, dedicated laundry area, and abundant storage to simplify everyday living.


Ideally located just minutes from downtown Alexandria, the Central Lakes Trail, Geneva Golf Club, and the area's beautiful lakes, this home offers the perfect balance of relaxation, recreation, and accessibility. Estimated completion mid-August.

Additional Details:

Year Built	2026
Lot Acres	0.1
Lot Dimensions	62x71
Garage Stalls	2
School District	206
Taxes	\$286
Taxes with Assessments	\$286
Tax Year	2026

Additional Features:

Basement: None **Fuel:** Natural Gas **Garage:** 2 **Heat:** Forced Air, Fireplace(s) **Sewer:** City Sewer/Connected **Water:** Shared System **Air Conditioning:** Central Air

 Listed By:
Exp Realty
73, R on E Lake Geneva Road, L on Donway Drive, R on Donway Place, Model on Left.

Affinity Real Estate Inc. participates in the Regional Multiple Listing Service of Minnesota, Inc Broker Reciprocity (sm) program, allowing us to display other broker's listings on our website. All properties are subject to prior sale, change or withdrawal.



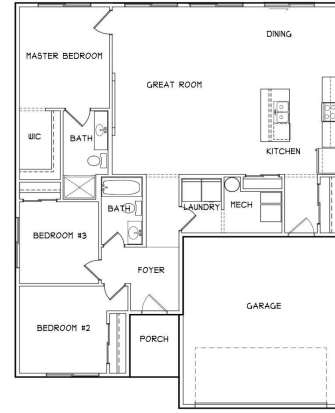
Call Affinity Real Estate

218-237-3333

info@affinityrealestate.com



Affinity Real Estate - 600 Park Avenue South - Park Rapids MN 56470



website: www.AffinityRealEstate.com | email: info@affinityrealestate.com | office: 218-237-3333 | fax: 218-237-3377



\$399,900
MLS 7076747 Residential
1726 Donway Place
Alexandria MN 56308



website: www.AffinityRealEstate.com | email: info@affinityrealestate.com | office: 218-237-3333 | fax:218-237-3377



\$399,900
MLS 7076747 Residential
1726 Donway Place
Alexandria MN 56308



website: www.AffinityRealEstate.com | email: info@affinityrealestate.com | office: 218-237-3333 | fax: 218-237-3377

Affinity
REAL ESTATE INC

\$399,900
MLS 7076747 Residential
1726 Donway Place
Alexandria MN 56308



website: www.AffinityRealEstate.com | email: info@affinityrealestate.com | office: 218-237-3333 | fax:218-237-3377



\$399,900
MLS 7076747 Residential
1726 Donway Place
Alexandria MN 56308



website: www.AffinityRealEstate.com | email: info@affinityrealestate.com | office: 218-237-3333 | fax:218-237-3377



\$399,900
MLS 7076747 Residential
1726 Donway Place
Alexandria MN 56308