



MLS 7076791 Lake Home

\$850,000

910 sq ft
3 bedrooms
2 baths

36607 Harbor Trail
Pequot Lakes MN 56442

Waterfront: Rush-Hen

Status: Coming Soon

Description:

Experience the timeless charm of lake life on the Whitefish Chain with this rare Rush Lake retreat in Crosslake. Set on 1.81 private acres with an incredible 1,096 feet of shoreline and your own peninsula, this property is all about creating unforgettable memories at the lake. The classic 2-bedroom, 1 full bathroom cabin is filled with nostalgic Northwoods character, featuring cedar interiors, vaulted pine ceilings, a stunning stone fireplace, and lakeside windows that bring the outdoors in. A separate seasonal lakeside boathouse includes a bunkroom, ¾ bathroom, and its own separate septic system—offering the perfect space for guests, entertaining, or relaxing after a day on the water. Spend your days boating the chain, swimming, fishing, and gathering around the fire after sunset. Mature pines, panoramic views, and exceptional privacy create the peaceful Up North lifestyle buyers dream about on the Whitefish Chain.

Additional Details:

Year Built	1940
Lot Acres	1.81
Lot Dimensions	270 x 191 x irregular
Garage Stalls	2
School District	186
Taxes	\$4,347
Taxes with Assessments	\$4,372
Tax Year	2026

Additional Features:

Basement: Block, Daylight/Lookout Windows **Fuel:** Electric **Garage:** 2 **Heat:** Baseboard, Fireplace(s) **Sewer:** Septic System Compliant - Yes **Water:** Drilled **Air Conditioning:** Window Unit(s)

Driving Directions:

From Crosslake, head North on CR-66, Left on CR-16, Right on Harbor Lane, Right on Harbor Trl., property on Left (GPS will show Crosslake)



Listed By:
Edina Realty, Inc.

Affinity Real Estate Inc. participates in the Regional Multiple Listing Service of Minnesota, Inc Broker Reciprocity (sm) program, allowing us to display other broker's listings on our website. All properties are subject to prior sale, change or withdrawal.



Call Affinity Real Estate

218-237-3333

info@affinityrealestate.com



Affinity Real Estate - 600 Park Avenue South - Park Rapids MN 56470



website: www.AffinityRealEstate.com | email: info@affinityrealestate.com | office: 218-237-3333 | fax:218-237-3377



\$850,000
MLS 7076791 Lake Home
36607 Harbor Trail
Pequot Lakes MN 56442



website: www.AffinityRealEstate.com | email: info@affinityrealestate.com | office: 218-237-3333 | fax: 218-237-3377

Affinity
REAL ESTATE INC

\$850,000
MLS 7076791 Lake Home
36607 Harbor Trail
Pequot Lakes MN 56442



website: www.AffinityRealEstate.com | email: info@affinityrealestate.com | office: 218-237-3333 | fax: 218-237-3377

Affinity
REAL ESTATE INC

\$850,000
MLS 7076791 Lake Home
36607 Harbor Trail
Pequot Lakes MN 56442



website: www.AffinityRealEstate.com | email: info@affinityrealestate.com | office: 218-237-3333 | fax:218-237-3377

Affinity
REAL ESTATE INC

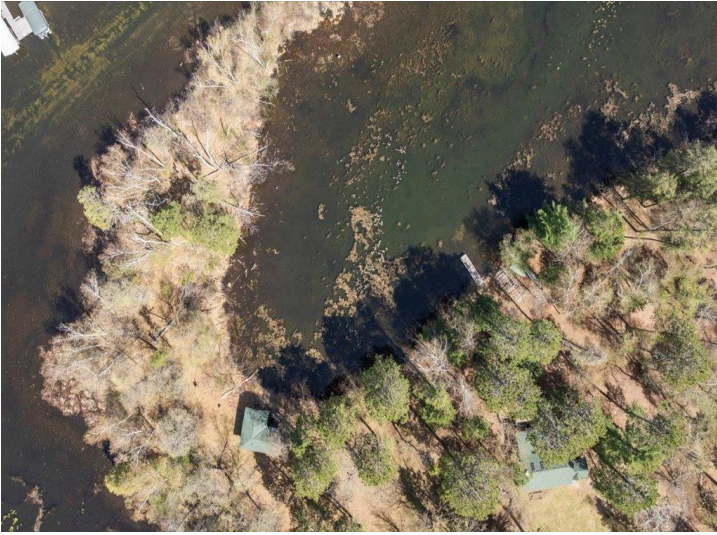
\$850,000
MLS 7076791 Lake Home
36607 Harbor Trail
Pequot Lakes MN 56442



website: www.AffinityRealEstate.com | email: info@affinityrealestate.com | office: 218-237-3333 | fax: 218-237-3377

Affinity
REAL ESTATE INC

\$850,000
MLS 7076791 Lake Home
36607 Harbor Trail
Pequot Lakes MN 56442



website: www.AffinityRealEstate.com | email: info@affinityrealestate.com | office: 218-237-3333 | fax:218-237-3377

Affinity
REAL ESTATE INC

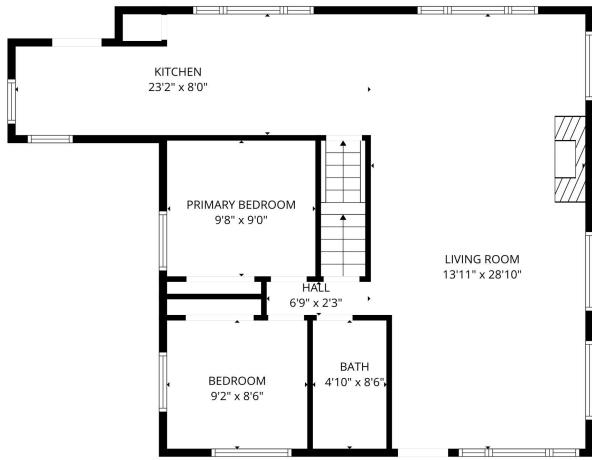
\$850,000
MLS 7076791 Lake Home
36607 Harbor Trail
Pequot Lakes MN 56442



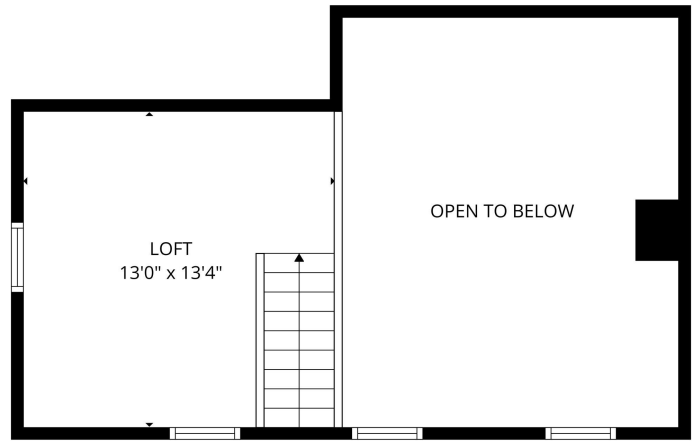
website: www.AffinityRealEstate.com | email: info@affinityrealestate.com | office: 218-237-3333 | fax:218-237-3377

Affinity
REAL ESTATE INC

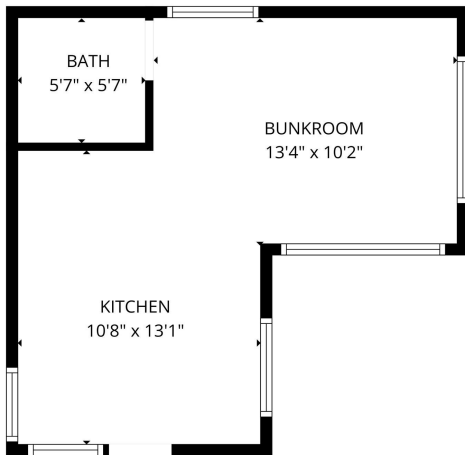
\$850,000
MLS 7076791 Lake Home
36607 Harbor Trail
Pequot Lakes MN 56442



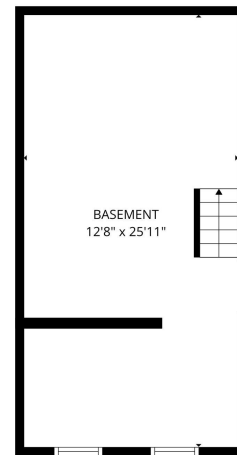
FLOOR PLAN CREATED BY CUBICASA APP. MEASUREMENTS DEEMED HIGHLY RELIABLE BUT NOT GUARANTEED.



FLOOR PLAN CREATED BY CUBICASA APP. MEASUREMENTS DEEMED HIGHLY RELIABLE BUT NOT GUARANTEED.



FLOOR PLAN CREATED BY CUBICASA APP. MEASUREMENTS DEEMED HIGHLY RELIABLE BUT NOT GUARANTEED.



FLOOR PLAN CREATED BY CUBICASA APP. MEASUREMENTS DEEMED HIGHLY RELIABLE BUT NOT GUARANTEED.

website: www.AffinityRealEstate.com | email: info@affinityrealestate.com | office: 218-237-3333 | fax: 218-237-3377



\$850,000
 MLS 7076791 Lake Home
 36607 Harbor Trail
 Pequot Lakes MN 56442