



MLS 7077013 Residential

\$628,455

1,976 sq ft
3 bedrooms
2 baths

3757 Sanctuary Path
Brainerd MN 56401

Status: Active

Description:

Welcome to Sanctuary Ridge! This 1,976 sq ft haven offers maintenance-free living at its finest. Enjoy 3 bedrooms and 2 bathrooms, including a private owner's suite. Relax in the stunning sunroom overlooking the serene Gull River, or utilize the spacious attached 3-car garage. Located just moments from the vibrant amenities of Brainerd and Baxter, you're also a short distance from premier lakes and world-class golf. Your perfect blend of nature and convenience awaits!

Additional Details:

Year Built	2026
Lot Acres	0.11
Lot Dimensions	70x70x70x70
Garage Stalls	3
School District	181
Taxes	\$76
Taxes with Assessments	\$76
Tax Year	2026

Additional Features:

Basement: None **Fuel:** Natural Gas **Garage:** 3 **Heat:** Forced Air **Sewer:** Private Sewer, Shared Septic, Tank with Drainage Field **Water:** 4-Inch Submersible, Drilled, Private, Well **Air Conditioning:** Central Air

Driving Directions:

From Baxter, west on CR 77, North on Sanctuary Way, stay left to Sanctuary Lane, left on Sanctuary Path



Listed By:
Positive Realty

Affinity Real Estate Inc. participates in the Regional Multiple Listing Service of Minnesota, Inc Broker Reciprocity (sm) program, allowing us to display other broker's listings on our website. All properties are subject to prior sale, change or withdrawal.



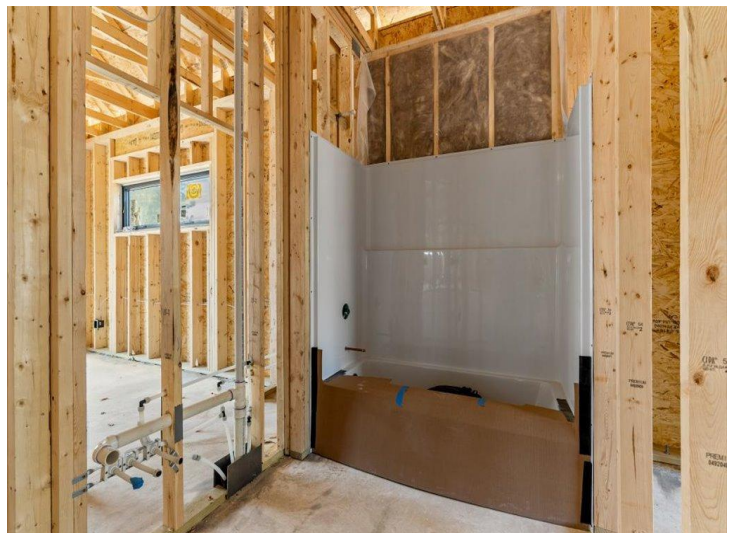
Call Affinity Real Estate

218-237-3333

info@affinityrealestate.com



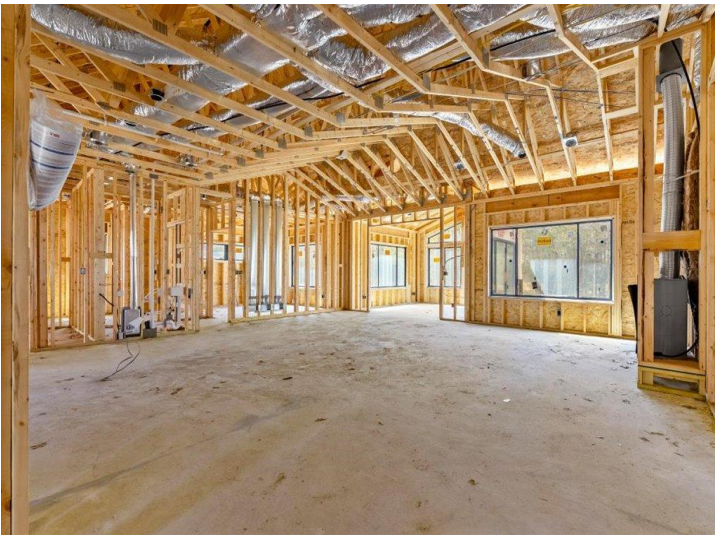
Affinity Real Estate - 600 Park Avenue South - Park Rapids MN 56470



website: www.AffinityRealEstate.com | email: info@affinityrealestate.com | office: 218-237-3333 | fax:218-237-3377

Affinity
REAL ESTATE INC

\$628,455
MLS 7077013 Residential
3757 Sanctuary Path
Brainerd MN 56401



website: www.AffinityRealEstate.com | email: info@affinityrealestate.com | office: 218-237-3333 | fax:218-237-3377

Affinity
REAL ESTATE INC

\$628,455
MLS 7077013 Residential
3757 Sanctuary Path
Brainerd MN 56401



website: www.AffinityRealEstate.com | email: info@affinityrealestate.com | office: 218-237-3333 | fax: 218-237-3377



\$628,455
 MLS 7077013 Residential
 3757 Sanctuary Path
 Brainerd MN 56401