



MLS 7077039 Residential

\$344,900

2,508 sq ft
6 bedrooms
4 baths

450 Murray Avenue
Pine River MN 56474

Status: Active

Description:

Own the home you want and let the extra rental space cover the payment. This rare Pine River property offers the feel and function of a spacious home with the added benefit of multiple income-producing living areas, creating a unique opportunity for buyers seeking a primary residence with huge built-in rental potential. Whether you are looking for room for extended family, a live-in investment strategy, or a creative way to offset monthly housing costs, this property delivers flexibility that is hard to find in today's market. Set on a large in-town lot with a private feel, the property is conveniently located near schools, shopping, dining, and everyday amenities. Recent improvements include a new deck, new kitchen flooring, remote-controlled ceiling fans, and more than \$15,000 in recent updates, giving the property a move-in ready feel while still offering room to personalize over time. Additional value includes a 2-stall garage, storage, and a roof warranty. A rare opportunity to own a Pine River home that offers both comfortable everyday living and the potential for rental income in one versatile property.

Additional Details:


Year Built	1972
Lot Acres	1.4
Lot Dimensions	irrx326x200x270
Garage Stalls	2
School District	2174
Taxes	\$4,214
Taxes with Assessments	\$4,280
Tax Year	2025

Additional Features:

Basement: Block, Egress Window(s), Finished, Kitchenette **Fuel:** Electric, Natural Gas **Garage:** 2 **Heat:** Baseboard, Forced Air **Sewer:** City Sewer/Connected **Water:** City Water/Connected **Air Conditioning:** Wall Unit(s)

Driving Directions:

From 371N continue on to a right on Main St. to a right on Murray Ave, property is on the right.



Listed By:
eXp Realty

Affinity Real Estate Inc. participates in the Regional Multiple Listing Service of Minnesota, Inc Broker Reciprocity (sm) program, allowing us to display other broker's listings on our website. All properties are subject to prior sale, change or withdrawal.



Call Affinity Real Estate
218-237-3333
info@affinityrealestate.com

MLS REALTOR AFFINITY

Affinity Real Estate - 600 Park Avenue South - Park Rapids MN 56470



website: www.AffinityRealEstate.com | email: info@affinityrealestate.com | office: 218-237-3333 | fax:218-237-3377



\$344,900
MLS 7077039 Residential
450 Murray Avenue
Pine River MN 56474



website: www.AffinityRealEstate.com | email: info@affinityrealestate.com | office: 218-237-3333 | fax: 218-237-3377

Affinity
REAL ESTATE INC

\$344,900
MLS 7077039 Residential
450 Murray Avenue
Pine River MN 56474



website: www.AffinityRealEstate.com | email: info@affinityrealestate.com | office: 218-237-3333 | fax:218-237-3377

Affinity
REAL ESTATE INC

\$344,900
MLS 7077039 Residential
450 Murray Avenue
Pine River MN 56474



website: www.AffinityRealEstate.com | email: info@affinityrealestate.com | office: 218-237-3333 | fax:218-237-3377

Affinity
REAL ESTATE INC

\$344,900
MLS 7077039 Residential
450 Murray Avenue
Pine River MN 56474



website: www.AffinityRealEstate.com | email: info@affinityrealestate.com | office: 218-237-3333 | fax:218-237-3377



\$344,900
MLS 7077039 Residential
450 Murray Avenue
Pine River MN 56474



website: www.AffinityRealEstate.com | email: info@affinityrealestate.com | office: 218-237-3333 | fax: 218-237-3377

Affinity
REAL ESTATE INC

\$344,900
MLS 7077039 Residential
450 Murray Avenue
Pine River MN 56474



website: www.AffinityRealEstate.com | email: info@affinityrealestate.com | office: 218-237-3333 | fax:218-237-3377

Affinity
REAL ESTATE INC

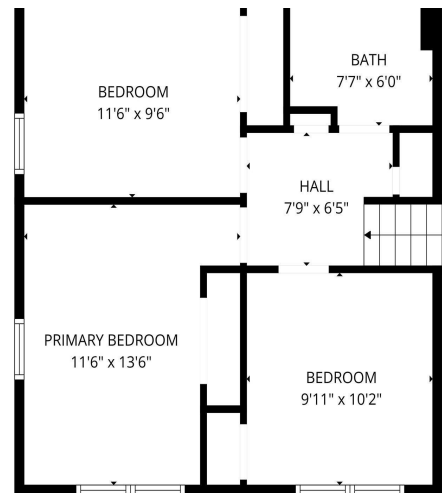
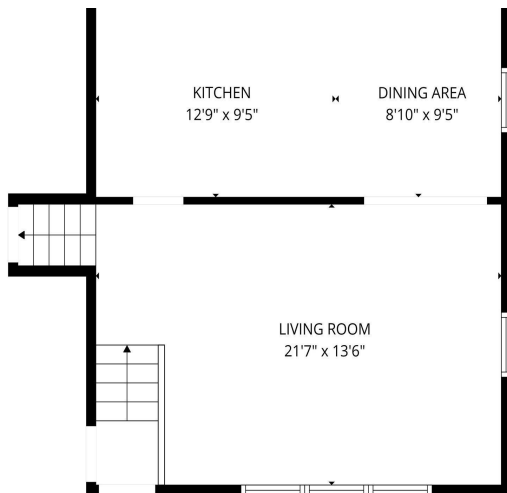
\$344,900
MLS 7077039 Residential
450 Murray Avenue
Pine River MN 56474



website: www.AffinityRealEstate.com | email: info@affinityrealestate.com | office: 218-237-3333 | fax:218-237-3377

Affinity
REAL ESTATE INC

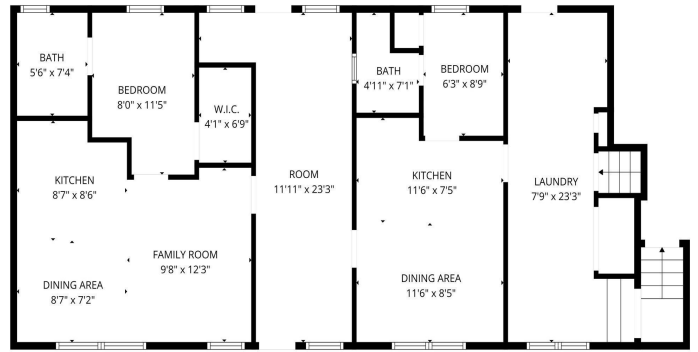
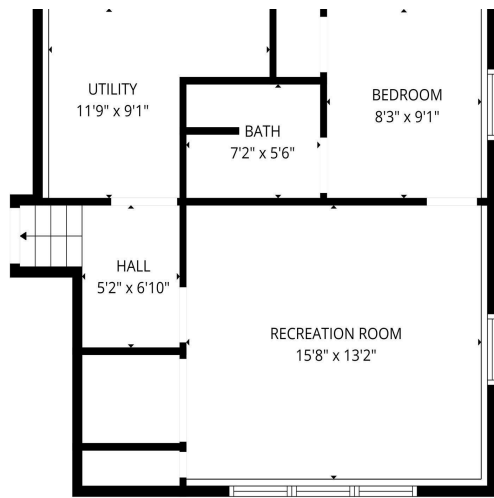
\$344,900
MLS 7077039 Residential
450 Murray Avenue
Pine River MN 56474



website: www.AffinityRealEstate.com | email: info@affinityrealestate.com | office: 218-237-3333 | fax: 218-237-3377



\$344,900
 MLS 7077039 Residential
 450 Murray Avenue
 Pine River MN 56474



website: www.AffinityRealEstate.com | email: info@affinityrealestate.com | office: 218-237-3333 | fax: 218-237-3377



\$344,900
MLS 7077039 Residential
450 Murray Avenue
Pine River MN 56474