



MLS 7077114 Residential

**\$249,900**

1,848 sq ft  
3 bedrooms  
2 baths

702 Washington Avenue  
Park Rapids MN 56470

Status: Active

**Description:**

3 bedroom, 1 3/4 bath home located at 702 Washington Ave South. Many recent updates, attached garage with workshop is heated and finished. Large backyard with alley access and much more!

**Additional Details:**

Year Built	1990
Lot Acres	0.3
Lot Dimensions	95x138x95x138
Garage Stalls	1
School District	309
Taxes	\$2,278
Taxes with Assessments	\$2,278
Tax Year	2026

**Additional Features:**

**Fuel:** Electric, Natural Gas **Heat:** Baseboard, Gravity

**Driving Directions:**

FROM HWY 34 AND HWY 71 GO 8 BLOCKS SOUTH ON HWY 71 TO 8TH STREET. TURN LEFT TO HEAD SOUTH 1 BLOCK TO WASHINGTON AVE. TURN LEFT ON WASHINGTON AND 702 WASHINGTON AVE S IS ON THE RIGHT SIDE.



Listed By:  
Keller Williams Realty Professionals

Affinity Real Estate Inc. participates in the Regional Multiple Listing Service of Minnesota, Inc Broker Reciprocity (sm) program, allowing us to display other broker's listings on our website. All properties are subject to prior sale, change or withdrawal.



Call Affinity Real Estate

**218-237-3333**

[info@affinityrealestate.com](mailto:info@affinityrealestate.com)



Affinity Real Estate - 600 Park Avenue South - Park Rapids MN 56470



website: [www.AffinityRealEstate.com](http://www.AffinityRealEstate.com) | email: [info@affinityrealestate.com](mailto:info@affinityrealestate.com) | office: 218-237-3333 | fax:218-237-3377



**\$249,900**  
MLS 7077114 Residential  
702 Washington Avenue  
Park Rapids MN 56470



website: [www.AffinityRealEstate.com](http://www.AffinityRealEstate.com) | email: [info@affinityrealestate.com](mailto:info@affinityrealestate.com) | office: 218-237-3333 | fax:218-237-3377

**Affinity**  
REAL ESTATE INC

**\$249,900**  
MLS 7077114 Residential  
702 Washington Avenue  
Park Rapids MN 56470



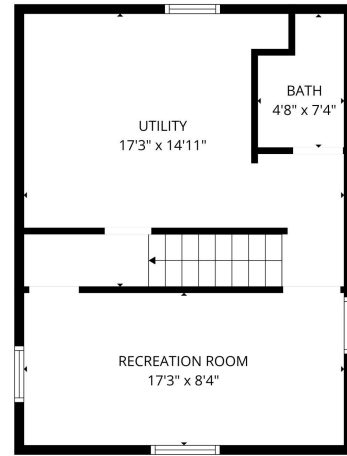
website: [www.AffinityRealEstate.com](http://www.AffinityRealEstate.com) | email: [info@affinityrealestate.com](mailto:info@affinityrealestate.com) | office: 218-237-3333 | fax:218-237-3377



**\$249,900**  
MLS 7077114 Residential  
702 Washington Avenue  
Park Rapids MN 56470



FLOOR PLAN CREATED BY CUBICASA APP. MEASUREMENTS DEEMED HIGHLY RELIABLE BUT NOT GUARANTEED.



FLOOR PLAN CREATED BY CUBICASA APP. MEASUREMENTS DEEMED HIGHLY RELIABLE BUT NOT GUARANTEED.

website: [www.AffinityRealEstate.com](http://www.AffinityRealEstate.com) | email: [info@affinityrealestate.com](mailto:info@affinityrealestate.com) | office: 218-237-3333 | fax: 218-237-3377



**\$249,900**  
 MLS 7077114 Residential  
 702 Washington Avenue  
 Park Rapids MN 56470