



MLS 7077229 Lake Land

**\$319,900**

**Description:**

Rare opportunity to own 22.5 peaceful acres on private Birch Lake with the perfect blend of lakeshore and wooded acreage. Whether you're dreaming of building a cozy cabin getaway or your forever home, this property offers exceptional privacy, natural beauty, and endless possibilities. Enjoy direct access to Birch Lake and the serenity of the surrounding landscape, with hundreds of acres of adjacent public land for hiking, hunting, and outdoor recreation. Conveniently located near popular area destinations including Mille Lacs Lake and Bay Lake. A rare find offering both seclusion and access to some of Minnesota's best lakes and outdoor amenities.

**Additional Details:**

Lot Acres	22.5
Lot Dimensions	1258x902x982x900
School District	8001
Taxes	\$214
Taxes with Assessments	\$214
Tax Year	2026

**Additional Features:**

**Driving Directions:**

From Garrison, go north on 169 to North (left) onto 450th Ave. Turn right to continue north on 450th Ave to 242nd Ln on the left.



Listed By:  
RE/MAX Results - Nisswa

Affinity Real Estate Inc. participates in the Regional Multiple Listing Service of Minnesota, Inc Broker Reciprocity (sm) program, allowing us to display other broker's listings on our website. All properties are subject to prior sale, change or withdrawal.



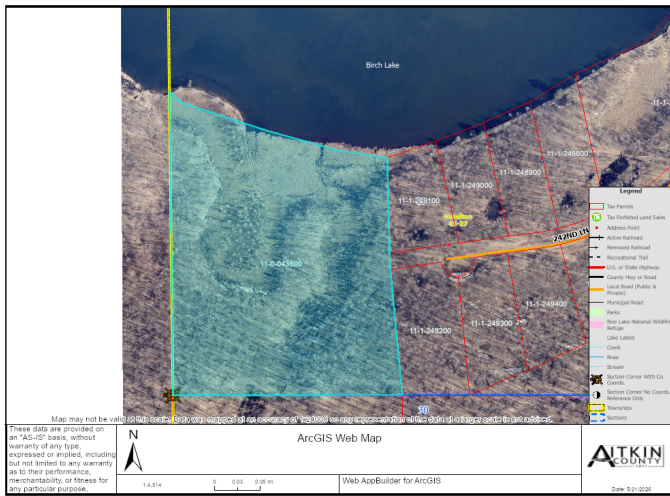
**Call Affinity Real Estate**

**218-237-3333**

**info@affinityrealestate.com**



**Affinity Real Estate - 600 Park Avenue South - Park Rapids MN 56470**



website: [www.AffinityRealEstate.com](http://www.AffinityRealEstate.com) | email: [info@affinityrealestate.com](mailto:info@affinityrealestate.com) | office: 218-237-3333 | fax:218-237-3377



**\$319,900**  
 MLS 7077229 Lake Land  
 TBD 242nd Lane  
 Aitkin MN 56431