



MLS 7077283 Residential

**\$539,900**

3,048 sq ft  
4 bedrooms  
3 baths

3616 County 77  
Nisswa MN 56468

Status: Pending

**Description:**

Don't miss this 4-bedroom, 3-bathroom home in Nisswa offering the perfect combination of comfort, space, and functionality. The home features spacious living areas, plenty of natural light, primary suite, attached 2-car garage for everyday convenience, and so much more! A standout feature is the impressive detached 5-car garage, providing endless possibilities for extra vehicles, boats, recreational toys, storage, or workshop space, or even run your own business! Nestled in a peaceful setting with easy access to Gull Lake, many trails, golf and Grandview, and all the amenities the Nisswa area has to offer, this property is ideal as a year-round home or up-north retreat. Don't miss out, Schedule Your Showing Today!

**Additional Details:**


Year Built	1990
Lot Acres	1.25
Lot Dimensions	240x233x310
Garage Stalls	7
School District	181
Taxes	\$7,328
Taxes with Assessments	\$7,328
Tax Year	2025

**Additional Features:**

**Basement:** Block **Fuel:** Propane **Garage:** 7 **Heat:** Forced Air **Sewer:** Tank with Drainage Field **Water:** Drilled **Air Conditioning:** Central Air

**Driving Directions:**

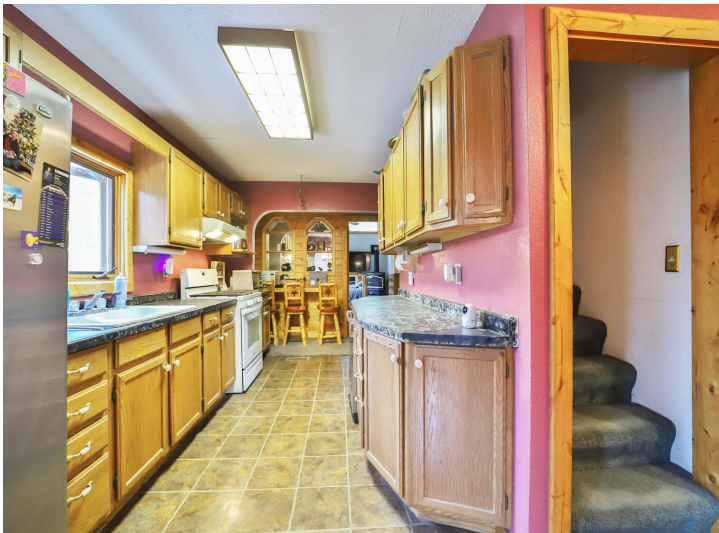
From MN-371 N: at the stoplight, turn left onto Co Rd 77, at the roundabout take the 2nd exit to stay on Co Rd 77, home will be on the right.

 Listed By:  
eXp Realty

Affinity Real Estate Inc. participates in the Regional Multiple Listing Service of Minnesota, Inc Broker Reciprocity (sm) program, allowing us to display other broker's listings on our website. All properties are subject to prior sale, change or withdrawal.

 **Call Affinity Real Estate**  
**218-237-3333**  
**info@affinityrealestate.com**

    
**Affinity Real Estate - 600 Park Avenue South - Park Rapids MN 56470**



website: [www.AffinityRealEstate.com](http://www.AffinityRealEstate.com) | email: [info@affinityrealestate.com](mailto:info@affinityrealestate.com) | office: 218-237-3333 | fax:218-237-3377

**Affinity**  
REAL ESTATE INC

**\$539,900**  
MLS 7077283 Residential  
3616 County 77  
Nisswa MN 56468



website: [www.AffinityRealEstate.com](http://www.AffinityRealEstate.com) | email: [info@affinityrealestate.com](mailto:info@affinityrealestate.com) | office: 218-237-3333 | fax:218-237-3377

**Affinity**  
REAL ESTATE INC

**\$539,900**  
MLS 7077283 Residential  
3616 County 77  
Nisswa MN 56468



website: [www.AffinityRealEstate.com](http://www.AffinityRealEstate.com) | email: [info@affinityrealestate.com](mailto:info@affinityrealestate.com) | office: 218-237-3333 | fax:218-237-3377

**Affinity**  
REAL ESTATE INC

**\$539,900**  
MLS 7077283 Residential  
3616 County 77  
Nisswa MN 56468



website: [www.AffinityRealEstate.com](http://www.AffinityRealEstate.com) | email: [info@affinityrealestate.com](mailto:info@affinityrealestate.com) | office: 218-237-3333 | fax: 218-237-3377

**Affinity**  
REAL ESTATE INC

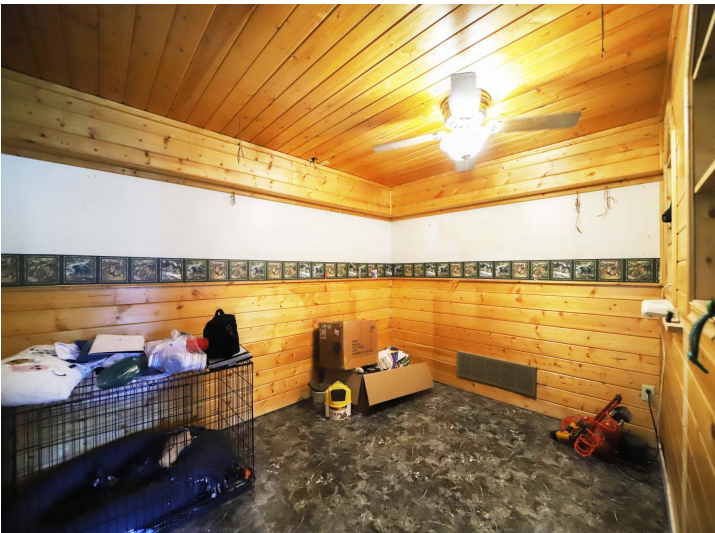
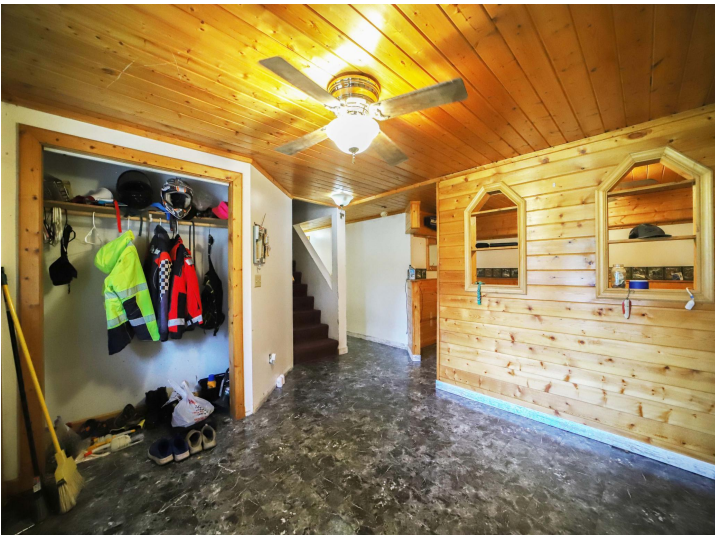
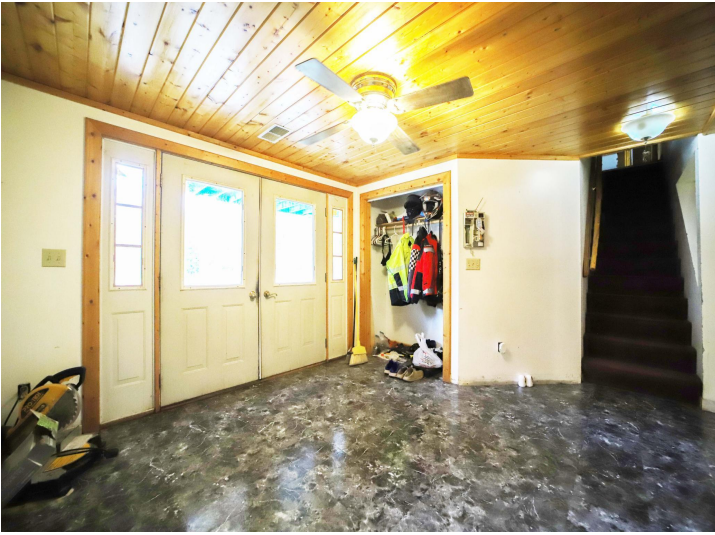
**\$539,900**  
MLS 7077283 Residential  
3616 County 77  
Nisswa MN 56468



website: [www.AffinityRealEstate.com](http://www.AffinityRealEstate.com) | email: [info@affinityrealestate.com](mailto:info@affinityrealestate.com) | office: 218-237-3333 | fax: 218-237-3377

**Affinity**  
REAL ESTATE INC

**\$539,900**  
MLS 7077283 Residential  
3616 County 77  
Nisswa MN 56468



website: [www.AffinityRealEstate.com](http://www.AffinityRealEstate.com) | email: [info@affinityrealestate.com](mailto:info@affinityrealestate.com) | office: 218-237-3333 | fax:218-237-3377

**Affinity**  
REAL ESTATE INC

**\$539,900**  
MLS 7077283 Residential  
3616 County 77  
Nisswa MN 56468



website: [www.AffinityRealEstate.com](http://www.AffinityRealEstate.com) | email: [info@affinityrealestate.com](mailto:info@affinityrealestate.com) | office: 218-237-3333 | fax:218-237-3377



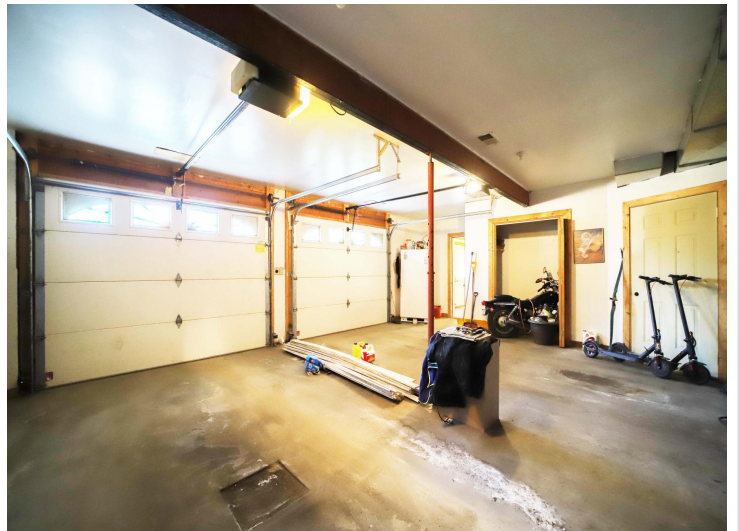
**\$539,900**  
MLS 7077283 Residential  
3616 County 77  
Nisswa MN 56468



website: [www.AffinityRealEstate.com](http://www.AffinityRealEstate.com) | email: [info@affinityrealestate.com](mailto:info@affinityrealestate.com) | office: 218-237-3333 | fax:218-237-3377

**Affinity**  
REAL ESTATE INC

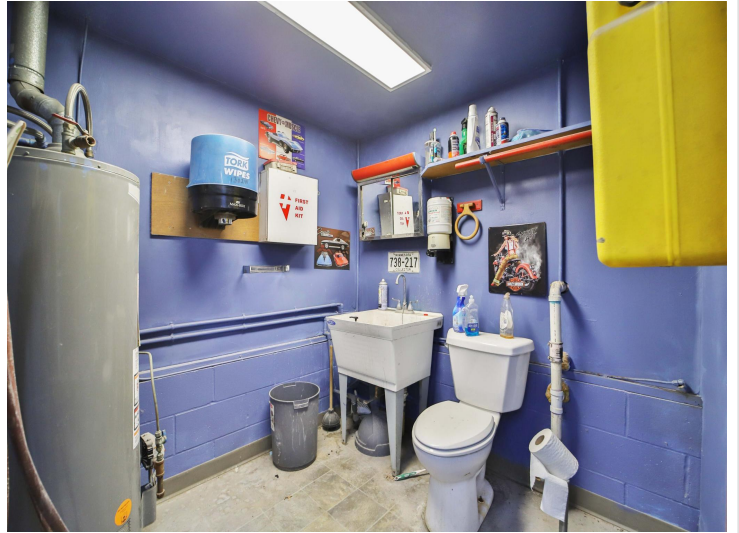
**\$539,900**  
MLS 7077283 Residential  
3616 County 77  
Nisswa MN 56468



website: [www.AffinityRealEstate.com](http://www.AffinityRealEstate.com) | email: [info@affinityrealestate.com](mailto:info@affinityrealestate.com) | office: 218-237-3333 | fax:218-237-3377

**Affinity**  
REAL ESTATE INC

**\$539,900**  
MLS 7077283 Residential  
3616 County 77  
Nisswa MN 56468



website: [www.AffinityRealEstate.com](http://www.AffinityRealEstate.com) | email: [info@affinityrealestate.com](mailto:info@affinityrealestate.com) | office: 218-237-3333 | fax: 218-237-3377

**Affinity**  
REAL ESTATE INC

**\$539,900**  
MLS 7077283 Residential  
3616 County 77  
Nisswa MN 56468



website: [www.AffinityRealEstate.com](http://www.AffinityRealEstate.com) | email: [info@affinityrealestate.com](mailto:info@affinityrealestate.com) | office: 218-237-3333 | fax:218-237-3377

**Affinity**  
REAL ESTATE INC

**\$539,900**  
MLS 7077283 Residential  
3616 County 77  
Nisswa MN 56468



website: [www.AffinityRealEstate.com](http://www.AffinityRealEstate.com) | email: [info@affinityrealestate.com](mailto:info@affinityrealestate.com) | office: 218-237-3333 | fax:218-237-3377



**\$539,900**  
MLS 7077283 Residential  
3616 County 77  
Nisswa MN 56468