



MLS 7077295 Lake Home

\$759,000

1,784 sq ft
3 bedrooms
2 baths

23504 Shore Drive
Emily MN 56447

Waterfront: Mary

Status: Active

Description:

Wake up to lake views on pristine Lake Mary. This 1.5-story retreat on Lake Mary (Emily chain) features 102 feet of hard sand frontage, 34-foot depth, and a lake bottom perfect for swimming and boating. Completely refreshed in 2023 with a new kitchen, four-season porch, updated flooring, and high-end finishes throughout. Inside: tongue-and-groove vaulted ceilings, stone fireplace, loft bedrooms, and picture windows framing the water. Heated in-floor radiant heat. Large detached heated/insulated garage with loft above. Dock and boat lift included. A newly added pond fountain completes this serene setting. Strong short-term rental history — and the sellers may negotiate furnishings. Whether you're chasing your own slice of Minnesota lake life or your next income property, this one checks every box.

Additional Details:

Year Built	2003
Lot Acres	1.23
Lot Dimensions	102x445x146x433
Garage Stalls	4
School District	182
Taxes	\$5,696
Taxes with Assessments	\$5,696
Tax Year	2026

Additional Features:

Basement: None **Fuel:** Electric, Propane **Garage:** 4 **Heat:** Dual Fuel/Off Peak, In-Floor Heating **Sewer:** Private Sewer, Tank with Drainage Field **Water:** Drilled, Private, Well **Air Conditioning:** Ductless Mini-Split

Driving Directions:

From Emily intersection MN-6 & Co Hwy 1 to right on Whitetail Dr, to left on Emily Dr./South Shore Drive to home on left #23504, see sign.



Listed By:
LPT Realty, LLC.

Affinity Real Estate Inc. participates in the Regional Multiple Listing Service of Minnesota, Inc Broker Reciprocity (sm) program, allowing us to display other broker's listings on our website. All properties are subject to prior sale, change or withdrawal.



Call Affinity Real Estate

218-237-3333

info@affinityrealestate.com



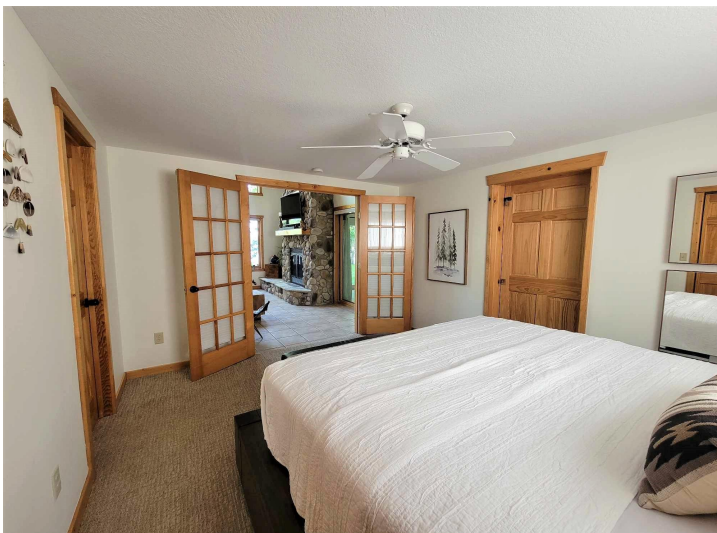
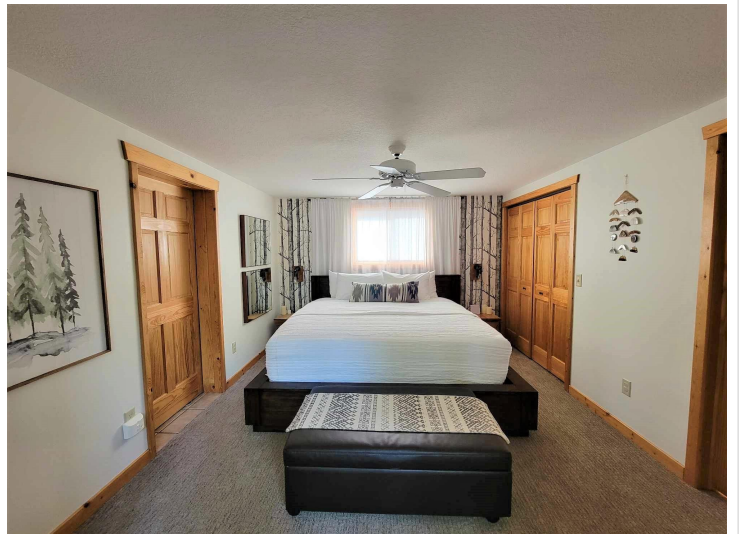
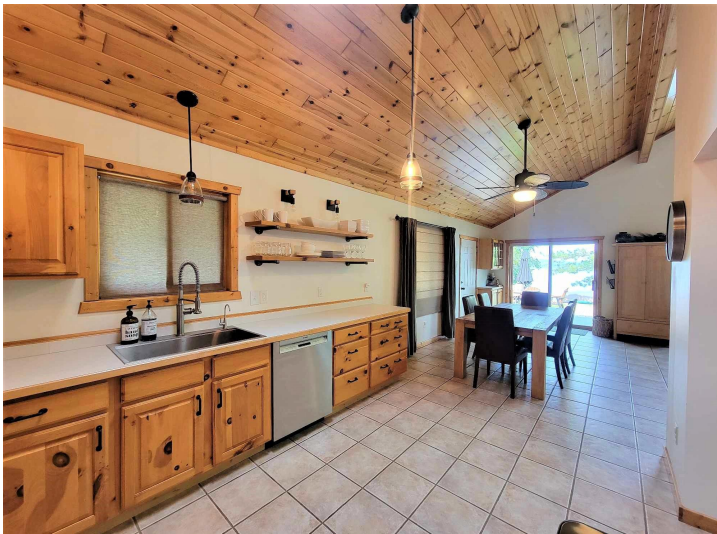
Affinity Real Estate - 600 Park Avenue South - Park Rapids MN 56470



website: www.AffinityRealEstate.com | email: info@affinityrealestate.com | office: 218-237-3333 | fax:218-237-3377



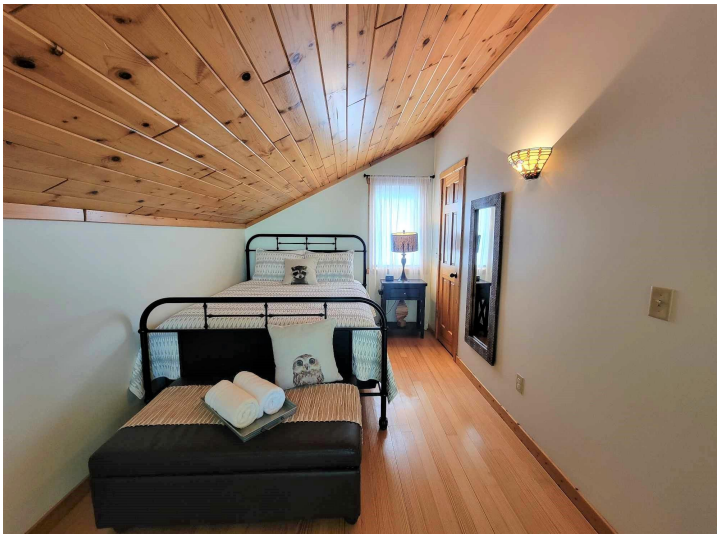
\$759,000
MLS 7077295 Lake Home
23504 Shore Drive
Emily MN 56447



website: www.AffinityRealEstate.com | email: info@affinityrealestate.com | office: 218-237-3333 | fax: 218-237-3377

Affinity
REAL ESTATE INC

\$759,000
MLS 7077295 Lake Home
23504 Shore Drive
Emily MN 56447



website: www.AffinityRealEstate.com | email: info@affinityrealestate.com | office: 218-237-3333 | fax:218-237-3377

Affinity
REAL ESTATE INC

\$759,000
MLS 7077295 Lake Home
23504 Shore Drive
Emily MN 56447



website: www.AffinityRealEstate.com | email: info@affinityrealestate.com | office: 218-237-3333 | fax:218-237-3377



\$759,000
MLS 7077295 Lake Home
23504 Shore Drive
Emily MN 56447