



MLS 7077651 Commercial

\$775,000

1240 Prairie Avenue
Staples MN 56479

Status: Active

Description:

Well maintained commercial building, fully equipped to continue operations of a successful hat manufacturing business with international reach. Perfect opportunity to become a business owner or expand your business enterprise with a turn-key operation.

Additional Details:

Year Built	2008
Lot Acres	1.6
Lot Dimensions	New Split
School District	2170
Taxes	\$6,904
Taxes with Assessments	\$6,904
Tax Year	2026

Additional Features:

Fuel: Natural Gas **Heat:** Forced Air **Sewer:** City Sewer/Connected **Water:** City Water/Connected

Driving Directions:

From Casey's in Staples, North on 8th Street, to Right on Prairie Ave, to property on Left.



Listed By:
Edina Realty, Inc.

Affinity Real Estate Inc. participates in the Regional Multiple Listing Service of Minnesota, Inc Broker Reciprocity (sm) program, allowing us to display other broker's listings on our website. All properties are subject to prior sale, change or withdrawal.



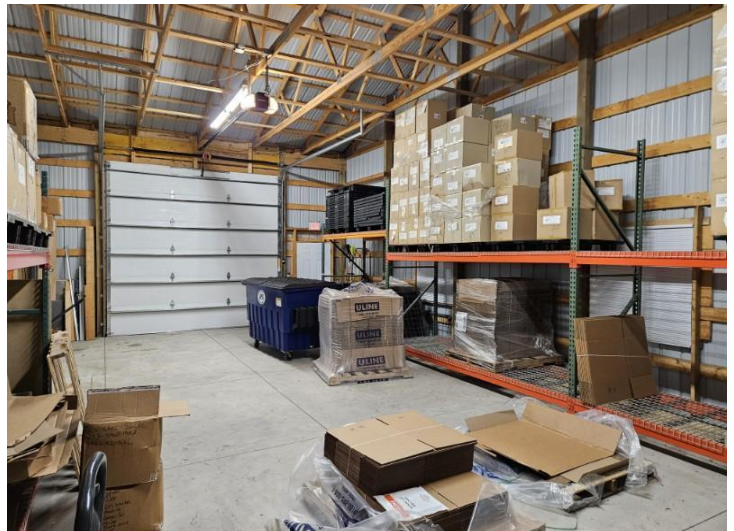
Call Affinity Real Estate

218-237-3333

info@affinityrealestate.com



Affinity Real Estate - 600 Park Avenue South - Park Rapids MN 56470



website: www.AffinityRealEstate.com | email: info@affinityrealestate.com | office: 218-237-3333 | fax:218-237-3377



\$775,000
MLS 7077651 Commercial
1240 Prairie Avenue
Staples MN 56479



website: www.AffinityRealEstate.com | email: info@affinityrealestate.com | office: 218-237-3333 | fax:218-237-3377



\$775,000
MLS 7077651 Commercial
1240 Prairie Avenue
Staples MN 56479