



MLS 7077779 Residential

\$324,900

1,236 sq ft
2 bedrooms
1 baths

2618 Beauty Lake Road
Nisswa MN 56468

Status: Coming Soon

Description:

4.15 Acres located in the heart of the lakes area, the Pillsbury State Forest and on the Gull lake 77 trail! This spacious 2-bedroom home has been completely updated! 36x36 attached garage, Gas fireplace, updated kitchen with SS appliances, granite countertops, new roof and gutters! The large deck overlooks the private yard with mature trees and perennial garden. Looking for a home or guest cottage... property also offers additional space for storage shed or shouse. Fine dining and championship golf at Maddens and Craguns are just down the 77 trail.

Additional Details:

Year Built	1967
Lot Acres	4.15
Lot Dimensions	361x344x497x425
Garage Stalls	2
School District	116
Taxes	\$848
Taxes with Assessments	\$914
Tax Year	2025

Additional Features:

Basement: None **Fuel:** Electric, Natural Gas **Garage:** 2 **Heat:** Baseboard, Ductless Mini-Split, Fireplace(s) **Sewer:** Private Sewer, Tank with Drainage Field **Water:** Private, Well **Air Conditioning:** Ductless Mini-Split

Driving Directions:

2618 Beauty Lake Rd SW



Listed By:
RE/MAX Results - Nisswa

Affinity Real Estate Inc. participates in the Regional Multiple Listing Service of Minnesota, Inc Broker Reciprocity (sm) program, allowing us to display other broker's listings on our website. All properties are subject to prior sale, change or withdrawal.



Call Affinity Real Estate

218-237-3333

info@affinityrealestate.com



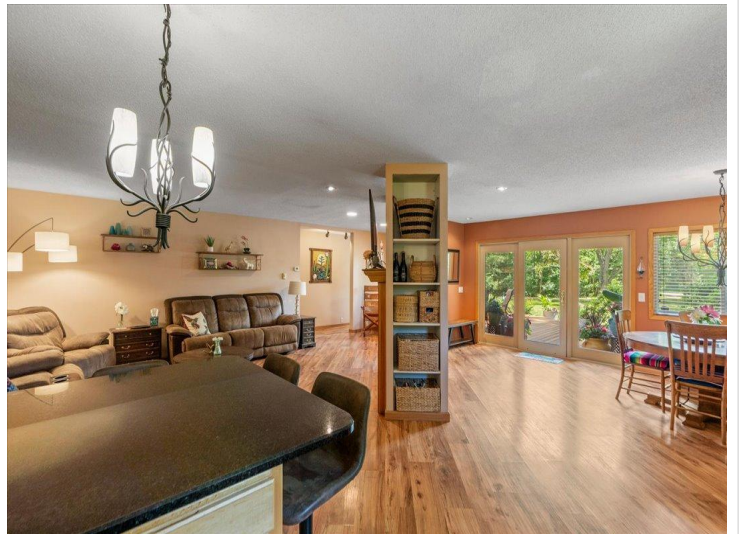
Affinity Real Estate - 600 Park Avenue South - Park Rapids MN 56470



website: www.AffinityRealEstate.com | email: info@affinityrealestate.com | office: 218-237-3333 | fax:218-237-3377

Affinity
REAL ESTATE INC

\$324,900
MLS 7077779 Residential
2618 Beauty Lake Road
Nisswa MN 56468



website: www.AffinityRealEstate.com | email: info@affinityrealestate.com | office: 218-237-3333 | fax: 218-237-3377

Affinity
REAL ESTATE INC

\$324,900
MLS 7077779 Residential
2618 Beauty Lake Road
Nisswa MN 56468



website: www.AffinityRealEstate.com | email: info@affinityrealestate.com | office: 218-237-3333 | fax:218-237-3377

Affinity
REAL ESTATE INC

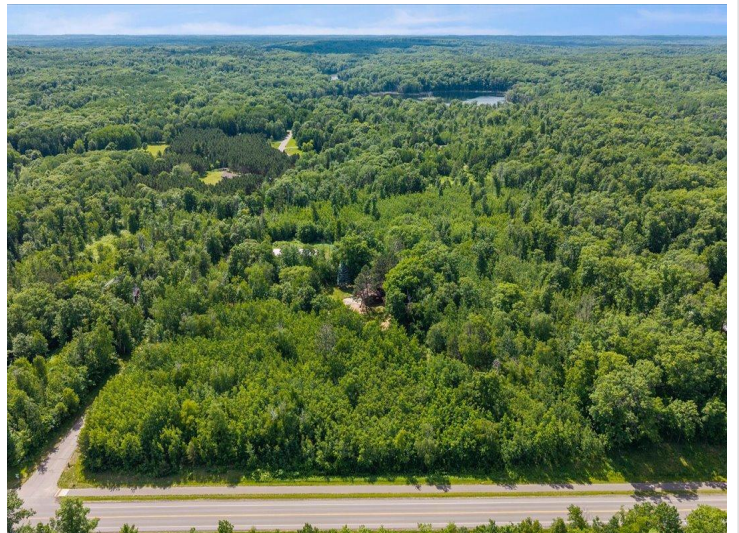
\$324,900
MLS 7077779 Residential
2618 Beauty Lake Road
Nisswa MN 56468



website: www.AffinityRealEstate.com | email: info@affinityrealestate.com | office: 218-237-3333 | fax: 218-237-3377

Affinity
REAL ESTATE INC

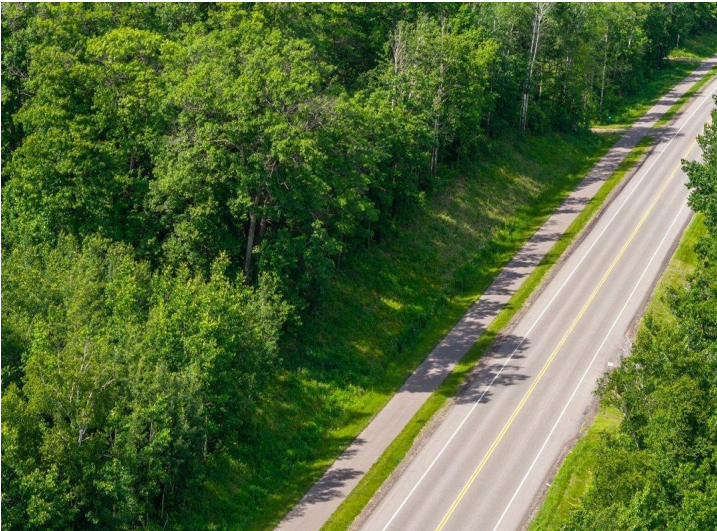
\$324,900
MLS 7077779 Residential
2618 Beauty Lake Road
Nisswa MN 56468



website: www.AffinityRealEstate.com | email: info@affinityrealestate.com | office: 218-237-3333 | fax:218-237-3377



\$324,900
MLS 7077779 Residential
2618 Beauty Lake Road
Nisswa MN 56468



website: www.AffinityRealEstate.com | email: info@affinityrealestate.com | office: 218-237-3333 | fax:218-237-3377



\$324,900
MLS 7077779 Residential
2618 Beauty Lake Road
Nisswa MN 56468