



MLS 7077881 Lake Home

**\$585,000**

2,182 sq ft  
3 bedrooms  
3 baths

4524 Birchmont Drive  
Bemidji MN 56601

Waterfront: Bemidji (main lake)

Status: Coming Soon

**Description:**

Experience the ultimate in lakeside living with this stunning 2-story, 3-bedroom, 3-bathroom town home on beautiful Lake Bemidji. Designed for modern comfort, this property offers the highly sought-after convenience of one-level living alongside breathtaking water views.


Step inside to a bright, open great room featuring a dramatic vaulted, double-height ceiling and a cozy gas-burning fireplace—the perfect centerpiece for crisp Minnesota evenings. The entire home has been freshly painted and features completely updated bathrooms throughout. At the heart of the home is an updated kitchen boasting premium quartz countertops, under cabinet lighting, soft-close cabinetry, and brand-new appliances. Unwind in the spectacular lakeside primary bedroom, complete with a fully updated private ensuite bath and serene wake-up views of the lake. Complete all of this with an attached 2 stall garage and a large lakeside patio for your outdoor entertainment and you just can't ask for much more!

**Association Highlights:**

475' of premium level shoreline access to sandy bottom swimming and an expansive green space. Includes access to two docks, featuring brand-new docks purchased just last year. Bring your own lift. A professional shoreline restoration project was completed in 2022, ensuring eco-friendly stability and beauty and there is a bonus lot ~ an extra lot across the street featuring additional garages, perfect for boat and toy storage, with the exciting potential to build your own garage in the future. Enjoy a turnkey, lock-and-leave lifestyle right on the shores of Lake Bemidji!

**Additional Details:**

Year Built	2001
Lot Acres	0.09
Lot Dimensions	36x110
Garage Stalls	2
School District	31
Taxes	\$7,309
Taxes with Assessments	\$7,500
Tax Year	2026

 Listed By:  
Lake-N-Woods Realty

Fuel: Natural Gas Heat: Forced Air  
Affinity Real Estate Inc. participates in the Regional Multiple Listing Service of Minnesota, Inc Broker Reciprocity (sm) program, allowing us to display other broker's listings on our website. All properties are Headed on Birchmont Dr from I-101 & Bemidji Ave through BSU Or take Bemidji Ave north to Annabelle St NE. Right on Annabelle



**Call Affinity Real Estate**  
**218-237-3333**  
**info@affinityrealestate.com**



campus along the west edge of Lake Bemidji to 4524 on the right. Affinity Real Estate - 600 Park Avenue South - Park Rapids MN 56470 to Birchmont, left onto Birchmont. Follow North to 4524 on the right



website: [www.AffinityRealEstate.com](http://www.AffinityRealEstate.com) | email: [info@affinityrealestate.com](mailto:info@affinityrealestate.com) | office: 218-237-3333 | fax:218-237-3377

**Affinity**  
REAL ESTATE INC

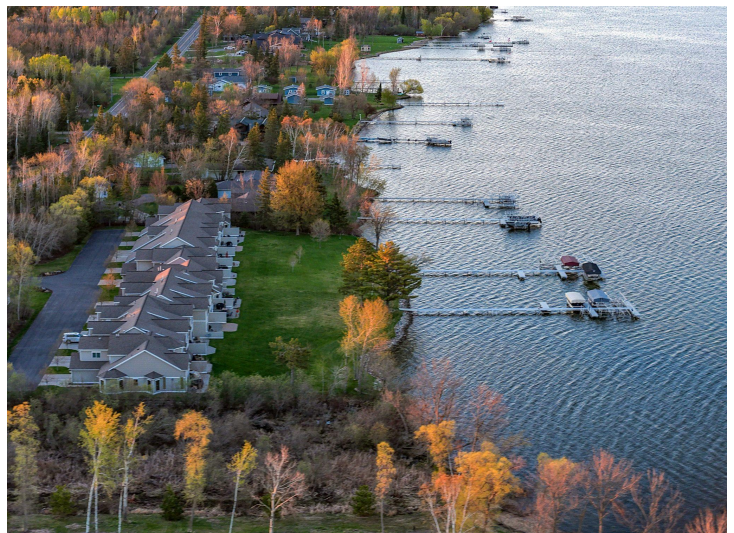
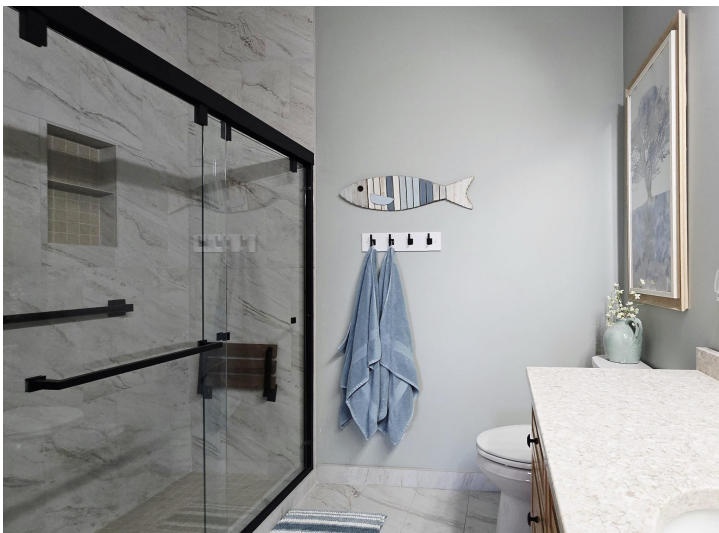
**\$585,000**  
MLS 7077881 Lake Home  
4524 Birchmont Drive  
Bemidji MN 56601



website: [www.AffinityRealEstate.com](http://www.AffinityRealEstate.com) | email: [info@affinityrealestate.com](mailto:info@affinityrealestate.com) | office: 218-237-3333 | fax:218-237-3377



**\$585,000**  
MLS 7077881 Lake Home  
4524 Birchmont Drive  
Bemidji MN 56601



website: [www.AffinityRealEstate.com](http://www.AffinityRealEstate.com) | email: [info@affinityrealestate.com](mailto:info@affinityrealestate.com) | office: 218-237-3333 | fax: 218-237-3377

**Affinity**  
REAL ESTATE INC

**\$585,000**  
MLS 7077881 Lake Home  
4524 Birchmont Drive  
Bemidji MN 56601



website: [www.AffinityRealEstate.com](http://www.AffinityRealEstate.com) | email: [info@affinityrealestate.com](mailto:info@affinityrealestate.com) | office: 218-237-3333 | fax:218-237-3377



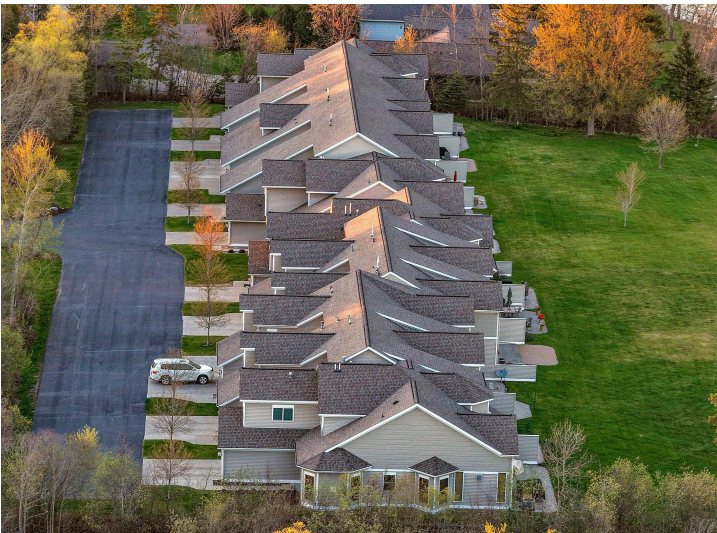
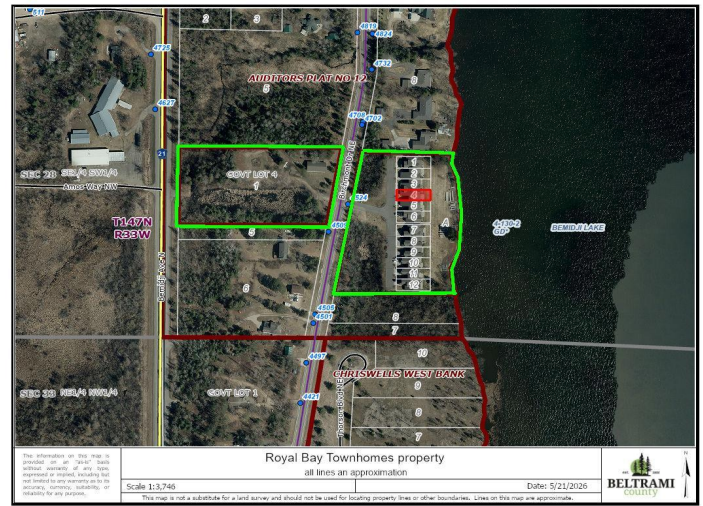
**\$585,000**  
MLS 7077881 Lake Home  
4524 Birchmont Drive  
Bemidji MN 56601



website: [www.AffinityRealEstate.com](http://www.AffinityRealEstate.com) | email: [info@affinityrealestate.com](mailto:info@affinityrealestate.com) | office: 218-237-3333 | fax:218-237-3377



**\$585,000**  
MLS 7077881 Lake Home  
4524 Birchmont Drive  
Bemidji MN 56601



website: [www.AffinityRealEstate.com](http://www.AffinityRealEstate.com) | email: [info@affinityrealestate.com](mailto:info@affinityrealestate.com) | office: 218-237-3333 | fax: 218-237-3377



**\$585,000**  
 MLS 7077881 Lake Home  
 4524 Birchmont Drive  
 Bemidji MN 56601



website: [www.AffinityRealEstate.com](http://www.AffinityRealEstate.com) | email: [info@affinityrealestate.com](mailto:info@affinityrealestate.com) | office: 218-237-3333 | fax:218-237-3377



**\$585,000**  
MLS 7077881 Lake Home  
4524 Birchmont Drive  
Bemidji MN 56601