



MLS 7077980 Residential

**\$209,000**

854 sq ft  
2 bedrooms  
1 baths

526 Superior Avenue  
Crosby MN 56441

Status: Coming Soon

**Description:**

Welcome to 526 Superior Ave — a beautifully maintained home sitting on an impressive four-city-lot corner property in the heart of Crosby. Enjoy the proximity to Serpent Lake and Crosby Memorial Park right out your front door, with the nationally recognized Cuyuna Country State Recreation Area just blocks away, offering world-class mountain biking, hiking, and year-round outdoor adventure.

This home has been well taken care of from top to bottom. The exterior shines with durable Hardie board siding and a brand-new roof, giving you years of worry-free ownership. Inside, the updated kitchen features stainless steel appliances and a functional layout perfect for everyday living and entertaining. Stay comfortable year-round with a new furnace and water heater installed in 2023, two mini-split systems for efficient air conditioning, and a reverse osmosis system ensuring clean, quality drinking water. The expansive corner lot offers rare outdoor space in town — ideal for gardening, recreation, or simply enjoying everything this premier location has to offer. Whether you're an outdoor enthusiast, a nature lover, or simply looking for a home to make your own in a vibrant community, this property checks every box. Don't miss your chance to own a piece of the Cuyuna Lakes lifestyle.

**Additional Details:**

Year Built	1925
Lot Acres	0.287
Lot Dimensions	200x125
Garage Stalls	1
School District	182
Taxes	\$824
Taxes with Assessments	\$824
Tax Year	2025

**Additional Features:**

**Basement:** Block **Fuel:** Natural Gas **Garage:** 1 **Heat:** Forced Air **Sewer:** City Sewer/Connected **Water:** City Water/Connected **Air Conditioning:** Ductless Mini-Split

**Driving Directions:**

From 210/6 intersection in Crosby go South to Left on Superior to Home on the



Listed By:  
Coldwell Banker Crown Realtors

Affinity Real Estate Inc. participates in the Regional Multiple Listing Service of Minnesota, Inc Broker Reciprocity (sm) program, allowing us to display other broker's listings on our website. All properties are subject to prior sale, change or withdrawal.



**Call Affinity Real Estate**

**218-237-3333**

**info@affinityrealestate.com**



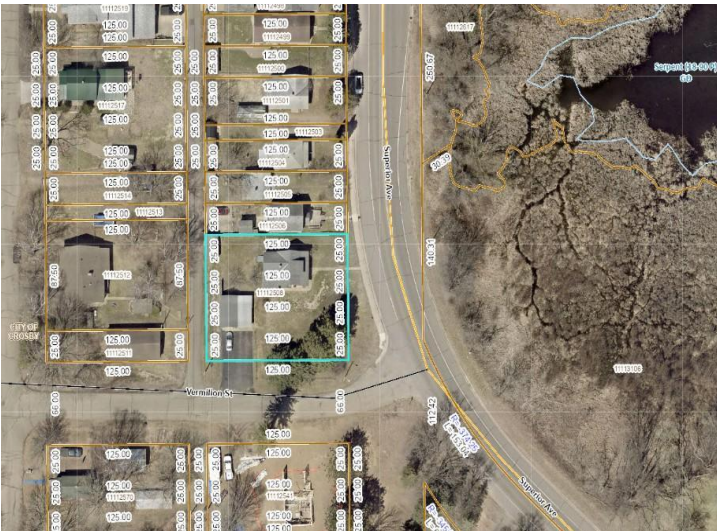
**Affinity Real Estate - 600 Park Avenue South - Park Rapids MN 56470**



website: [www.AffinityRealEstate.com](http://www.AffinityRealEstate.com) | email: [info@affinityrealestate.com](mailto:info@affinityrealestate.com) | office: 218-237-3333 | fax:218-237-3377



**\$209,000**  
MLS 7077980 Residential  
526 Superior Avenue  
Crosby MN 56441



**AREA OVERVIEW**

**OPEN DAILY: 8 AM - 10 PM**  
Mountain bike trail closures will be posted on the CCSA website and at obvious locations in the field.

**Park Facilities and Features:**

- 83 Campsites (seasonal)
- 1 Group camp
- 3 Huts
- 1.4 miles of accessible trail
- 7.5 miles of adaptive biking trails
- Designated trout lakes
- State dining opportunities
- Swimming beaches at Portsmouth Campground and Rally Center
- Mountain bike trails
- Groomed fat tire bike trails in winter
- Cuyuna Lakes State Trail
- 5.5 miles, paved

**ABOUT CUYUNA COUNTRY STATE RECREATION AREA**

Abandoned by mining companies more than 30 years ago, this area now boasts 5,000 acres of regenerated vegetation. The area offers a variety of recreation opportunities including biking (paved and mountain bike trails), snowmobiling, fishing, boating, hiking, wildlife-watching, scuba diving, camping and more.

The 59-mile long mountain bike trail system covers nearly 800 acres. Check out the Yawkey Mine Lake, or for a great view, go west through the Miner's Mountain Rally Center to see the Miner's Mountain Overlook and the Huntington Mine Lake.

When it rains, the single track trails will be immediately closed to all users (foot or bike) until trail conditions dry out or improve. Please contact the park office for up-to-date information or visit the CCSRA website.

In addition to 27 miles of natural shoreline, six mine lakes connect to create 267 acres of continuous water, perfect for exploring by boat or canoe. Anglers can cast a line for trout (with a trout stamp), northern, bass, crappie or sunfish.

Divers will find clear water with sheer walls and flat terraces, characteristic of the mine roads, railroads and other remnants of the mining industry.

**NOTE: Hiking is allowed on the mountain bike trails, unless posted restricted.**

Trails continue into Crow Wing State Forest. For more information, visit: [cuyunastateresort.com/loop](http://cuyunastateresort.com/loop)

**MAHONOMEN UNIT (north) - (9.4 miles)**

**PORTSMOUTH UNIT - (4.8 miles)**

**YAWKEY UNIT - (2 miles)**

**MAHONOMEN UNIT (south) - (17.1 miles)**

**SAGAMORE UNIT - (5.1 miles)**

website: [www.AffinityRealEstate.com](http://www.AffinityRealEstate.com) | email: [info@affinityrealestate.com](mailto:info@affinityrealestate.com) | office: 218-237-3333 | fax: 218-237-3377



**\$209,000**  
MLS 7077980 Residential  
526 Superior Avenue  
Crosby MN 56441