

MLS 7077981 Land

**\$65,000**

5.34 Acres  
Plat Designed

TBD Deacon Drive - Parcel B  
Park Rapids MN 56470

Status: Active

**Description:**

Build the life you've always imagined on 5+ acres in the heart of Minnesota lake country. Nestled near the premier waters of Long Lake, the beloved town of Dorset, and a beautiful golf course, these lots put the best of the Park Rapids area right at your door step. Wake up to wildlife, take a short trip to the lake, and unwind with all the charm of small-town Northwoods living. Your perfect retreat starts here!

**Additional Details:**

Lot Acres	5.34
Lot Dimensions	300x742x308x810
School District	309
Taxes	(unreported)
Taxes with Assessments	(unreported)
Tax Year	2026

**Additional Features:**

**Driving Directions:**

From Park Rapids 34/71 head East on 34 to County 20. Take a right on County 20 for 1.2 miles, to a left on 179th Street for approximately 0.5 mile to property on right at the Coldwell Crown Realtors sign.



Listed By:  
Coldwell Banker Crown Realtors

Affinity Real Estate Inc. participates in the Regional Multiple Listing Service of Minnesota, Inc Broker Reciprocity (sm) program, allowing us to display other broker's listings on our website. All properties are subject to prior sale, change or withdrawal.



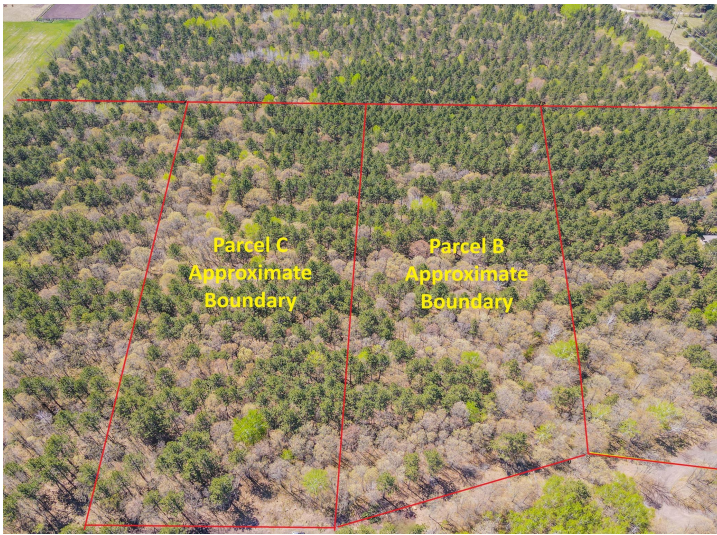
Call Affinity Real Estate

**218-237-3333**

[info@affinityrealestate.com](mailto:info@affinityrealestate.com)



Affinity Real Estate - 600 Park Avenue South - Park Rapids MN 56470



website: [www.AffinityRealEstate.com](http://www.AffinityRealEstate.com) | email: [info@affinityrealestate.com](mailto:info@affinityrealestate.com) | office: 218-237-3333 | fax: 218-237-3377



**\$65,000**  
MLS 7077981 Land  
TBD Deacon Drive - Parcel B  
Park Rapids MN 56470