



MLS 7078113 Residential

\$289,900

3,260 sq ft
6 bedrooms
3 baths

416 Ridge Crest Drive
Pelican Rapids MN 56572

Status: Active

Description:

Great location and beautiful views set the stage for this spacious home situated on the edge of town, offering scenic ponds and rolling hills while still providing all the conveniences of city living. Located in a newer, highly sought-after neighborhood, this expansive property features approximately 3,360 sq. ft. of finished living space with 6 bedrooms and 3 full baths.

Designed with a practical open floor plan, the main level includes a large kitchen with stainless steel appliances, two spacious living areas, a gorgeous primary suite, two additional bedrooms, an additional full bath, and convenient main-floor laundry.

The fully finished basement offers outstanding flexibility with a full kitchen and dining area, family room, 3 bedrooms, full bath, and utility room — ideal for multi-generational living, guest space, entertaining, or other possibilities.

Additional highlights include a radon mitigation system, water softener, outdoor fire pit area, garden area, a small side lot for that motor home or boat parking, and plenty of room both inside and out to enjoy comfortable living and entertaining year-round.

Additional Details:

Year Built	2004
Lot Acres	0.402
Lot Dimensions	120x146
Garage Stalls	2
School District	548
Taxes	\$2,600
Taxes with Assessments	\$4,083
Tax Year	2025

Additional Features:

Basement: Block, Finished, Full **Fuel:** Natural Gas **Garage:** 2 **Heat:** Forced Air **Sewer:** City Sewer/Connected **Water:** City Water/Connected **Air**

Call Affinity Real Estate
Listed By:
RE/MAX Legacy Realty



Call Affinity Real Estate
218-237-3333
info@affinityrealestate.com

Office: 600 Park Avenue South, Pelican Rapids, MN 56572
Service of Minnesota, Inc Broker Reciprocity (sm) program, allowing us to display other broker's listings on our website. All properties are subject to prior sale, change or withdrawal.



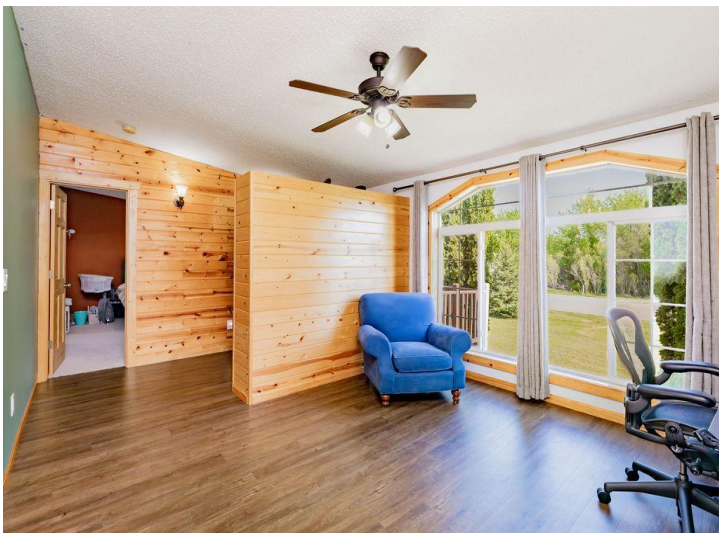
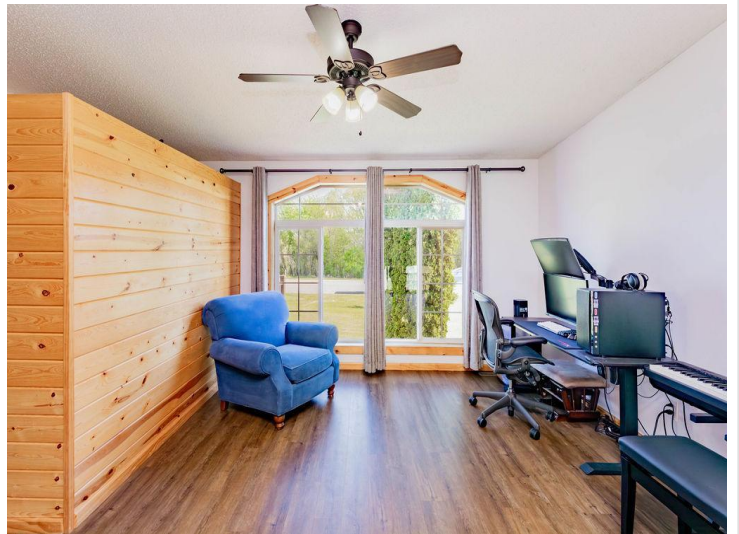
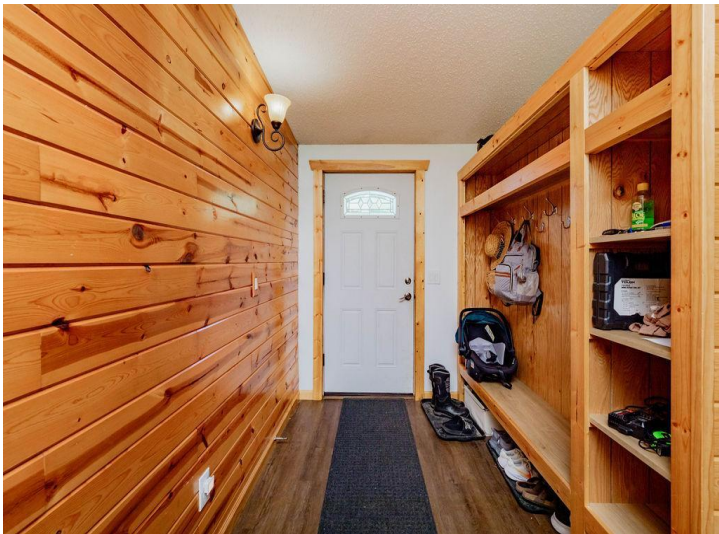
Affinity Real Estate - 600 Park Avenue South - Park Rapids MN 56470



website: www.AffinityRealEstate.com | email: info@affinityrealestate.com | office: 218-237-3333 | fax:218-237-3377



\$289,900
MLS 7078113 Residential
416 Ridge Crest Drive
Pelican Rapids MN 56572



website: www.AffinityRealEstate.com | email: info@affinityrealestate.com | office: 218-237-3333 | fax:218-237-3377

Affinity
REAL ESTATE INC

\$289,900
MLS 7078113 Residential
416 Ridge Crest Drive
Pelican Rapids MN 56572



website: www.AffinityRealEstate.com | email: info@affinityrealestate.com | office: 218-237-3333 | fax:218-237-3377

Affinity
REAL ESTATE INC

\$289,900
MLS 7078113 Residential
416 Ridge Crest Drive
Pelican Rapids MN 56572



website: www.AffinityRealEstate.com | email: info@affinityrealestate.com | office: 218-237-3333 | fax:218-237-3377

Affinity
REAL ESTATE INC

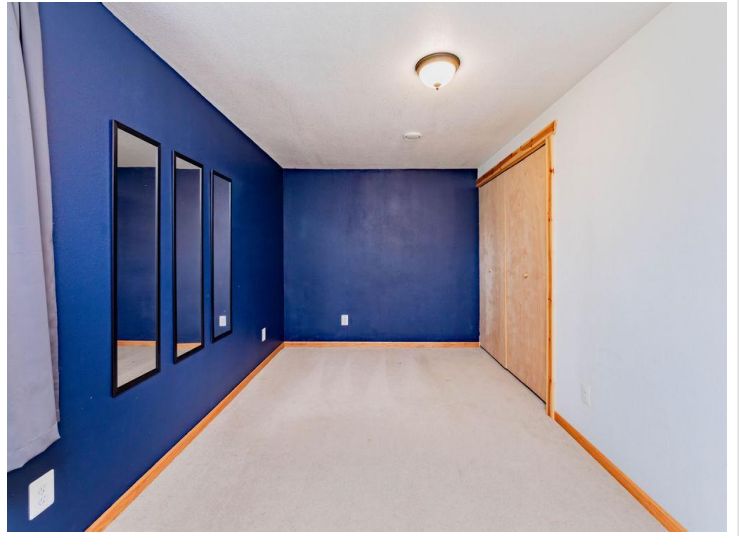
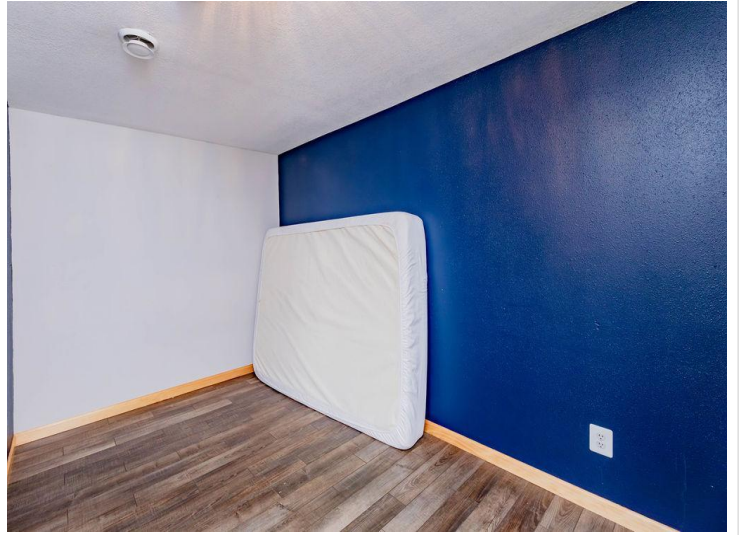
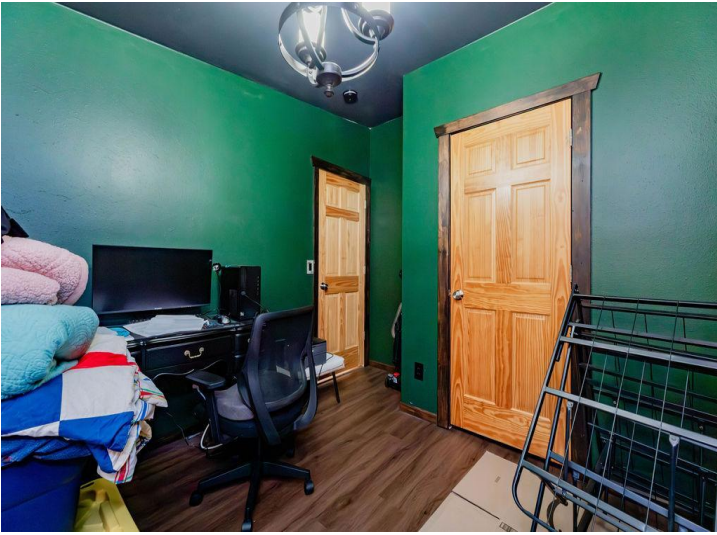
\$289,900
MLS 7078113 Residential
416 Ridge Crest Drive
Pelican Rapids MN 56572



website: www.AffinityRealEstate.com | email: info@affinityrealestate.com | office: 218-237-3333 | fax:218-237-3377



\$289,900
MLS 7078113 Residential
416 Ridge Crest Drive
Pelican Rapids MN 56572



website: www.AffinityRealEstate.com | email: info@affinityrealestate.com | office: 218-237-3333 | fax:218-237-3377



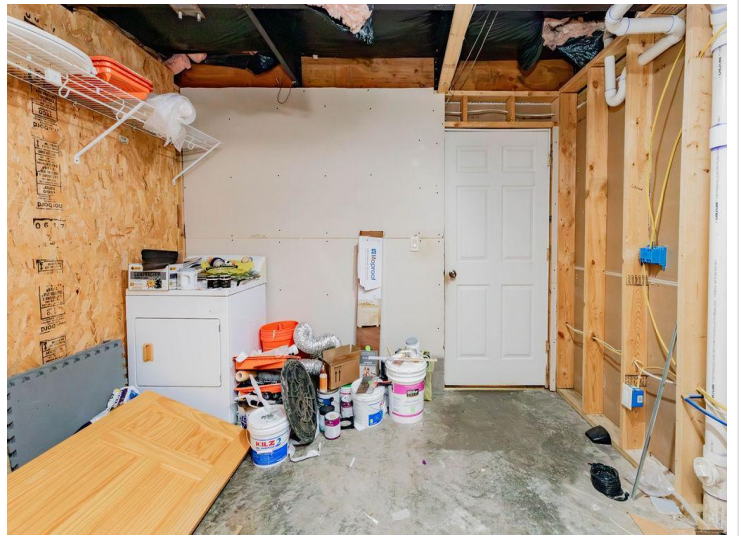
\$289,900
MLS 7078113 Residential
416 Ridge Crest Drive
Pelican Rapids MN 56572



website: www.AffinityRealEstate.com | email: info@affinityrealestate.com | office: 218-237-3333 | fax:218-237-3377



\$289,900
MLS 7078113 Residential
416 Ridge Crest Drive
Pelican Rapids MN 56572



website: www.AffinityRealEstate.com | email: info@affinityrealestate.com | office: 218-237-3333 | fax:218-237-3377

Affinity
REAL ESTATE INC

\$289,900
MLS 7078113 Residential
416 Ridge Crest Drive
Pelican Rapids MN 56572