



MLS 7078526 Residential

**\$77,500**

872 sq ft  
2 bedrooms  
1 baths

410 Washington Avenue  
Fertile MN 56540

Status: Active

**Description:**

This underappreciated corner lot home would make a great home with alittle finishing work. Built in the 50's this home has plenty of charm and appeal. The garage was built in 2004 - Lot of life left in this home so call today for showing.

**Additional Details:**

Year Built	1952
Lot Acres	0.161
Lot Dimensions	48 x 141 approx
Garage Stalls	2
School District	599
Taxes	\$961
Taxes with Assessments	\$1,296
Tax Year	2026

**Additional Features:**

**Basement:** Block **Fuel:** Electric **Garage:** 2 **Heat:** Baseboard **Sewer:** City Sewer/Connected **Water:** City Water/Connected **Air Conditioning:** None

**Driving Directions:**

Turn on Washington Ave NE



Listed By:  
Hometown Realty

Affinity Real Estate Inc. participates in the Regional Multiple Listing Service of Minnesota, Inc Broker Reciprocity (sm) program, allowing us to display other broker's listings on our website. All properties are subject to prior sale, change or withdrawal.



Call Affinity Real Estate

**218-237-3333**

[info@affinityrealestate.com](mailto:info@affinityrealestate.com)



Affinity Real Estate - 600 Park Avenue South - Park Rapids MN 56470



website: [www.AffinityRealEstate.com](http://www.AffinityRealEstate.com) | email: [info@affinityrealestate.com](mailto:info@affinityrealestate.com) | office: 218-237-3333 | fax:218-237-3377

**Affinity**  
REAL ESTATE INC

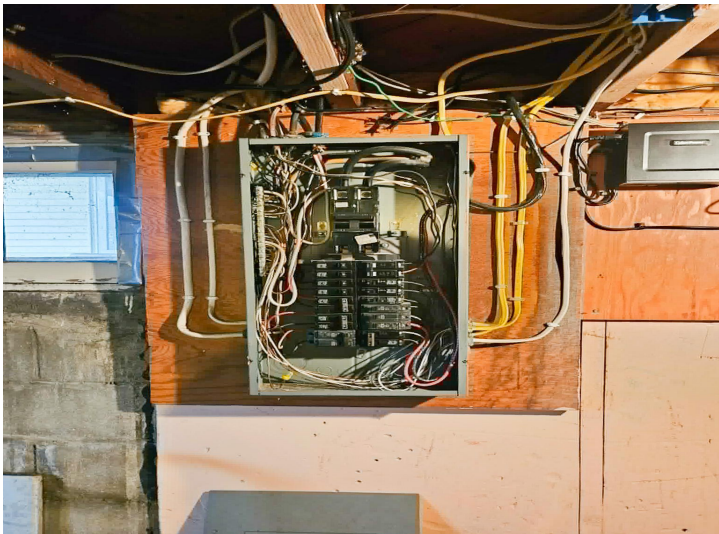
**\$77,500**  
MLS 7078526 Residential  
410 Washington Avenue  
Fertile MN 56540



website: [www.AffinityRealEstate.com](http://www.AffinityRealEstate.com) | email: [info@affinityrealestate.com](mailto:info@affinityrealestate.com) | office: 218-237-3333 | fax:218-237-3377

**Affinity**  
REAL ESTATE INC

**\$77,500**  
MLS 7078526 Residential  
410 Washington Avenue  
Fertile MN 56540



website: [www.AffinityRealEstate.com](http://www.AffinityRealEstate.com) | email: [info@affinityrealestate.com](mailto:info@affinityrealestate.com) | office: 218-237-3333 | fax:218-237-3377



**\$77,500**  
MLS 7078526 Residential  
410 Washington Avenue  
Fertile MN 56540