



MLS 7078579 Lake Home

\$500,000

1,395 sq ft
3 bedrooms
2 baths

35470 Moccasin Lane
Cushing MN 56443

Waterfront: Big

Status: Active

Description:

Set at the end of a quiet dead end road, this year-round lake cabin on Big Lake near Cushing offers the perfect weekend getaway feel with 275' of shoreline and plenty of room to enjoy the lake. The gradual lot leads down to a sandy beach and excellent swimming area, making the shoreline one of the highlights of the property. Big Lake is known for great recreation and strong bass fishing. The 2 bedroom, 2 bath cabin features updated flooring, lots of windows with great lake views, knotty pine finishes, easy-care tile floors, and a wraparound deck with additional lakeside patio space. The newer dome structure creates a unique 3rd sleeping space with incredible lake views and includes both heat and A/C for year-round use. Two docks, two sheds, and the waterslide are included. Whether you're looking for a year-round cabin, weekend getaway, or rental property, this one is ready to enjoy.

Additional Details:

Year Built	2011
Lot Acres	0.82
Lot Dimensions	66x346x275x193
School District	787
Taxes	\$4,466
Taxes with Assessments	\$4,524
Tax Year	2026

Additional Features:

Fuel: Electric **Heat:** Ductless Mini-Split

Driving Directions:

From Hwy 10, turn West onto 260th St and go 5.5 miles, then turn right onto Meadow Lark Dr and continue to Moccasin Trail. Drive 0.9 miles, then turn left onto Moccasin Lane. Property will be at the end of the road when you come to the gate.



Listed By:
Keller Williams Realty Professionals

Affinity Real Estate Inc. participates in the Regional Multiple Listing Service of Minnesota, Inc Broker Reciprocity (sm) program, allowing us to display other broker's listings on our website. All properties are subject to prior sale, change or withdrawal.



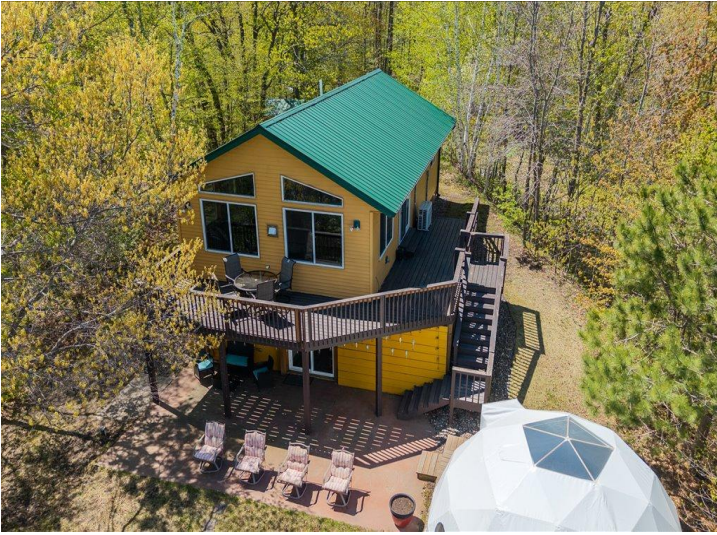
Call Affinity Real Estate

218-237-3333

info@affinityrealestate.com



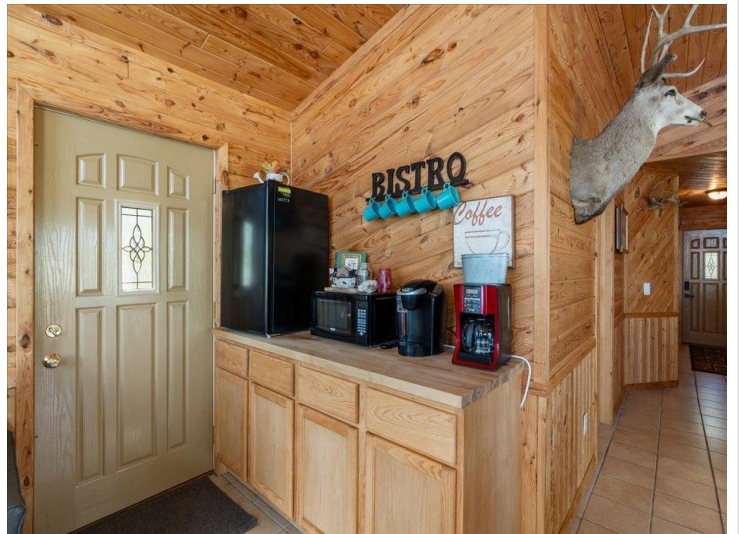
Affinity Real Estate - 600 Park Avenue South - Park Rapids MN 56470



website: www.AffinityRealEstate.com | email: info@affinityrealestate.com | office: 218-237-3333 | fax:218-237-3377



\$500,000
MLS 7078579 Lake Home
35470 Moccasin Lane
Cushing MN 56443



website: www.AffinityRealEstate.com | email: info@affinityrealestate.com | office: 218-237-3333 | fax: 218-237-3377

Affinity
REAL ESTATE INC

\$500,000
MLS 7078579 Lake Home
35470 Moccasin Lane
Cushing MN 56443



website: www.AffinityRealEstate.com | email: info@affinityrealestate.com | office: 218-237-3333 | fax: 218-237-3377

Affinity
REAL ESTATE INC

\$500,000
MLS 7078579 Lake Home
35470 Moccasin Lane
Cushing MN 56443



website: www.AffinityRealEstate.com | email: info@affinityrealestate.com | office: 218-237-3333 | fax:218-237-3377



\$500,000
MLS 7078579 Lake Home
35470 Moccasin Lane
Cushing MN 56443



website: www.AffinityRealEstate.com | email: info@affinityrealestate.com | office: 218-237-3333 | fax:218-237-3377



\$500,000
MLS 7078579 Lake Home
35470 Moccasin Lane
Cushing MN 56443



website: www.AffinityRealEstate.com | email: info@affinityrealestate.com | office: 218-237-3333 | fax:218-237-3377

Affinity
REAL ESTATE INC

\$500,000
MLS 7078579 Lake Home
35470 Moccasin Lane
Cushing MN 56443



website: www.AffinityRealEstate.com | email: info@affinityrealestate.com | office: 218-237-3333 | fax:218-237-3377

Affinity
REAL ESTATE INC

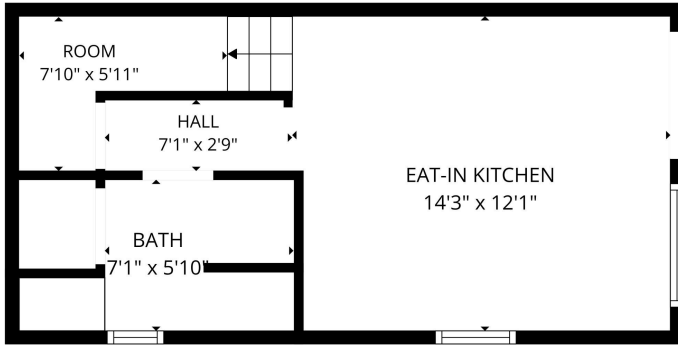
\$500,000
MLS 7078579 Lake Home
35470 Moccasin Lane
Cushing MN 56443



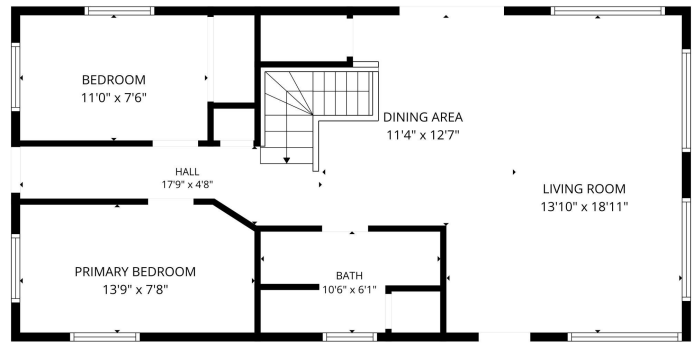
website: www.AffinityRealEstate.com | email: info@affinityrealestate.com | office: 218-237-3333 | fax:218-237-3377



\$500,000
MLS 7078579 Lake Home
35470 Moccasin Lane
Cushing MN 56443



FLOOR PLAN CREATED BY CUBICASA APP. MEASUREMENTS DEEMED HIGHLY RELIABLE BUT NOT GUARANTEED.



FLOOR PLAN CREATED BY CUBICASA APP. MEASUREMENTS DEEMED HIGHLY RELIABLE BUT NOT GUARANTEED.

website: www.AffinityRealEstate.com | email: info@affinityrealestate.com | office: 218-237-3333 | fax: 218-237-3377



\$500,000
 MLS 7078579 Lake Home
 35470 Moccasin Lane
 Cushing MN 56443