



MLS 7078653 Residential

\$349,900

2,368 sq ft
4 bedrooms
3 baths

125 Ash Avenue
Miltona MN 56354

Status: Coming Soon

Description:

Spacious and updated 4-bedroom home with a bonus non-conforming bedroom and 3 bathrooms in quiet Miltona, just 10 miles north of Alexandria. Features include a private primary suite, newer roof, siding, windows, irrigation, tankless water heater, appliances, flooring, and countertops. Enjoy a private backyard and the convenience of being just down the road from the highly regarded Miltona Science Magnet Elementary School.

Additional Details:

Year Built	2001
Lot Acres	0.53
Lot Dimensions	110x207x110x214
Garage Stalls	2
School District	206
Taxes	\$3,326
Taxes with Assessments	\$3,326
Tax Year	2026

Additional Features:

Basement: Block, Drain Tiled, Egress Window(s), Finished, Full, Sump Pump **Fuel:** Natural Gas **Garage:** 2 **Heat:** Forced Air **Sewer:** City Sewer/Connected **Water:** Well **Air Conditioning:** Central Air

Driving Directions:

Take highway 29 North to Miltona, take a right onto CR-14, left onto CR-64, then turn right onto Ash St. Home is located on the left.



Listed By:
Kvale Real Estate

Affinity Real Estate Inc. participates in the Regional Multiple Listing Service of Minnesota, Inc Broker Reciprocity (sm) program, allowing us to display other broker's listings on our website. All properties are subject to prior sale, change or withdrawal.



Call Affinity Real Estate

218-237-3333

info@affinityrealestate.com



Affinity Real Estate - 600 Park Avenue South - Park Rapids MN 56470



website: www.AffinityRealEstate.com | email: info@affinityrealestate.com | office: 218-237-3333 | fax:218-237-3377

Affinity
REAL ESTATE INC

\$349,900
MLS 7078653 Residential
125 Ash Avenue
Miltona MN 56354



website: www.AffinityRealEstate.com | email: info@affinityrealestate.com | office: 218-237-3333 | fax:218-237-3377



\$349,900
MLS 7078653 Residential
125 Ash Avenue
Miltona MN 56354



website: www.AffinityRealEstate.com | email: info@affinityrealestate.com | office: 218-237-3333 | fax:218-237-3377

Affinity
REAL ESTATE INC

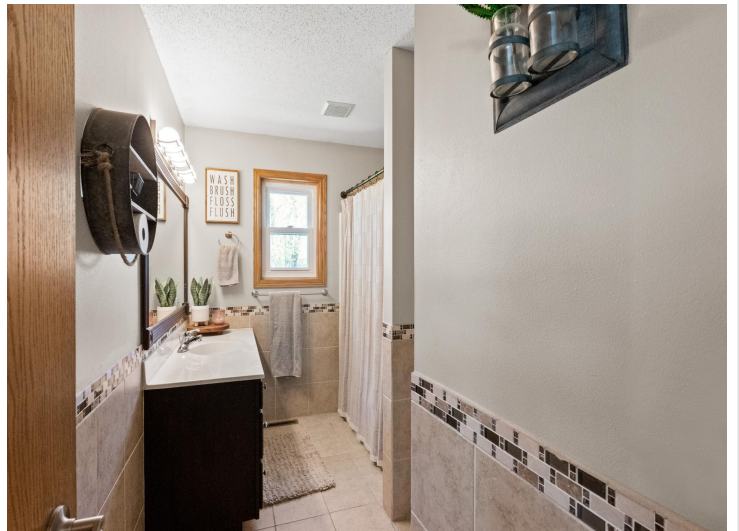
\$349,900
MLS 7078653 Residential
125 Ash Avenue
Miltona MN 56354



website: www.AffinityRealEstate.com | email: info@affinityrealestate.com | office: 218-237-3333 | fax:218-237-3377

Affinity
REAL ESTATE INC

\$349,900
MLS 7078653 Residential
125 Ash Avenue
Miltona MN 56354



website: www.AffinityRealEstate.com | email: info@affinityrealestate.com | office: 218-237-3333 | fax:218-237-3377



\$349,900
MLS 7078653 Residential
125 Ash Avenue
Miltona MN 56354



website: www.AffinityRealEstate.com | email: info@affinityrealestate.com | office: 218-237-3333 | fax: 218-237-3377

Affinity
REAL ESTATE INC

\$349,900
MLS 7078653 Residential
125 Ash Avenue
Miltona MN 56354



website: www.AffinityRealEstate.com | email: info@affinityrealestate.com | office: 218-237-3333 | fax:218-237-3377

Affinity
REAL ESTATE INC

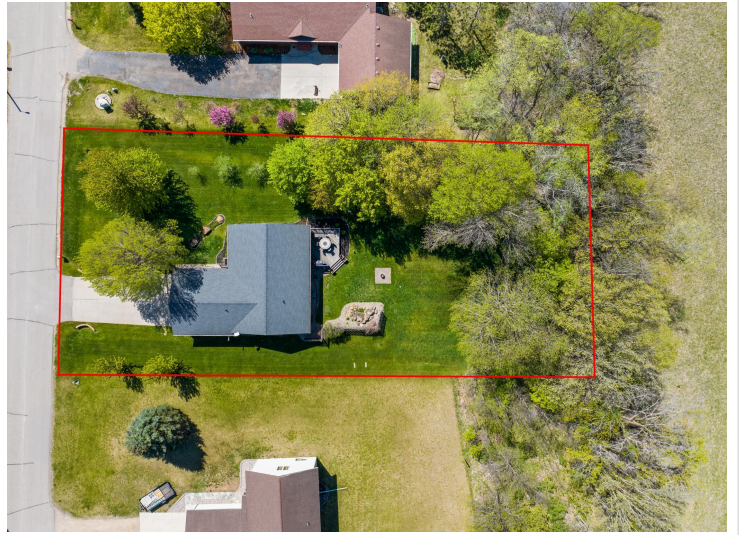
\$349,900
MLS 7078653 Residential
125 Ash Avenue
Miltona MN 56354



website: www.AffinityRealEstate.com | email: info@affinityrealestate.com | office: 218-237-3333 | fax:218-237-3377

Affinity
REAL ESTATE INC

\$349,900
MLS 7078653 Residential
125 Ash Avenue
Miltona MN 56354



website: www.AffinityRealEstate.com | email: info@affinityrealestate.com | office: 218-237-3333 | fax:218-237-3377



\$349,900
MLS 7078653 Residential
125 Ash Avenue
Miltona MN 56354