



MLS 7079075 Residential

\$425,000

1,472 sq ft
2 bedrooms
2 baths

26296 County Highway 20
Detroit Lakes MN 56501

Status: Active

Description:

Escape to the country for patio home living without sacrificing convenience! Nestled on nearly 6 scenic acres near Pelican Lake, this well-maintained property offers peaceful rural living with beautiful countryside wooded and pond views while remaining close to all the area action and recreation.

Built in 2021, the home features 2 bedrooms, 2 bathrooms, and an inviting layout designed for comfort year-round with in-floor heat throughout both the home and the 36X34 attached heated garage. Both bedrooms boast spacious walk-in closets for ample storage, while an abundance of additional storage throughout makes everyday living easy and functional.

Outside, you'll find the ideal setup for hobbies, toys, or workspace needs with a 24X32 detached shop with tall sidewalls in addition to the oversized attached garage. For those who love outdoor adventures, the property includes a convenient sewer/water/electricity hookup ready for your (or a guests) camper or RV. Whether you're looking for a full-time residence or a weekend retreat near the lakes area, this property delivers privacy, space, and versatility in a highly desirable location.

Enjoy quiet country living, wide-open skies from the covered patio, and room to spread out — all just minutes from lakes, recreation, dining, and entertainment.

Additional Details:

Year Built	2021
Lot Acres	5.82
Lot Dimensions	Irregular
Garage Stalls	2
School District	548
Taxes	\$2,007
Taxes with Assessments	\$2,092
Tax Year	2026

Listed By: Horizon Real Estate Group

Garage: 2 **Heat:** Forced Air **Sewer:** Sewer **Water:** Well **Air Conditioning:** Central Air

Affinity Real Estate Inc. participates in the Regional Multiple Listing Service of Minnesota, Inc Broker Reciprocity (sm) program, allowing us to display other broker's listings on our website. All properties are subject to prior sale, change or withdrawal.



Call Affinity Real Estate

218-237-3833

info@affinityrealestate.com



Affinity Real Estate - 600 Park Avenue South - Park Rapids MN 56470



website: www.AffinityRealEstate.com | email: info@affinityrealestate.com | office: 218-237-3333 | fax:218-237-3377

Affinity
REAL ESTATE INC

\$425,000
MLS 7079075 Residential
26296 County Highway 20
Detroit Lakes MN 56501



website: www.AffinityRealEstate.com | email: info@affinityrealestate.com | office: 218-237-3333 | fax:218-237-3377



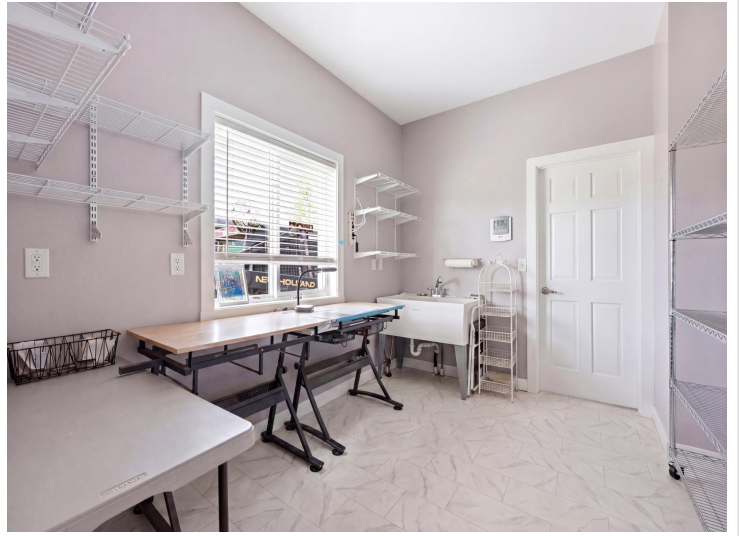
\$425,000
MLS 7079075 Residential
26296 County Highway 20
Detroit Lakes MN 56501



website: www.AffinityRealEstate.com | email: info@affinityrealestate.com | office: 218-237-3333 | fax: 218-237-3377

Affinity
REAL ESTATE INC

\$425,000
MLS 7079075 Residential
26296 County Highway 20
Detroit Lakes MN 56501



website: www.AffinityRealEstate.com | email: info@affinityrealestate.com | office: 218-237-3333 | fax:218-237-3377



\$425,000
MLS 7079075 Residential
26296 County Highway 20
Detroit Lakes MN 56501



website: www.AffinityRealEstate.com | email: info@affinityrealestate.com | office: 218-237-3333 | fax:218-237-3377



\$425,000
MLS 7079075 Residential
26296 County Highway 20
Detroit Lakes MN 56501



website: www.AffinityRealEstate.com | email: info@affinityrealestate.com | office: 218-237-3333 | fax:218-237-3377

Affinity
REAL ESTATE INC

\$425,000
MLS 7079075 Residential
26296 County Highway 20
Detroit Lakes MN 56501



website: www.AffinityRealEstate.com | email: info@affinityrealestate.com | office: 218-237-3333 | fax:218-237-3377



\$425,000
MLS 7079075 Residential
26296 County Highway 20
Detroit Lakes MN 56501



website: www.AffinityRealEstate.com | email: info@affinityrealestate.com | office: 218-237-3333 | fax:218-237-3377



\$425,000
MLS 7079075 Residential
26296 County Highway 20
Detroit Lakes MN 56501