



MLS 7079093 Lake Home

**\$119,900**

432 sq ft  
1 bedrooms  
1 baths

20174 Rudbeck Road  
Brainerd MN 56401

Waterfront: North Long

Status: Active

**Description:**

Located on the north side of the 371 Bay of North Long Lake, this well-maintained seasonal property offers an easy way to enjoy lake life in the Brainerd Lakes Area. Just 12 minutes north of Baxter and 10 minutes south of Nisswa, the location provides convenient access to dining, shopping, golf, trails, and year-round area recreation.

The 2014 park model has had one owner and has been carefully maintained. It comfortably sleeps four with a queen bed and pull-out couch, and some furnishings are included for a simple transition into ownership. Interior features include a full bathroom, central air and heat, and a gas range. Outside, the 24x8 composite front deck provides a comfortable space to relax, grill, and gather, while the 6x8 storage shed adds room for lake gear and seasonal items.

The association offers shared access to North Long Lake with a beach, dock, common grounds, clubhouse with rec/game room, bathrooms, showers, and fish-cleaning area. Annual dues of \$1,200 include dock and lift in/out, shared well and septic, trash, Wi-Fi, lawn care, and maintenance of common amenities.

A practical, low-maintenance option for enjoying one of the area's premier lakes without the work of traditional cabin ownership.

**Additional Details:**

Year Built	2014
Lot Acres	0.04
Lot Dimensions	24 x 52 x 31 x 52
School District	181
Taxes	\$500
Taxes with Assessments	\$500
Tax Year	2025

**Additional Features:**

**Basement:** None **Fuel:** Propane **Heat:** Forced Air, Fireplace(s) **Sewer:** Shared Septic, Tank with Drainage Field **Water:** Shared System, Well **Air Conditioning:** Central Air

**Driving Directions:**

FROM BRAINERD, NORTH ON 371 TO OJIBWA ROAD, GO EAST 1/4 MILE TO RUDBECK ROAD, SOUTH INTO ASSOCIATION, TAKE LEFT TO UNIT #16



Listed By:  
Pemberton RE

Affinity Real Estate Inc. participates in the Regional Multiple Listing Service of Minnesota, Inc Broker Reciprocity (sm) program, allowing us to display other broker's listings on our website. All properties are subject to prior sale, change or withdrawal.



**Call Affinity Real Estate**

**218-237-3333**

**info@affinityrealestate.com**



**Affinity Real Estate - 600 Park Avenue South - Park Rapids MN 56470**



website: [www.AffinityRealEstate.com](http://www.AffinityRealEstate.com) | email: [info@affinityrealestate.com](mailto:info@affinityrealestate.com) | office: 218-237-3333 | fax: 218-237-3377



**\$119,900**  
MLS 7079093 Lake Home  
20174 Rudbeck Road  
Brainerd MN 56401



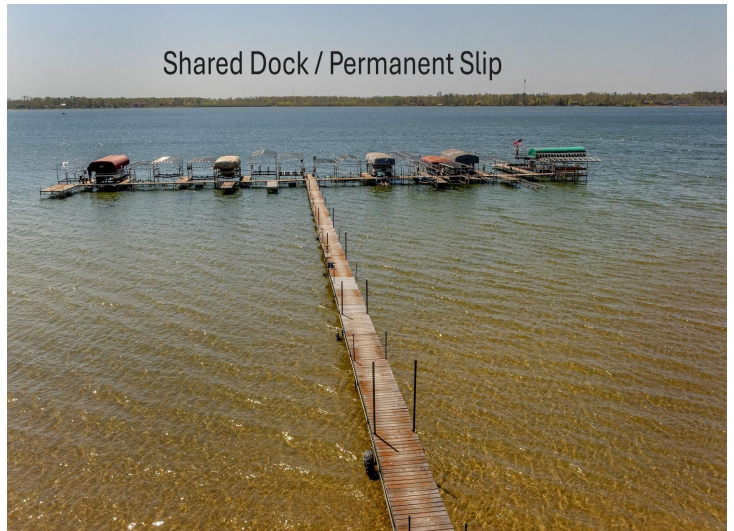
website: [www.AffinityRealEstate.com](http://www.AffinityRealEstate.com) | email: [info@affinityrealestate.com](mailto:info@affinityrealestate.com) | office: 218-237-3333 | fax: 218-237-3377

**Affinity**  
REAL ESTATE INC

**\$119,900**  
MLS 7079093 Lake Home  
20174 Rudbeck Road  
Brainerd MN 56401



6,190 Lake Acres  
13 Feet of Clarity  
97 Feet Deep



Shared Dock / Permanent Slip

website: [www.AffinityRealEstate.com](http://www.AffinityRealEstate.com) | email: [info@affinityrealestate.com](mailto:info@affinityrealestate.com) | office: 218-237-3333 | fax: 218-237-3377



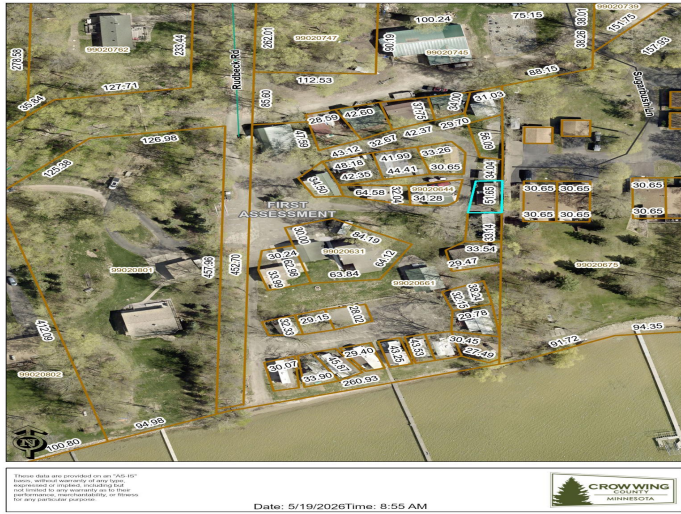
**\$119,900**  
MLS 7079093 Lake Home  
20174 Rudbeck Road  
Brainerd MN 56401



website: [www.AffinityRealEstate.com](http://www.AffinityRealEstate.com) | email: [info@affinityrealestate.com](mailto:info@affinityrealestate.com) | office: 218-237-3333 | fax: 218-237-3377

**Affinity**  
REAL ESTATE INC

**\$119,900**  
MLS 7079093 Lake Home  
20174 Rudbeck Road  
Brainerd MN 56401



website: [www.AffinityRealEstate.com](http://www.AffinityRealEstate.com) | email: [info@affinityrealestate.com](mailto:info@affinityrealestate.com) | office: 218-237-3333 | fax: 218-237-3377



**\$119,900**  
 MLS 7079093 Lake Home  
 20174 Rudbeck Road  
 Brainerd MN 56401